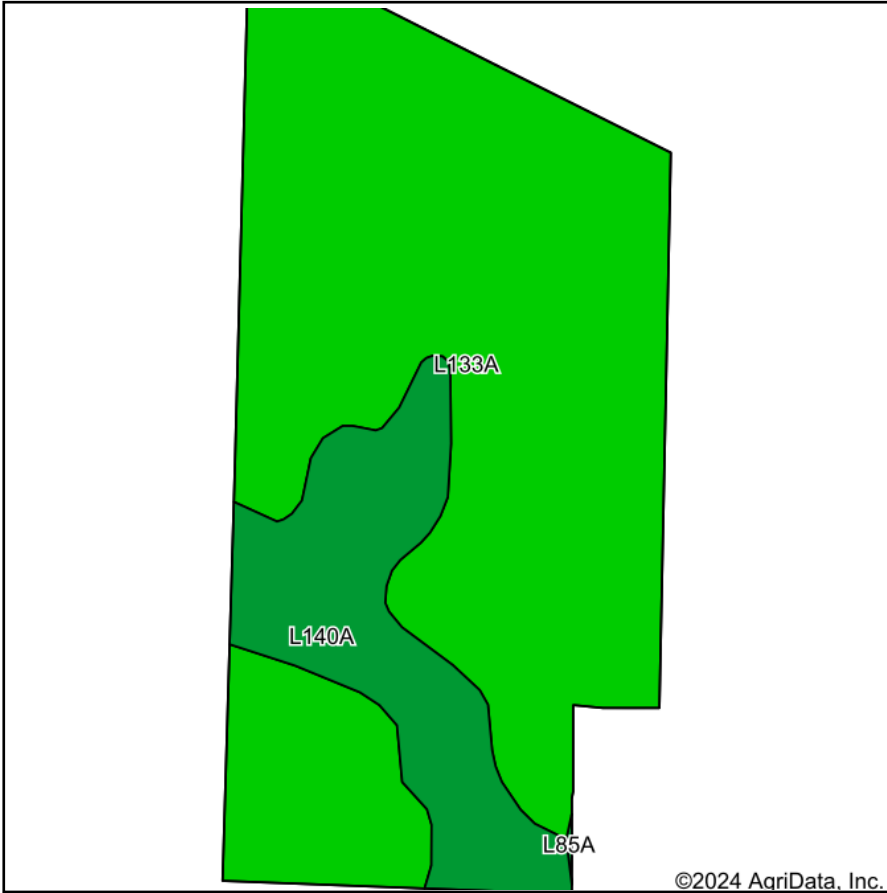
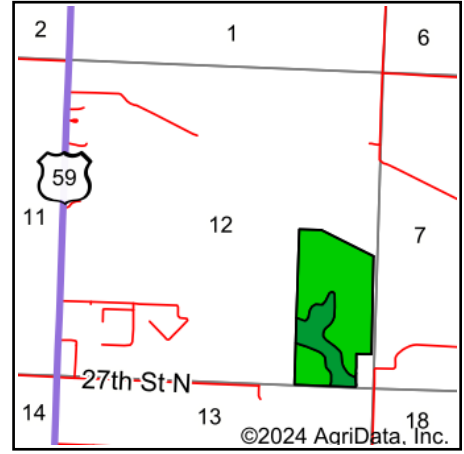


Soils Map



Soils data provided by USDA and NRCS.



State: **Minnesota**
 County: **Nobles**
 Location: **12-102N-40W**
 Township: **Worthington**
 Acres: **68.32**
 Date: **9/24/2024**

& REAL ESTATE, INC
MIDWEST LAND
 712-262-3110 MANAGEMENT



Maps Provided By:

 CUSTOMIZED ONLINE MAPPING

© AgriData, Inc. 2023 www.AgriDataInc.com



Area Symbol: MN105, Soil Area Version: 22

Code	Soil Description	Acres	Percent of field	PI Legend	Non-Irr Class *c	Productivity Index
L133A	Waldorf silty clay loam, 0 to 2 percent slopes	54.88	80.3%		IIw	85
L140A	Ocheda silty clay loam, 1 to 3 percent slopes	13.44	19.7%		Iw	97
Weighted Average					1.80	87.4

*c: Using Capabilities Class Dominant Condition Aggregation Method