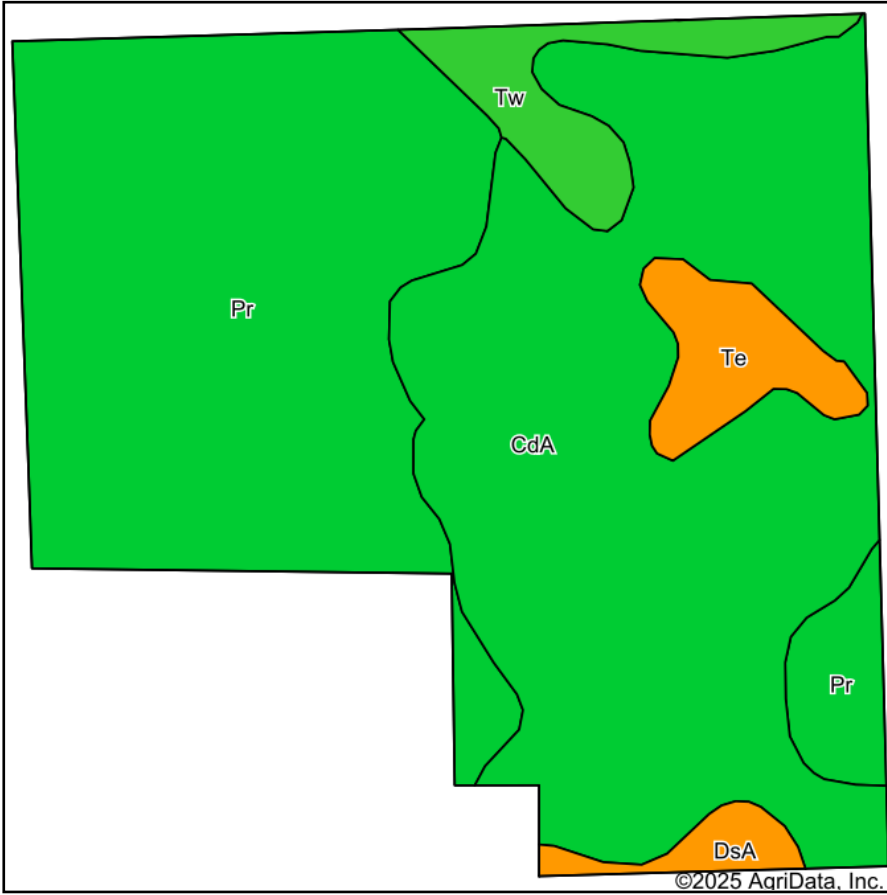
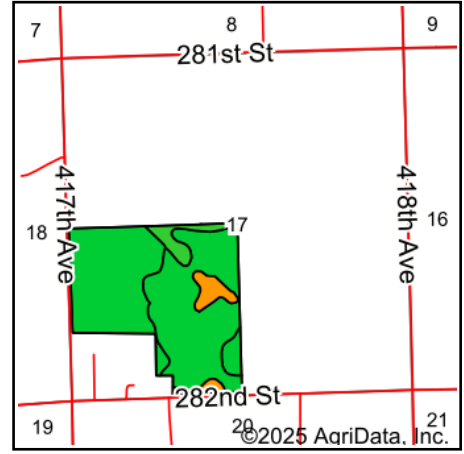


Soils Map



Soils data provided by USDA and NRCS.



State: **South Dakota**
 County: **Hutchinson**
 Location: **17-98N-59W**
 Township: **Sharon**
 Acres: **124.42**
 Date: **2/14/2025**






MIDWEST LAND & REAL ESTATE, INC
 712-262-3110 MANAGEMENT

Maps Provided By:

 CUSTOMIZED ONLINE MAPPING
 © AgriData, Inc. 2023 www.AgriDataInc.com



Area Symbol: SD602, Soil Area Version: 26

Code	Soil Description	Acres	Percent of field	PI Legend	Non-Irr Class *c	Productivity Index
CdA	Clarno-Bonilla loams, 0 to 2 percent slopes	58.59	47.1%		IIc	88
Pr	Prosper-Stickney complex, 0 to 2 percent slopes	53.08	42.7%		IIc	85
Tw	Tetonka and Whitewood silty clay loams	5.92	4.8%		IVw	73
Te	Tetonka silt loam, 0 to 1 percent slopes	4.91	3.9%		IVw	56
DsA	Stickney-Dudley silt loams, 0 to 2 percent slopes	1.92	1.5%		IIIc	54
Weighted Average					2.19	84.2

*c: Using Capabilities Class Dominant Condition Aggregation Method