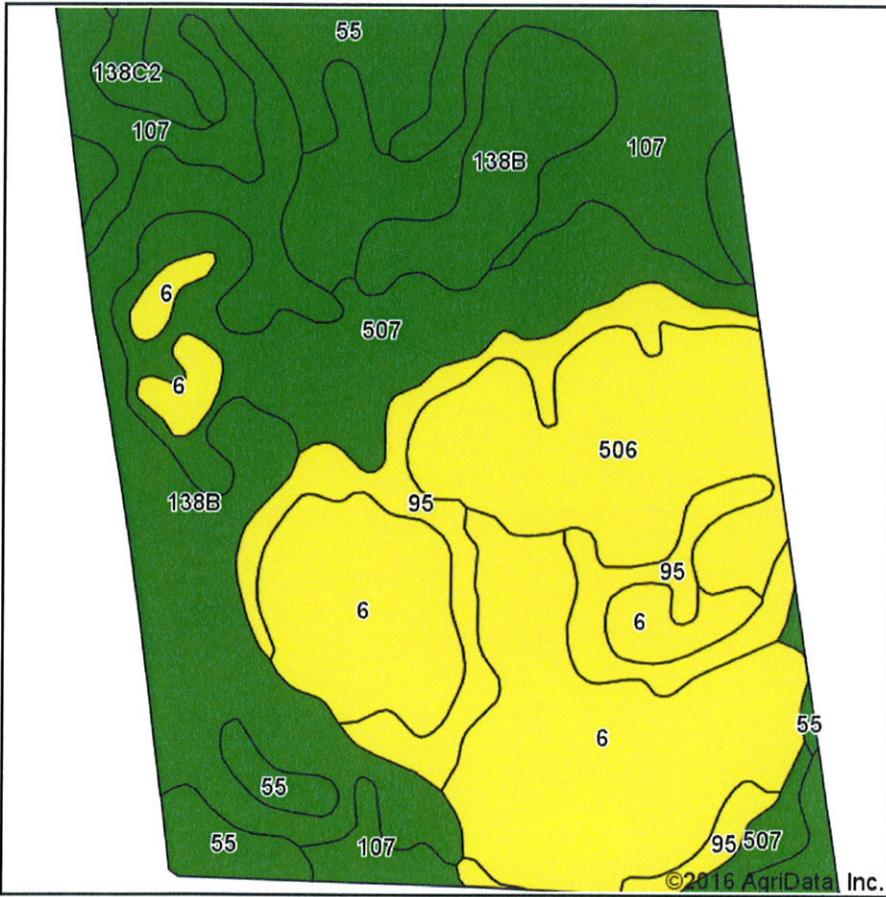
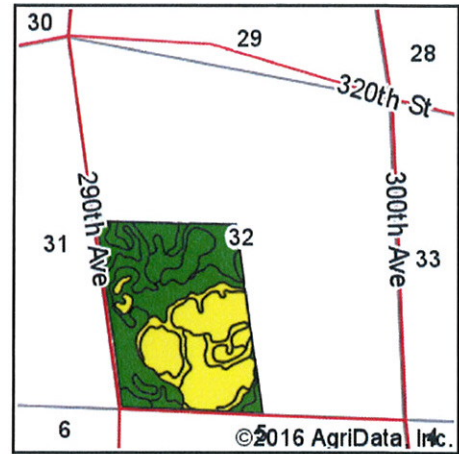


Soils Map



Soils data provided by USDA and NRCS.



State: **Iowa**
 County: **Clay**
 Location: **32-97N-35W**
 Township: **Lake**
 Acres: **200.85**
 Date: **3/9/2016**









MIDWEST LAND
 & REAL ESTATE, INC
 MANAGEMENT
 712-262-3110

Maps Provided By:

 CUSTOMIZED ONLINE MAPPING
 © AgriData, Inc. 2016 www.AgriDataInc.com



Area Symbol: IA041, Soil Area Version: 24

Code	Soil Description	Acres	Percent of field	CSR2 Legend	Non-Irr Class *c	CSR2**	CSR
138B	Clarion loam, 2 to 6 percent slopes	48.18	24.0%		Ile	89	74
6	Okoboji silty clay loam, 0 to 1 percent slopes	44.32	22.1%		IIIw	59	55
107	Webster clay loam, 0 to 2 percent slopes	28.14	14.0%		IIw	86	77
507	Canisteo clay loam, 0 to 2 percent slopes	23.83	11.9%		IIw	84	73
506	Wacousta silty clay loam, depressional, 0 to 1 percent slopes	22.77	11.3%		IIIw	69	69
95	Harps clay loam, 0 to 2 percent slopes	19.63	9.8%		IIw	72	57
55	Nicollet clay loam, 1 to 3 percent slopes	11.62	5.8%		Iw	89	82
138C2	Clarion loam, 6 to 10 percent slopes, moderately eroded	2.36	1.2%		IIIe	83	59
Weighted Average						77.4	68.2

Area Symbol: IA041, Soil Area Version: 24

*IA has updated the CSR values for each county to CSR2.

c: Using Capabilities Class Dominant Condition Aggregation Method

Soils data provided by USDA and NRCS.