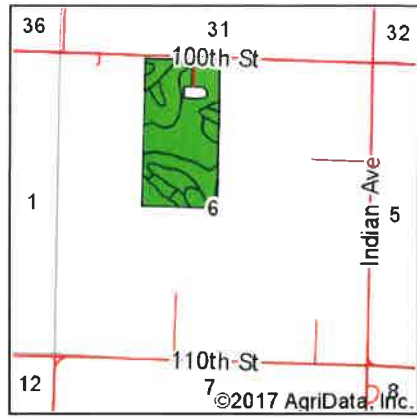


Soils Map

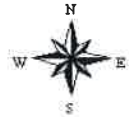


State: **Iowa**
 County: **Ida**
 Location: **6-89N-39W**
 Township: **Galva**
 Acres: **75.5**
 Date: **3/9/2017**

MIDWEST LAND
 REAL ESTATE, INC.
 712-262-3110 MANAGEMENT

Maps Provided By:






 CUSTOMER ONLINE MAPPING
 © AgriData, Inc. 2017 www.AgriDataInc.com



Soils data provided by USDA and NRCS.

©2017 AgriData, Inc.

Area Symbol: IA093, Soil Area Version: 26

Code	Soil Description	Acres	Percent of field	CSR2 Legend	Non-Irr Class *c	CSR2**	CSR
310B	Galva silty clay loam, 2 to 5 percent slopes	33.24	44.0%		Ile	95	73
310C	Galva silty clay loam, 5 to 9 percent slopes	25.62	33.9%		IIle	87	57
91B	Primghar silty clay loam, 1 to 4 percent slopes	7.65	10.1%		Ile	95	81
11B	Colo-Judson silty clay loams, 0 to 5 percent slopes, occasionally flooded	6.81	9.0%		IIw	80	62
310C2	Galva silty clay loam, 5 to 9 percent slopes, eroded	2.18	2.9%		IIle	84	55
Weighted Average						90.6	66.9

**IA has updated the CSR values for each county to CSR2.

*c: Using Capabilities Class Dominant Condition Aggregation Method

Soils data provided by USDA and NRCS.