

## Aerial Map



& REAL ESTATE, INC  
**MIDWEST LAND**  
712-262-3110 MANAGEMENT

Maps Provided By:



© AgriData, Inc. 2014 www.AgriDataInc.com

**14-94N-39W**  
**Obrien County**  
**Iowa**

map center: 42° 57' 38.07, 95° 25' 3.47

scale: 9537

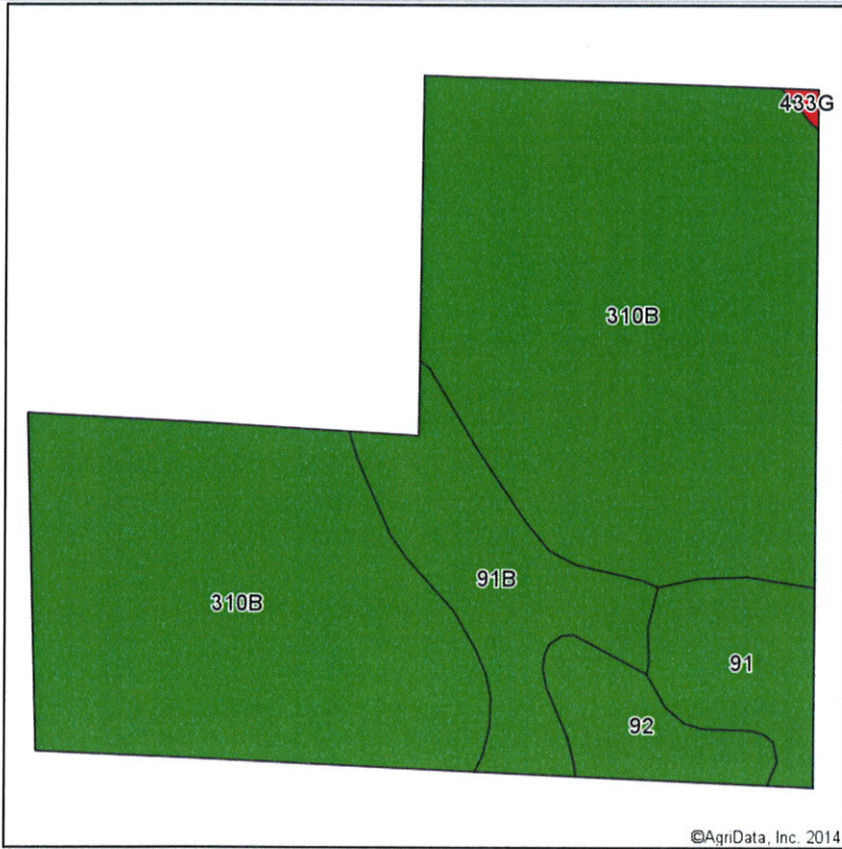


1/19/2015

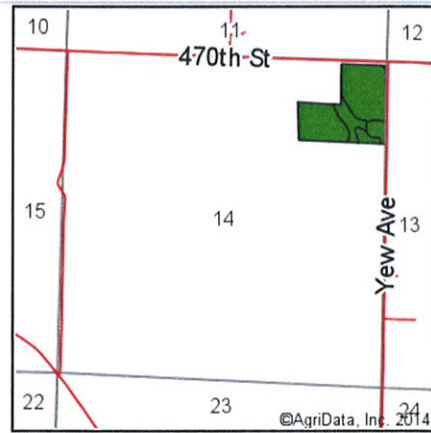
Field borders provided by Farm Service Agency as of 5/21/2008. Aerial photography provided by Aerial Photography Field Office.



# Soils Map-CSR2



Soils data provided by USDA and NRCS.



State: **Iowa**  
 County: **Obrien**  
 Location: **14-94N-39W**  
 Township: **Waterman**  
 Acres: **30.62**  
 Date: **1/19/2015**

**MIDWEST LAND**  
 & REAL ESTATE, INC.  
 712-262-3110 MANAGEMENT



Maps Provided By:



© AgriData, Inc. 2014 www.AgriDataInc.com

Area Symbol: IA141, Soil Area Version: 18

Code	Soil Description	Acres	Percent of field	**CSR2 Legend	Non-Irr Class	CSR2**	CSR
310B	Galva silty clay loam, 2 to 5 percent slopes	23.73	77.5%		Ile	95	70
91B	Primghar silty clay loam, 2 to 4 percent slopes	3.44	11.2%		Ile	94	78
91	Primghar silty clay loam, 0 to 2 percent slopes	1.96	6.4%		I	99	80
92	Marcus silty clay loam, 0 to 2 percent slopes	1.43	4.7%		Ilw	94	75
433G	Storden loam, 25 to 40 percent slopes	0.06	0.2%		Vlle	5	5
Weighted Average						94.9	71.6

\*\*IA has updated the CSR values for each county to CSR2.

Field borders provided by Farm Service Agency as of 5/21/2008. Aerial photography provided by Aerial Photography Field Office.