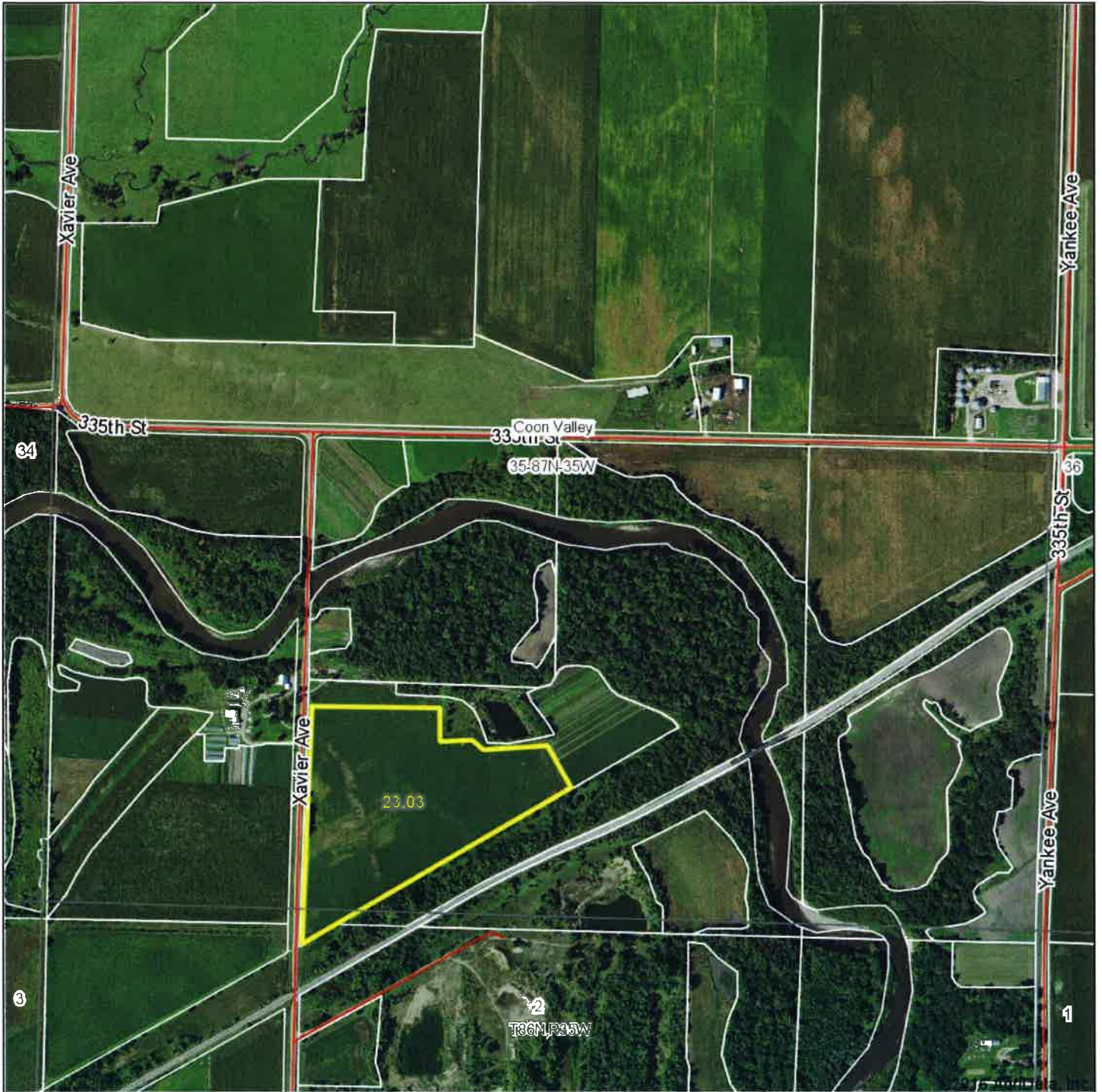


Aerial Map



& REAL ESTATE, INC
MIDWEST LAND
712-262-3110 MANAGEMENT

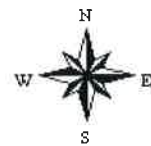
map center: 42° 18' 6.88, 94° 53' 14.92



Maps Provided By:

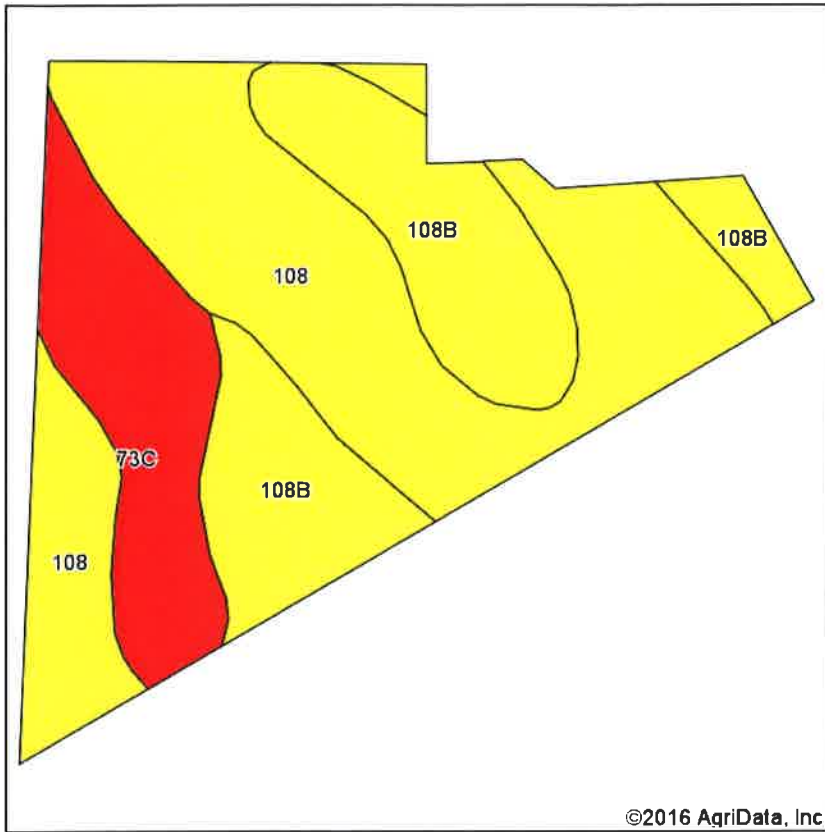
CUSTOMIZED ONLINE MAPPING
© AgriData, Inc. 2016 www.AgriDataInc.com

35-87N-35W
Sac County
Iowa

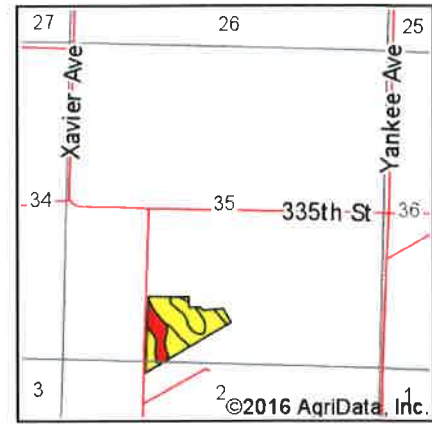


4/28/2016

Soils Map



Soils data provided by USDA and NRCS.



State: **Iowa**
 County: **Sac**
 Location: **35-87N-35W**
 Township: **Coon Valley**
 Acres: **23.03**
 Date: **4/28/2016**




MIDWEST LAND
 & REAL ESTATE, INC.
 MANAGEMENT
 712-262-3110

Maps Provided By:

 CUSTOMIZED ONLINE MAPPING
 © AgriData, Inc. 2016 www.AgriDataInc.com



Area Symbol: IA161, Soil Area Version: 21

Code	Soil Description	Acres	Percent of field	CSR2 Legend	Non-Irr Class *c	CSR2**	CSR
108	Wadena loam, 24 to 32 inches to sand and gravel, 0 to 2 percent slopes	11.68	50.7%		Ils	60	54
108B	Wadena loam, 24 to 32 inches to sand and gravel, 2 to 5 percent slopes	7.16	31.1%		Ile	55	49
73C	Salida gravelly loamy sand, 5 to 9 percent slopes	4.19	18.2%		IIIs	33	6
Weighted Average						53.5	43.7

Area Symbol: IA161, Soil Area Version: 21

**IA has updated the CSR values for each county to CSR2.

*c: Using Capabilities Class Dominant Condition Aggregation Method

Soils data provided by USDA and NRCS