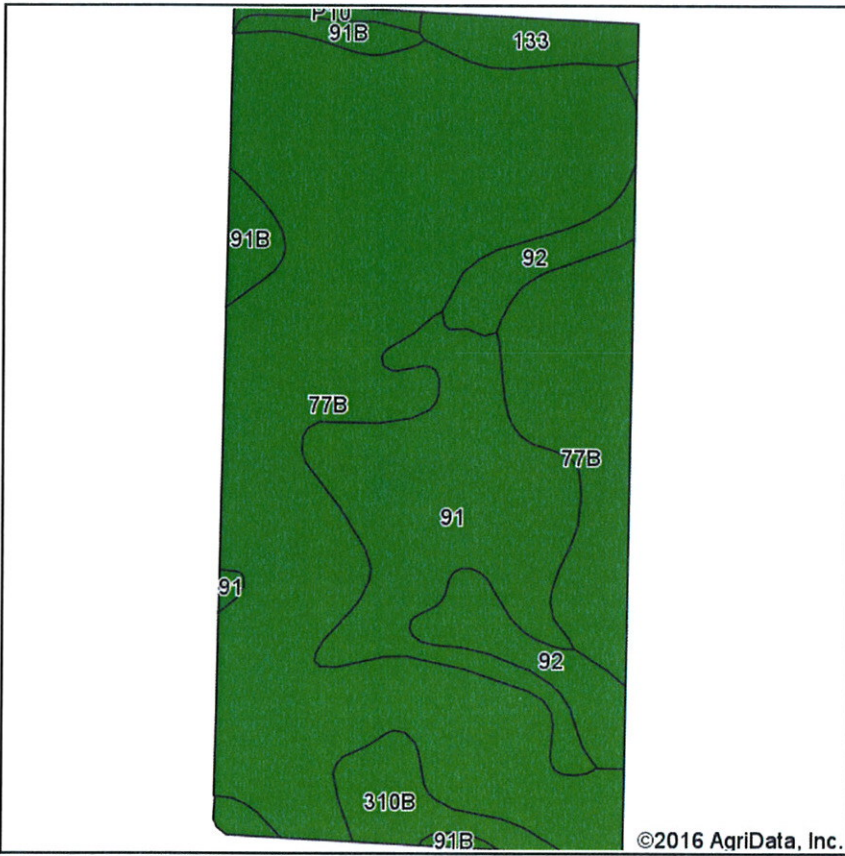
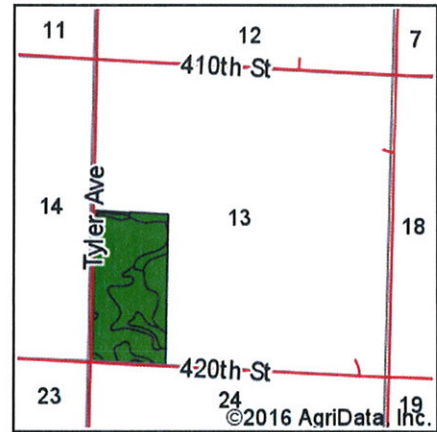


Soils Map



Soils data provided by USDA and NRCS.



State: Iowa
 County: Obrien
 Location: 13-95N-40W
 Township: Highland
 Acres: 77
 Date: 3/8/2016

MIDWEST LAND
 & REAL ESTATE, INC.
 712-282-3110 MANAGEMENT

Maps Provided By:

 CUSTOMIZED ONLINE MAPPING
 © AgriData, Inc. 2016 www.AgriDataInc.com



Area Symbol: IA141, Soil Area Version: 19							
Code	Soil Description	Acres	Percent of field	CSR2 Legend	Non-Irr Class *c	CSR2**	CSR
77B	Sac silty clay loam, 2 to 5 percent slopes	50.26	65.3%		lle	91	68
91	Primghar silty clay loam, 0 to 2 percent slopes	13.52	17.6%		lw	99	80
92	Marcus silty clay loam, 0 to 2 percent slopes	5.22	6.8%		llw	94	75
310B	Galva silty clay loam, 2 to 5 percent slopes	3.02	3.9%		lle	95	70
91B	Primghar silty clay loam, 2 to 4 percent slopes	2.25	2.9%		lle	94	78
133	Colo silty clay loam, deep loess, 0 to 2 percent slopes, occasionally flooded	2.14	2.8%		llw	78	73
P10	Afton silty clay loam, Sheldon creek formation, 0 to 2 percent slopes, occasionally flooded	0.59	0.8%		llw	82	
Weighted Average						92.4	*-

Area Symbol: IA141, Soil Area Version: 19

**IA has updated the CSR values for each county to CSR2.

*- CSR weighted average cannot be calculated on the current soils data, use prior data version for csr values.

*c: Using Capabilities Class Dominant Condition Aggregation Method

Soils data provided by USDA and NRCS.