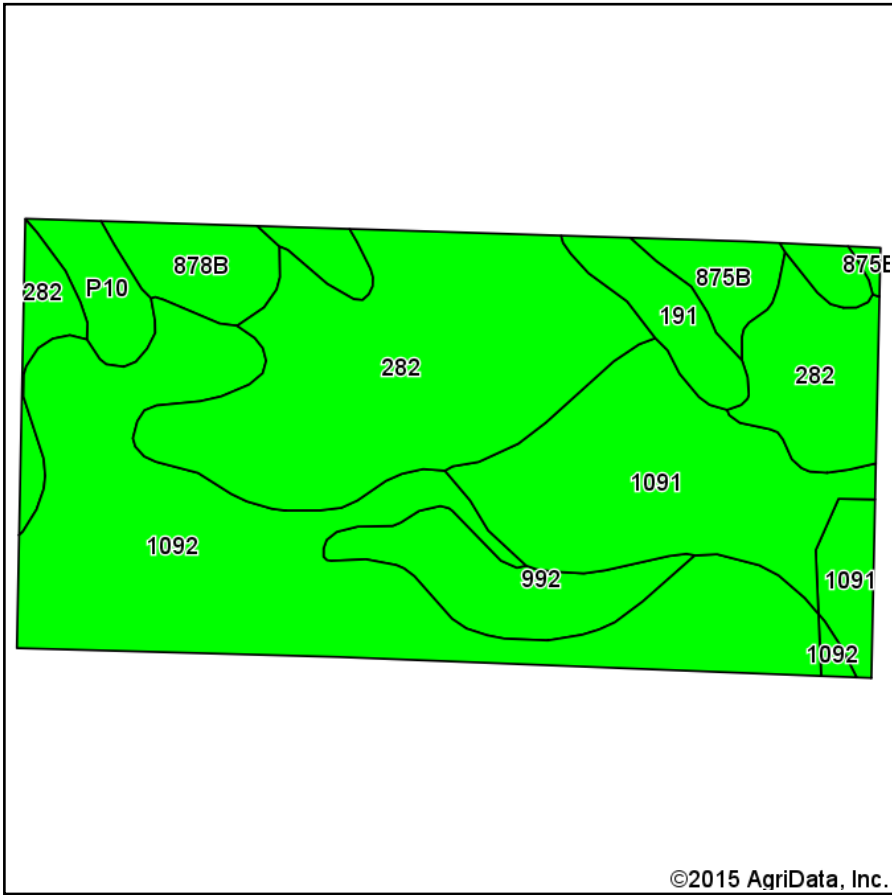
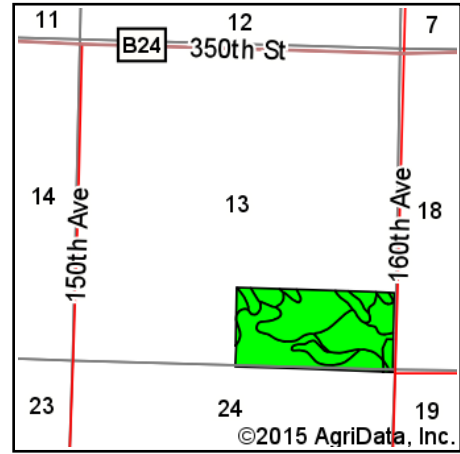


Soils Map-CSR2



Soils data provided by USDA and NRCS.



State: **Iowa**
 County: **Clay**
 Location: **13-96N-38W**
 Township: **Lone Tree**
 Acres: **76.64**
 Date: **12/1/2015**

MIDWEST LAND
 & REAL ESTATE, INC
 712-262-3110 MANAGEMENT

Maps Provided By:



Area Symbol: IA041, Soil Area Version: 24

Code	Soil Description	Acres	Percent of field	CSR2 Legend	Non-Irr Class *c	CSR2**	CSR
1092	Gillett Grove silty clay loam, 0 to 2 percent slopes	24.12	31.5%		IIw	94	78
282	Ransom silty clay loam, 1 to 3 percent slopes	23.92	31.2%		Iw	95	81
1091	McCreath silty clay loam, 0 to 2 percent slopes	13.40	17.5%		Iw	98	83
992	Gillett Grove silty clay loam, depressional, 0 to 1 percent slopes	4.42	5.8%		IIIw	77	58
191	Rushmore silty clay loam, 0 to 2 percent slopes	3.21	4.2%		IIw	95	76
P10	Afton silty clay loam, Sheldon creek formation, 0 to 2 percent slopes, occasionally flooded	2.89	3.8%		IIw	82	
878B	Ocheyedan loam, 2 to 5 percent slopes	2.70	3.5%		IIe	91	63
875B	Roine fine sandy loam, 2 to 5 percent slopes	1.98	2.6%		IIIe	81	41
Weighted Average						93.2	*-

Area Symbol: IA041, Soil Area Version: 24

**IA has updated the CSR values for each county to CSR2.

*- CSR weighted average cannot be calculated on the current soils data, use prior data version for csr values.

*c: Using Capabilities Class Dominant Condition Aggregation Method

Soils data provided by USDA and NRCS.