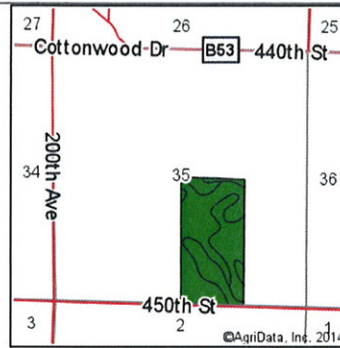
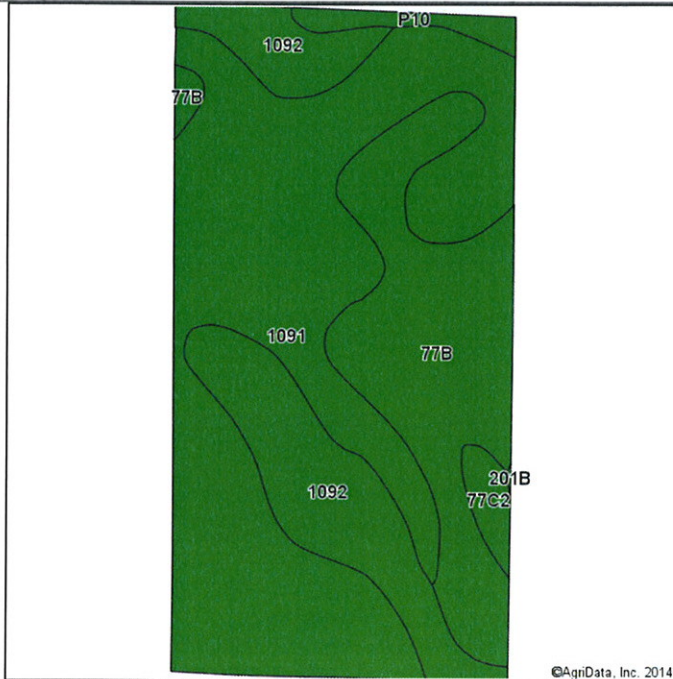


Soils Map-CSR2



Soils Version
latest

State: **Iowa**
 County: **Clay**
 Location: **35-95N-37W**
 Township: **Lincoln**
 Acres: **78.5**
 Date: **7/22/2014**






MIDWEST LAND
712-282-3110
 & REAL ESTATE, INC.
 MANAGEMENT



Maps Provided By:

 CUSTOMIZED ONLINE MAPPING
 © AgriData, Inc. 2014 www.AgriDataInc.com

Soils data provided by USDA and NRCS.

Area Symbol: IA041, Soil Area Version: 20							
Code	Soil Description	Acres	Percent of field	**CSR2 Legend	Non-Irr Class	CSR2**	CSR
1091	McCreath silty clay loam, 0 to 2 percent slopes	42.14	53.7%		I	98	83
77B	Sac silty clay loam, 2 to 5 percent slopes	19.21	24.5%		Ile	95	71
1092	Gillett Grove silty clay loam, 0 to 2 percent slopes	14.21	18.1%		IIw	94	78
P10	Afton silty clay loam, Sheldon creek formation, 0 to 2 percent slopes, occasionally flooded	1.54	2.0%		IIw	82	
77C2	Sac silty clay loam, 5 to 9 percent slopes, moderately eroded	1.40	1.8%		IIIe	86	53
Weighted Average						96	*-

**IA has updated the CSR values for each county to CSR2.

*- CSR weighted average cannot be calculated on the current soils data, use prior data version for csr values.

Field borders provided by Farm Service Agency as of 5/21/2008. Aerial photography provided by Aerial Photography Field Office.