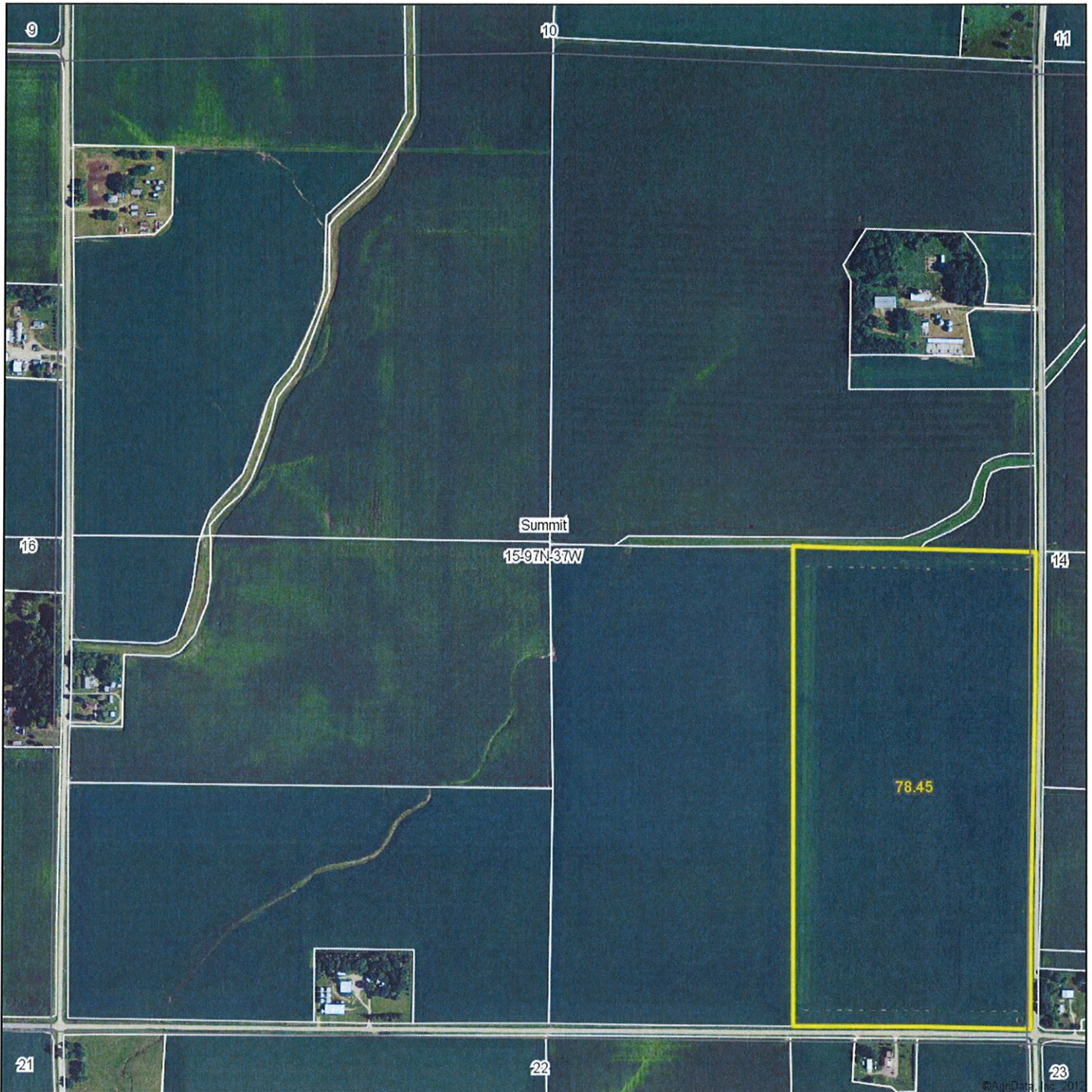


# Aerial Map



& REAL ESTATE, INC.  
**MIDWEST LAND**  
712-262-3110 MANAGEMENT

Maps provided by:



©AgriData, Inc. 2012  
[www.AgriDataInc.com](http://www.AgriDataInc.com)

**15-97N-37W**  
**Clay County**  
**Iowa**

map center: 43° 13' 13.12, 95° 12' 0.85  
scale: 8973

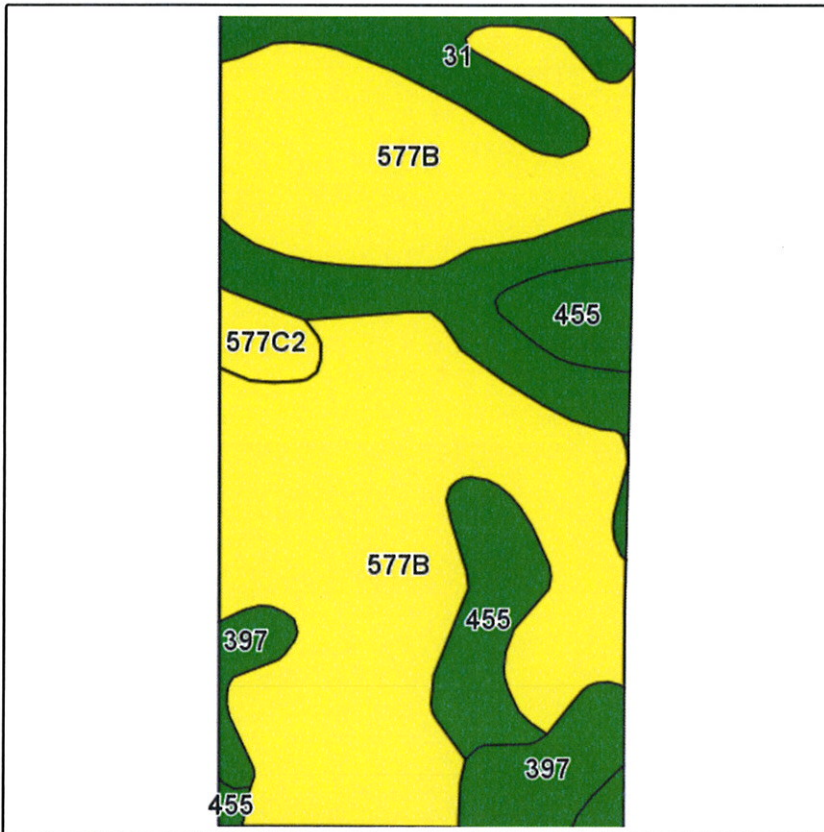


7/2/2012

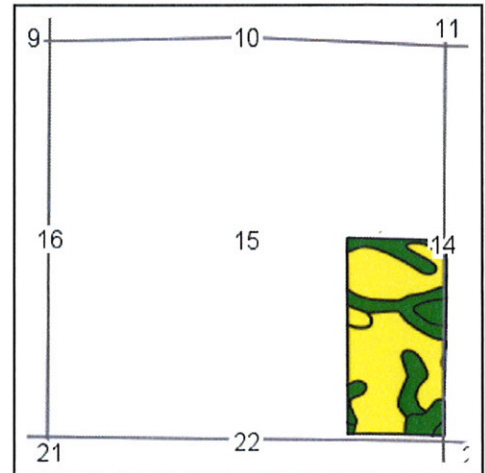
Field borders provided by Farm Service Agency as of 5/21/2008. Aerial photography provided by Aerial Photography Field Office.



## Soils Map



Field borders provided by Farm Service Agency as of 5/21/2008.  
Soils data provided by USDA and NRCS.



State: **Iowa**  
County: **Clay**  
Location: **15-97N-37W**  
Township: **Summit**  
Acres: **78.5**  
Date: **7/2/2012**

**MIDWEST LAND** & REAL ESTATE, INC.  
712-262-3110 MANAGEMENT



Maps provided by:



©AgriData, Inc 2012  
www.AgriDataInc.com

Code	Soil Description	Acres	Percent of field	CSR Legend	Non-Irr Class	CSR	Corn	Soybeans
577B	Everly clay loam, 2 to 5 percent slopes	50.4	64.2%		Ile	68	177	41
31	Afton silty clay loam, 0 to 2 percent slopes	13.2	16.8%		Ilw	75	186	51
455	Wilmonton clay loam, 1 to 3 percent slopes	8.2	10.4%		I	74	185	41
397	Letri clay loam, 0 to 2 percent slopes	5	6.4%		Ilw	72	182	44
577C2	Everly clay loam, 5 to 9 percent slopes, moderately eroded	1.7	2.1%		Ille	51	154	37
Weighted Average						69.6	179	42.7