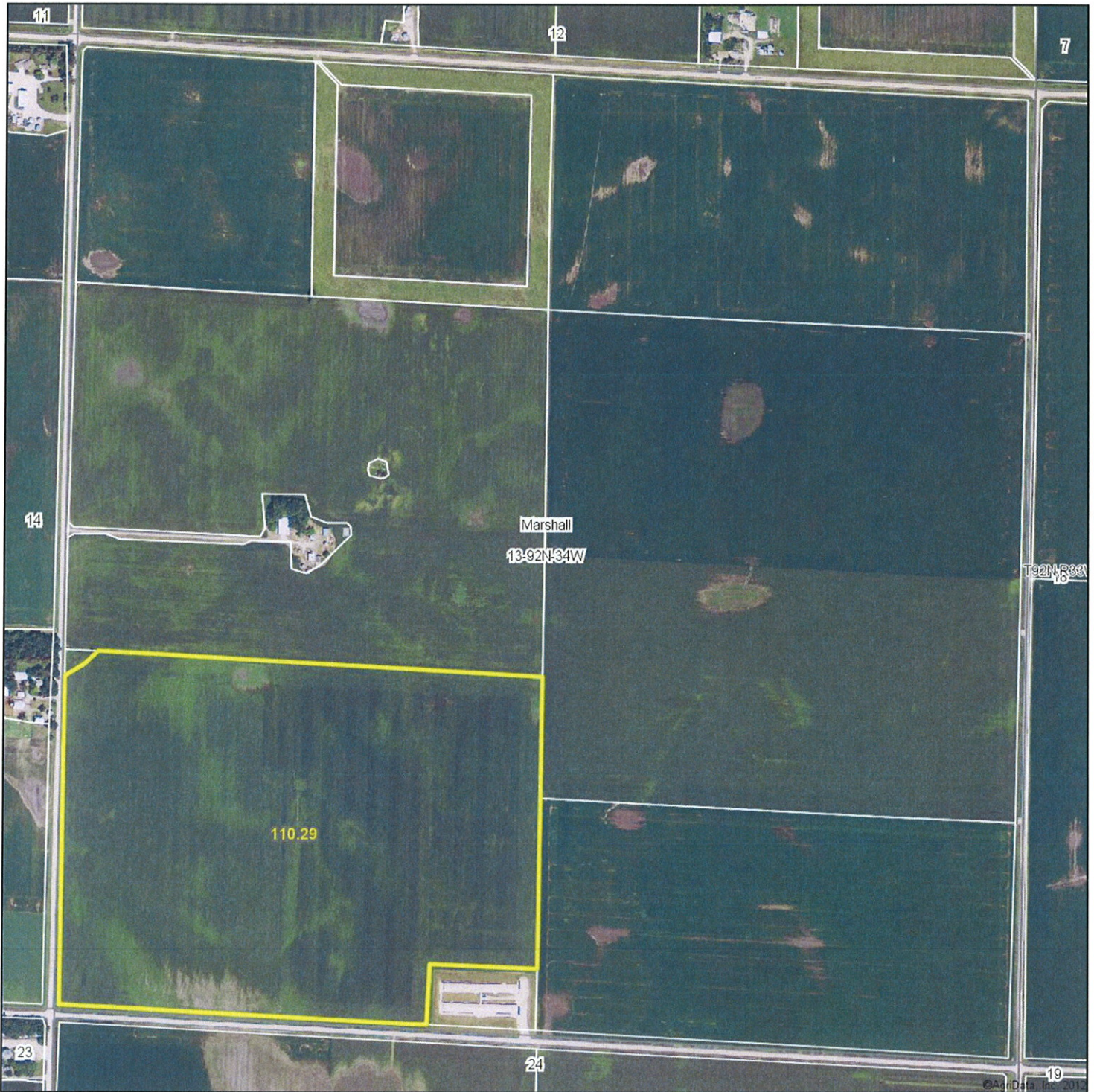


# Aerial Map



**MIDWEST LAND**  
MANAGEMENT  
712-282-3110

Maps provided by:



©AgriData, Inc. 2012  
www.AgrDataInc.com

**13-92N-34W**  
**Pocahontas County**  
**Iowa**

map center: 42° 47' 0.25, 94° 48' 23.91

scale: 8937

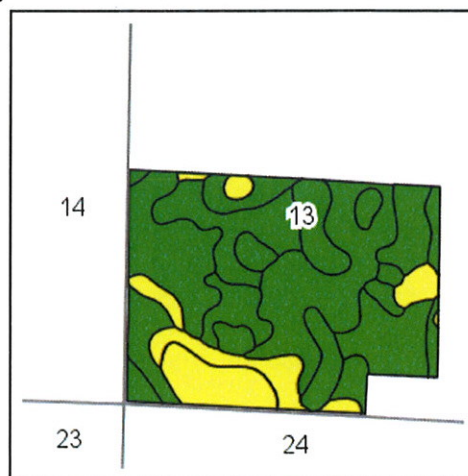
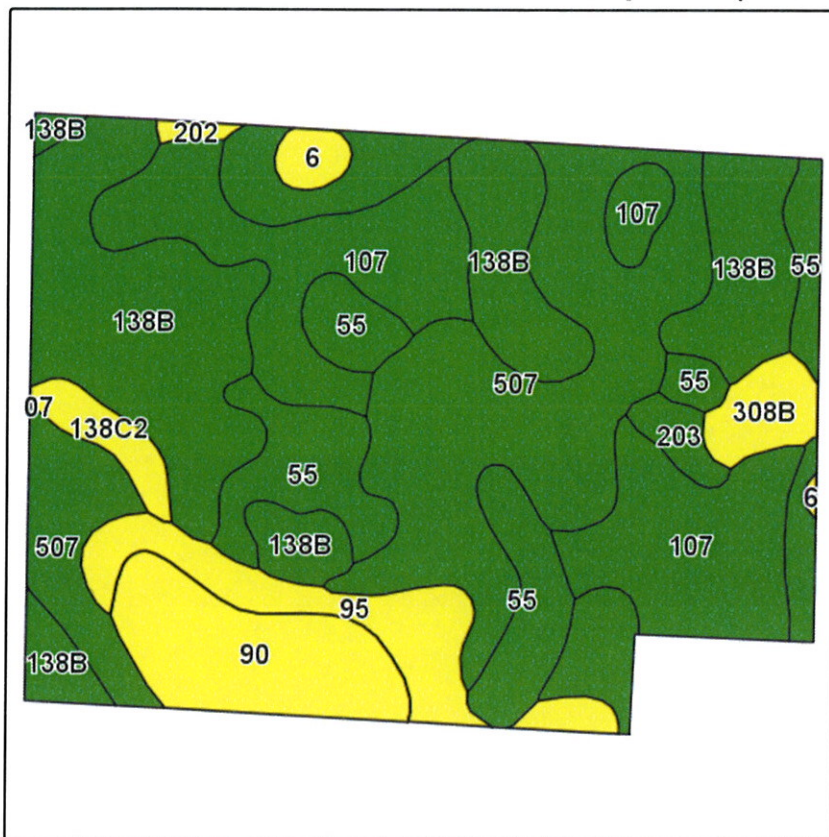


2/19/2013

Field borders provided by Farm Service Agency as of 5/21/2008. Aerial photography provided by Aerial Photography Field Office.



# Soils Map-CSR(as of 1/21/12)



State: Iowa  
 County: Pocahontas  
 Location: 13-92N-34W  
 Township: Marshall  
 Acres: 110.6  
 Date: 3/28/2013

**MIDWEST LAND**  
 & REAL ESTATE, INC.  
 712-262-3110 MANAGEMENT



Maps provided by:



Field borders provided by Farm Service Agency as of 5/21/2008.  
 Soils data provided by USDA and NRCS.

Code	Soil Description	Acres	Percent of field	CSR Legend	Non-Irr Class	CSR*	Corn	Soybeans
507	Canisteo clay loam, 0 to 2 percent slopes	31.2	28.3%		IIw	76	191	44
138B	Clarion loam, 2 to 5 percent slopes	26.7	24.1%		Ile	78	193	43
107	Webster clay loam, 0 to 2 percent slopes	20.2	18.2%		IIw	81	197	44
55	Nicollet clay loam, 1 to 3 percent slopes	11.9	10.7%		I	86	204	48
90	Okoboji mucky silty clay loam, 0 to 1 percent slopes	8.4	7.6%		IIIw	57	165	36
95	Harps clay loam, 0 to 2 percent slopes	5.6	5.1%		IIw	60	169	38
308B	Wadena loam, 32 to 40 inches to sand and gravel, 2 to 5 percent	2.2	2.0%		Ile	63	173	35
138C2	Clarion loam, 5 to 9 percent slopes, moderately eroded	1.8	1.6%		IIIe	62	172	41
203	Cylinder clay loam, 32 to 40 inches to sand and gravel, 0 to 2 percent slopes	1.2	1.0%		Ils	74	188	42
6	Okoboji silty clay loam, 0 to 1 percent slopes	1	0.9%		IIIw	55	162	35
202	Cylinder clay loam, 24 to 32 inches to sand and gravel, 0 to 2 percent slopes	0.4	0.3%		Ils	63	173	36
Weighted Average						75.3	189.5	42.8

Note: ALL soils information on this page is dated 1/21/2012

\*CSR ratings will be available for a limited time to aid in the transition to CSR2.