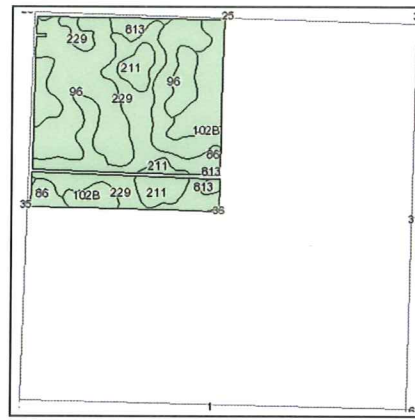
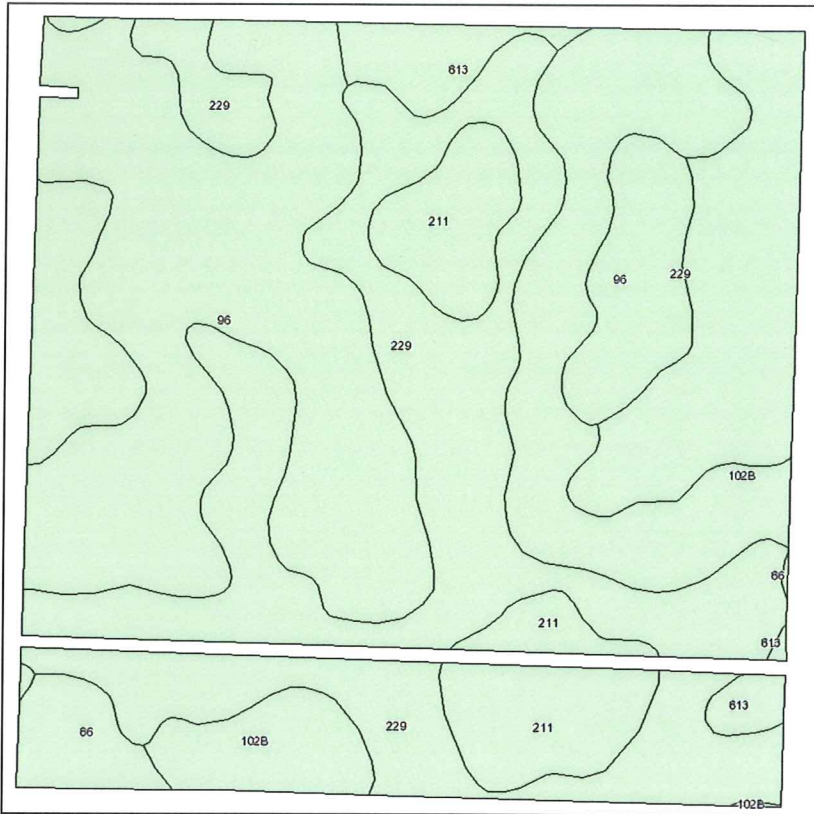


Soils Map



State: **Minnesota**
 County: **Jackson**
 Location: **036-102N-037W**
 Township: **Rost**
 Acres: **151.5**
 Date: **3/3/2010**



Maps provided by:
surety

©AgriData, Inc 2008
 www.AgriDataInc.com

Fsa borders provided by the Farm Service Agency as of May 23, 2008.
 Soils data provided by USDA and NRCS.

Code	Soil Description	Acres	Percent of field	Non-Irr Class	Productivity Index	Bromegrass alfalfa hay	Corn	Oats	Soybeans	Spring wheat	
229	Waldorf silty clay	75	64.7	42.7%	Ilw	85	4.8	161	84	47	55
96	Collinwood silty clay	80	45.3	29.9%	Ile	86	4.9	163	85	47	55
102B	Clarion loam, 2 to 6 percent slopes	21.9	88	14.4%	Ile	95	5.6	180	89	52	58
211	Lura silty clay	65	12.1	8.0%	Illw	81	3.9	153	78	45	50
813	Spicer-Lura complex	65	4.3	2.9%	Ilw	87	4.9	164	80	48	50
86	Canisteo clay loam	77	3.2	2.1%	Ilw	93	4.8	176	84	51	55
Weighted Average						86.6	4.9	164.1	84.4	47.7	54.9

CER 77.3