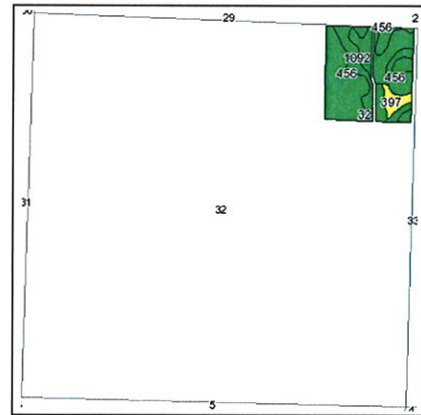
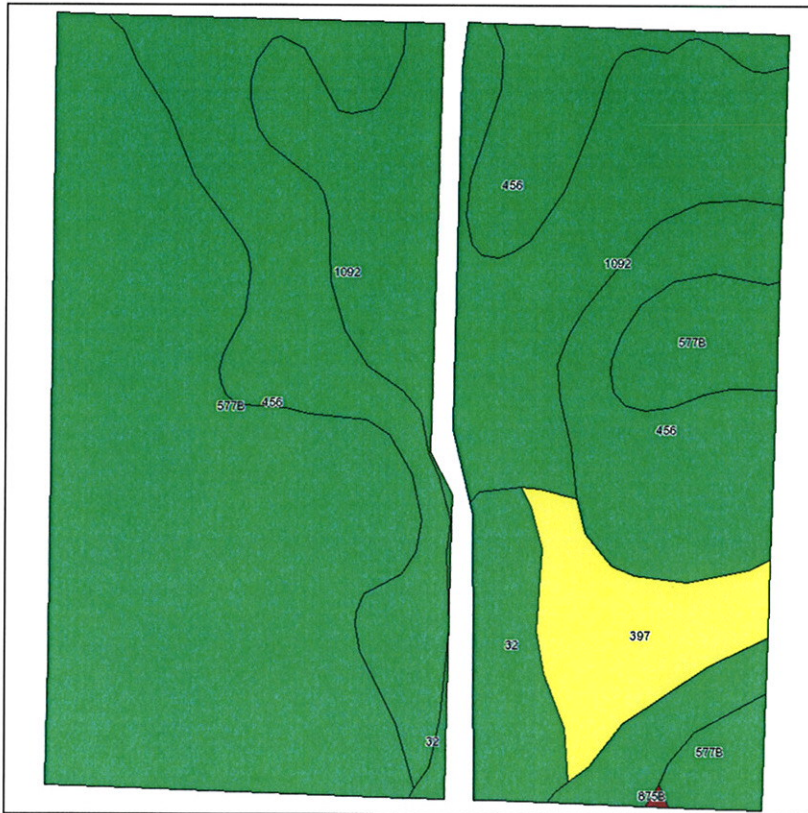


### Soils Map








State: **Iowa**  
 County: **Dickinson**  
 Location: **032-098N-037W**  
 Township: **Okoboji**  
 Acres: **35.1**  
 Date: **3/18/2011**



Maps provided by:  


©AgriData, Inc 2008  
 www.AgriDataInc.com

Fsa borders provided by the Farm Service Agency as of May 23, 2008.  
 Soils data provided by USDA and NRCS.

Code	Soil Description	Acres	Percent of field	CSR Legend	Non-Irr Class	CSR	Corn	Soybeans
577B	Everly clay loam, 2 to 5 percent slopes	13.9	39.6%		Ile	73	183	64
456	Wilmington silty clay loam, 1 to 3 percent slopes	10.4	29.5%		I	73	183	64
1092	Gillett Grove silty clay loam, 0 to 2 percent slopes	7.1	20.2%		Ilw	79	191	67
397	Letri silty clay loam, 0 to 1 percent slopes	2.1	6.1%		Ilw	72	182	64
32	Spicer silty clay loam, MLRA 107, 0 to 2 percent slopes	1.6	4.5%		Ilw	77	188	66
<b>Weighted Average</b>						<b>74.3</b>	<b>184.6</b>	<b>64.6</b>