

Midwest Land Management

Acreage

# FOR SALE

1358 Tulip Avenue • Lorimor, Iowa



**Property Location:** 2.5 miles south of Lorimor, Iowa on Highway 169, 1.6 miles west on 143rd Street and .8 miles north on Tulip Avenue.

**Broker's Note:** Embrace the beauty of country living with this inviting, 5 bedroom, 1 bathroom farmhouse nestled on 1.11 acres of scenic Union County countryside. Built in 1915, this home features timeless character with its original hardwood floors and intricate woodwork. Updates are plentiful, including new windows on the main floor, an updated kitchen, a new roof and modernized electrical wiring, ensuring both historical charm and modern convenience. The property also features a spacious 32' x 40' detached heated garage with a restroom offering ample space for vehicles, hobbies, or storage. Whether you are looking to relax and enjoy the peaceful rural setting or create your own personal retreat, this farm house offers endless possibilities. With beautiful views of the countryside, you can make this property your own slice of paradise.



**Don't miss the opportunity to own a piece of Union County history with all the comforts of modern living. Schedule your private showing today!**

**Price: \$230,000**

**For A Private Showing Contact Tom Bradley 515-202-7687.**

**Midwest Land Management and Real Estate, Inc.**

**Ben Hollesen ~ 712-253-5779 • Travis Johnson ~ 712-330-5345**

**Shane Brant ~ 712-301-4664 • Zach Anderson ~ 712-298-1606**

**Jerod Olson ~ 712-240-2800 • Jason Collins ~ 712-301-3858**

**Tom Bradley ~ 515-202-7687**

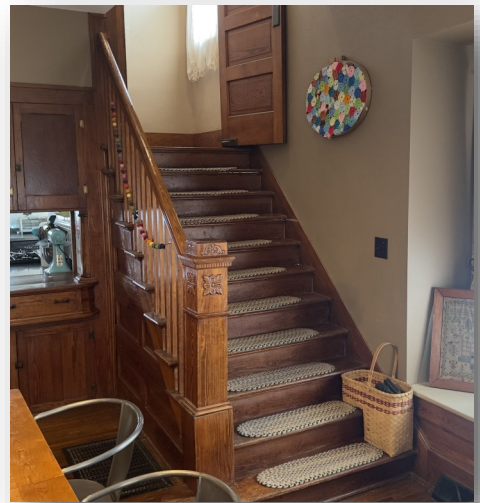
**[www.midwestlandmanagement.com](http://www.midwestlandmanagement.com)**

**MIDWEST LAND**  
MANAGEMENT & REAL ESTATE, INC

Property information provided was obtained from sources deemed reliable, but the Broker or Seller makes no guarantees as to its accuracy. All prospective buyers are urged to fully inspect the property, its conditions and to rely on their own conclusions. All sketches, dimensions and acreage figures in this information are approximate or "more or less". Average CSR information was obtained from Surety/Agri Data. Midwest Land Management and Real Estate, Inc., affiliated licensees represent the Sellers exclusively.



# 1358 Tulip Avenue • Lorimor, Iowa



For additional photos  
visit our website,  
[midwestlandmanagement.com](http://midwestlandmanagement.com)



**For A Private Showing Contact Tom Bradley 515-202-7687.**

**Midwest Land Management and Real Estate, Inc.**  
2506 11th Avenue SW. • PO Box 909  
Spencer, IA 51301  
712-262-3110 • 800-952-2974  
[www.midwestlandmanagement.com](http://www.midwestlandmanagement.com)

& REAL ESTATE, INC  
**MIDWEST LAND**  
MANAGEMENT

Property information provided was obtained from sources deemed reliable, but the Broker or Seller makes no guarantees as to its accuracy. All prospective buyers are urged to fully inspect the property, its conditions and to rely on their own conclusions. All sketches, dimensions and acreage figures in this information are approximate or "more or less".