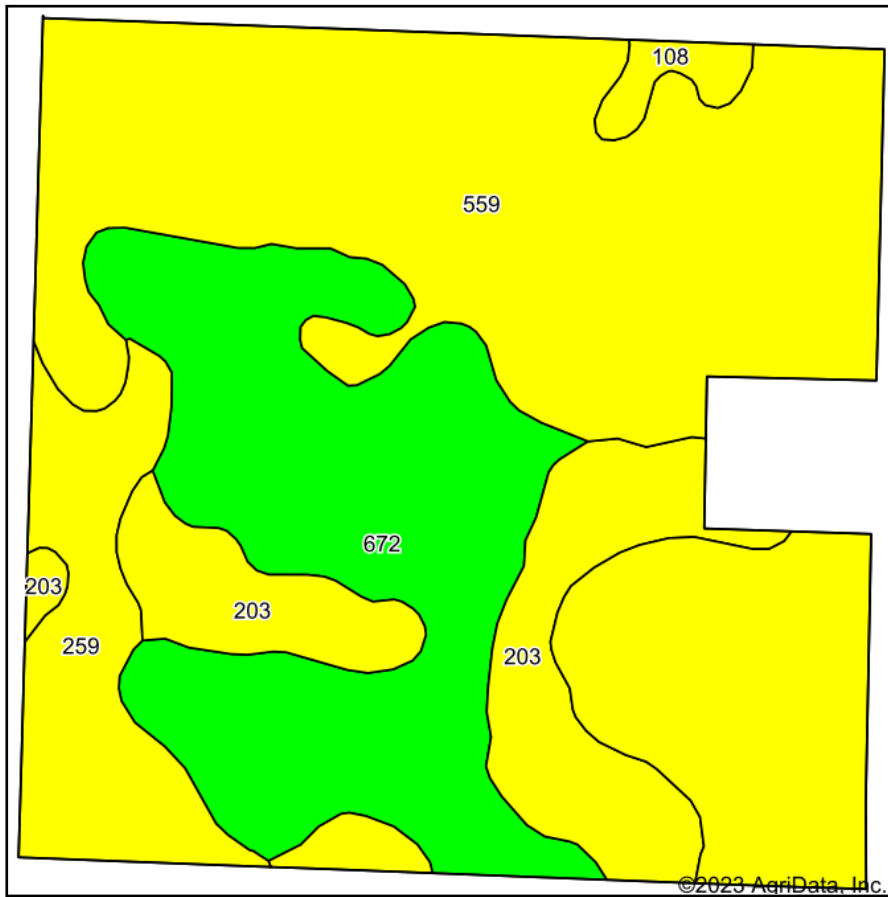
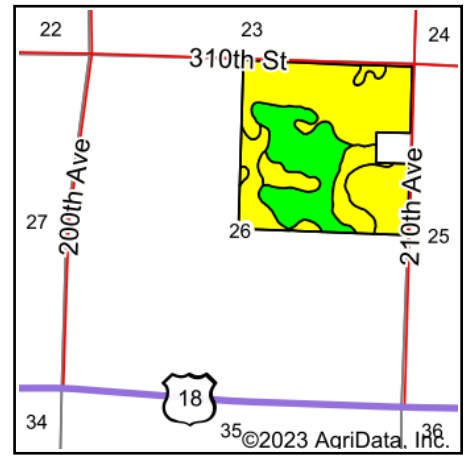


# Soils Map



Soils data provided by USDA and NRCS.



State: **Iowa**  
 County: **Clay**  
 Location: **26-97N-37W**  
 Township: **Summit**  
 Acres: **150.25**  
 Date: **10/3/2023**

**MIDWEST LAND** & REAL ESTATE, INC.  
 712-262-3110 MANAGEMENT  
 Maps Provided By:  
**surety**  
 CUSTOMIZED ONLINE MAPPING  
 © AgriData, Inc. 2023 www.AgriDataInc.com



Area Symbol: IA041, Soil Area Version: 32								
Code	Soil Description	Acres	Percent of field	CSR2 Legend	Non-Irr Class *c	Irr Class *c	CSR2**	CSR
559	Talcot clay loam, 32 to 40 inches to sand and gravel, 0 to 2 percent slopes	75.25	50.1%		IIw		52	65
672	May City sandy clay loam, 0 to 2 percent slopes	40.08	26.7%		IVs	IIIs	74	38
203	Cylinder loam, 0 to 2 percent slopes	19.85	13.2%		IIIs		58	
259	Biscay clay loam, 0 to 2 percent slopes	13.28	8.8%		IIw		52	70
108	Wadena loam, 0 to 2 percent slopes	1.79	1.2%		IIIs		56	52
<b>Weighted Average</b>					<b>2.53</b>	<b>*-</b>	<b>58.7</b>	<b>*-</b>

\*\*IA has updated the CSR values for each county to CSR2.

\*- CSR weighted average cannot be calculated on the current soils data, use prior data version for csr values.

\*c: Using Capabilities Class Dominant Condition Aggregation Method

\*- Irr Class weighted average cannot be calculated on the current soils data due to missing data.

Soils data provided by USDA and NRCS.