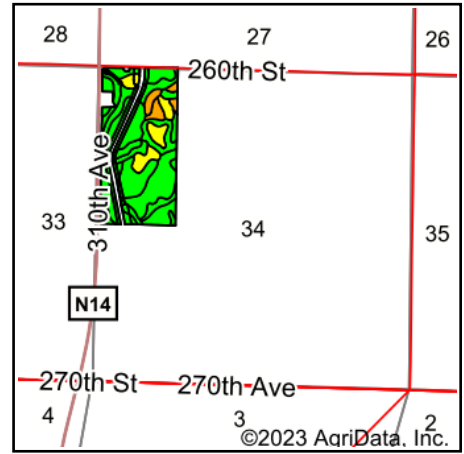


Soils Map



Soils data provided by USDA and NRCS.



State: **Iowa**
County: **Dickinson**
Location: **34-98N-35W**
Township: **Lloyd**
Acres: **70.42**
Date: **7/13/2023**

MIDWEST LAND & REAL ESTATE, INC.
712-262-3110 **MANAGEMENT**

Maps Provided By:



Area Symbol: IA059, Soil Area Version: 32

Code	Soil Description	Acres	Percent of field	CSR2 Legend	CSR2**	CSR
138B	Clarion loam, 2 to 6 percent slopes	17.86	25.4%	Very High	89	73
733	Calco silty clay loam, 0 to 2 percent slopes, occasionally flooded	16.72	23.7%	Very High	78	64
107	Webster clay loam, 0 to 2 percent slopes	6.45	9.2%	Very High	86	70
135	Coland clay loam, 0 to 2 percent slopes, occasionally flooded	6.43	9.1%	Very High	76	58
507	Canisteo clay loam, 0 to 2 percent slopes	6.37	9.0%	Very High	84	71
6	Okoboji silty clay loam, 0 to 1 percent slopes	4.54	6.4%	High	59	43
55	Nicollet clay loam, 1 to 3 percent slopes	2.62	3.7%	Very High	89	73
34B	Estherville sandy loam, 2 to 6 percent slopes	2.05	2.9%	High	27	15
34C2	Estherville sandy loam, 5 to 9 percent slopes, moderately eroded	1.87	2.7%	High	27	15
259	Biscay clay loam, 0 to 2 percent slopes	1.41	2.0%	High	52	41
635C2	Belview-Storden complex, 5 to 9 percent slopes, moderately eroded	1.40	2.0%	Very High	66	18
835D2	Omsrud-Storden complex, 10 to 16 percent slopes, moderately eroded	1.38	2.0%	High	53	35
1032	Spicer silty clay loam, 0 to 2 percent slopes	1.32	1.9%	Very High	91	74
Weighted Average					77.2	61.4

**IA has updated the CSR values for each county to CSR2.

Soils data provided by USDA and NRCS.