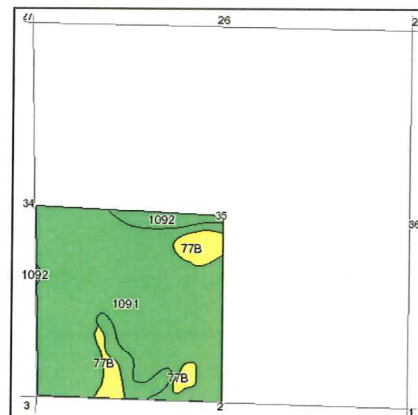
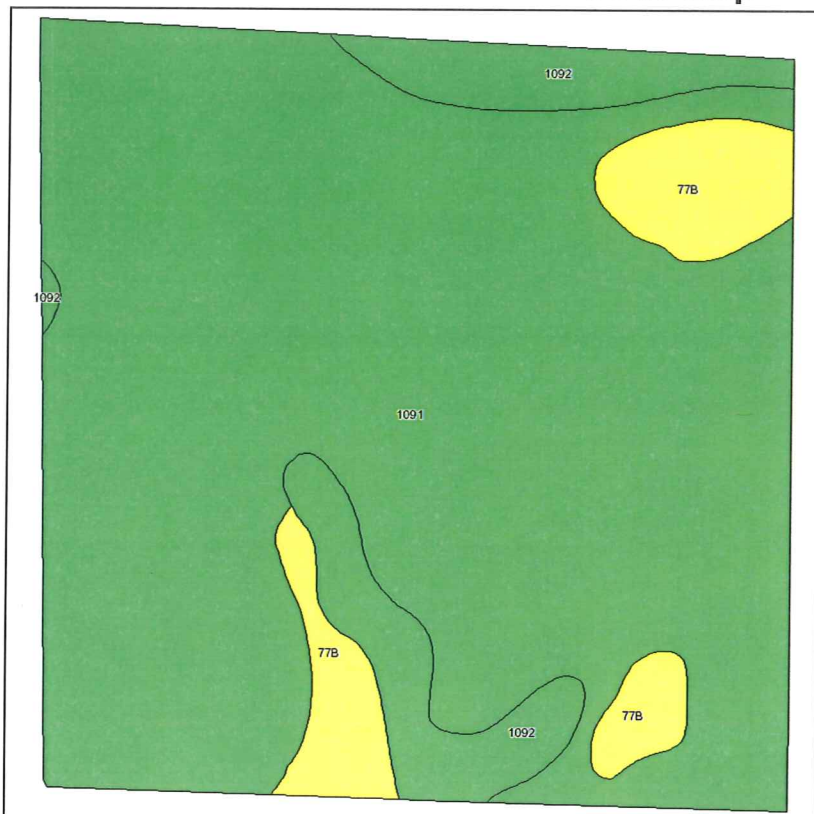


### Soils Map






State: **Iowa**  
 County: **Clay**  
 Location: **035-095N-037W**  
 Township: **Lincoln**  
 Acres: **157.3**  
 Date: **10/21/2010**

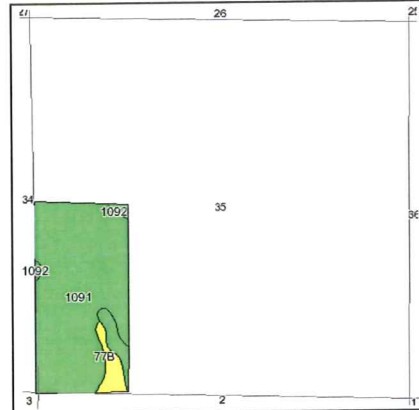
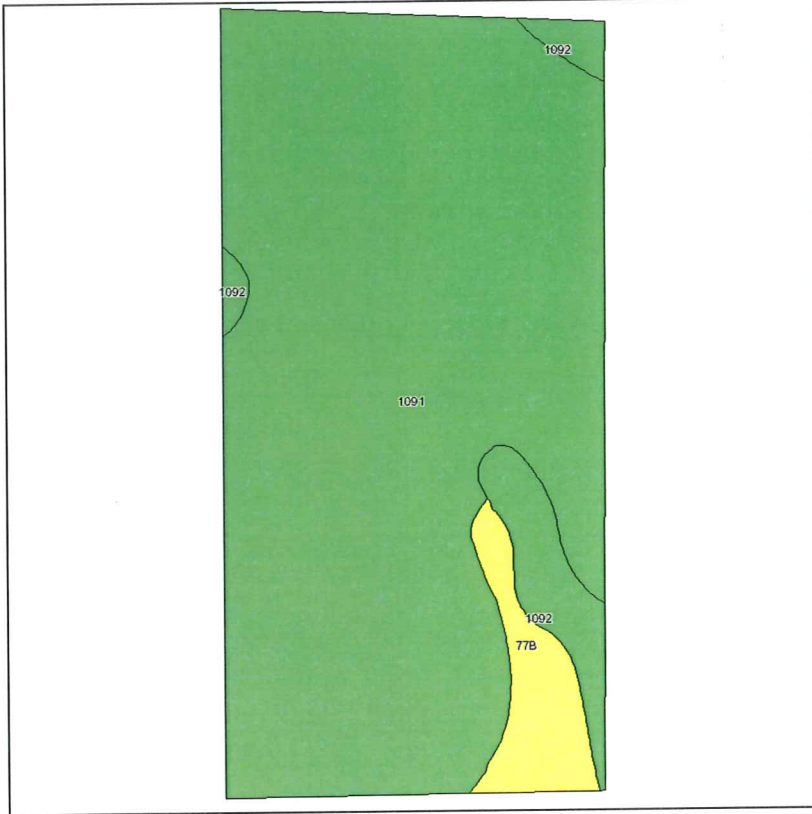


Maps provided by:  
  
 ©AgriData, Inc 2008  
 www.AgriDataInc.com

Fsa borders provided by the Farm Service Agency as of May 23, 2008.  
 Soils data provided by USDA and NRCS.

Code	Soil Description	Acres	Percent of field	CSR Legend	Non-Irr Class	CSR	Corn	Soybeans
1091	McCreath silty clay loam, 0 to 2 percent slopes	129.8	82.5%		I	83	197	54
1092	Gillett Grove silty clay loam, 0 to 2 percent slopes	14.6	9.3%		IIw	78	190	53
77B	Sac silty clay loam, 2 to 5 percent slopes	12.9	8.2%		IIe	71	181	47
<b>Weighted Average</b>						<b>81.6</b>	<b>195</b>	<b>53.3</b>

### Soils Map






State: **Iowa**  
 County: **Clay**  
 Location: **035-095N-037W**  
 Township: **Lincoln**  
 Acres: **79.9**  
 Date: **10/26/2010**



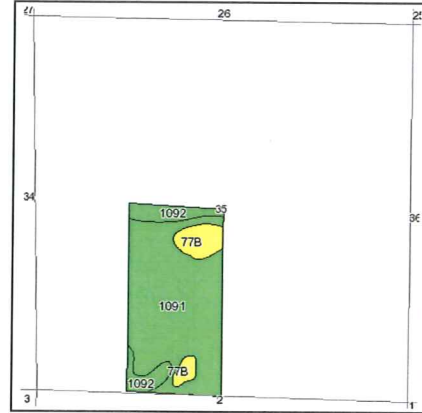
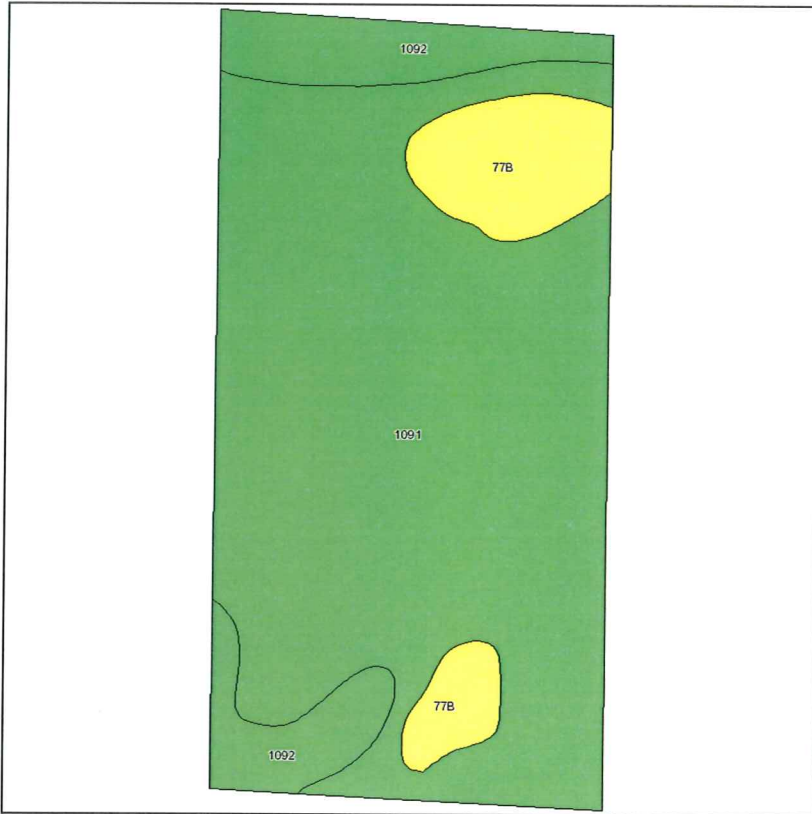
Maps provided by:  


©AgriData, Inc 2008  
 www.AgriDataInc.com

Fsa borders provided by the Farm Service Agency as of May 23, 2008.  
 Soils data provided by USDA and NRCS.

Code	Soil Description	Acres	Percent of field	CSR Legend	Non-Irr Class	CSR	Corn	Soybeans
1091	McCreath silty clay loam, 0 to 2 percent slopes	70.2	87.9%		I	83	197	54
1092	Gillett Grove silty clay loam, 0 to 2 percent slopes	5.2	6.5%		IIw	78	190	53
77B	Sac silty clay loam, 2 to 5 percent slopes	4.5	5.6%		Ile	71	181	47
<b>Weighted Average</b>						<b>82</b>	<b>195.6</b>	<b>53.5</b>

### Soils Map



State: **Iowa**  
 County: **Clay**  
 Location: **035-095N-037W**  
 Township: **Lincoln**  
 Acres: **79.9**  
 Date: **10/26/2010**



Fsa borders provided by the Farm Service Agency as of May 23, 2008.  
 Soils data provided by USDA and NRCS.

Code	Soil Description	Acres	Percent of field	CSR Legend	Non-Irr Class	CSR	Corn	Soybeans
1091	McCreath silty clay loam, 0 to 2 percent slopes	61.8	77.3%		I	83	197	54
1092	Gillett Grove silty clay loam, 0 to 2 percent slopes	9.7	12.1%		Ilw	78	190	53
77B	Sac silty clay loam, 2 to 5 percent slopes	8.4	10.5%		Ile	71	181	47
<b>Weighted Average</b>						<b>81.1</b>	<b>194.3</b>	<b>53.1</b>