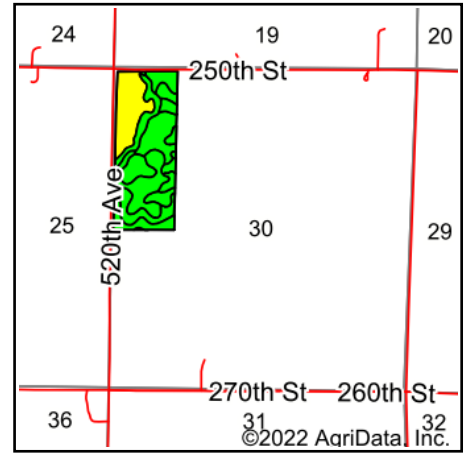
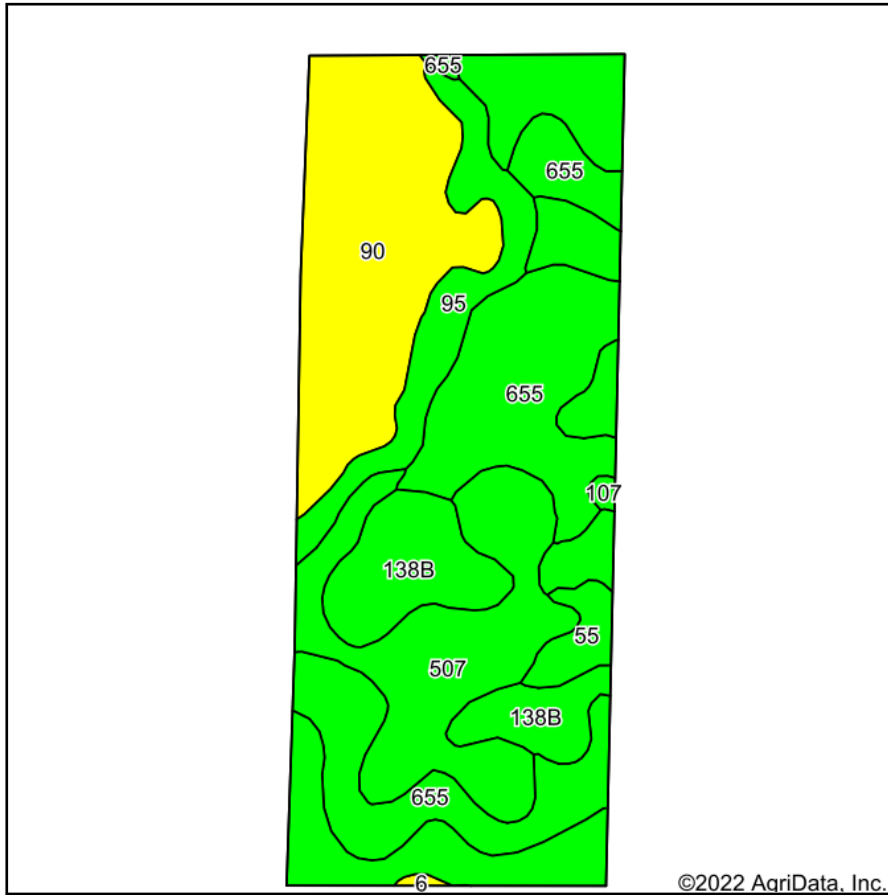


Soils Map



State: **Iowa**
 County: **Emmet**
 Location: **30-98N-31W**
 Township: **Denmark**
 Acres: **59.34**
 Date: **8/11/2022**

& REAL ESTATE, INC
MIDWEST LAND
 712-262-3110 MANAGEMENT
 Maps Provided By:
surety
 CUSTOMIZED ONLINE MAPPING
 © AgriData, Inc. 2021 www.AgriDataInc.com



Area Symbol: IA063, Soil Area Version: 31						
Code	Soil Description	Acres	Percent of field	CSR2 Legend	CSR2**	CSR
507	Canisteo clay loam, 0 to 2 percent slopes	18.92	31.9%		84	73
655	Crippin loam, 1 to 3 percent slopes	14.86	25.0%		91	77
90	Okoboji mucky silt loam, 0 to 1 percent slopes	12.70	21.4%		55	54
138B	Clarion loam, 2 to 6 percent slopes	6.88	11.6%		89	74
95	Harps clay loam, 0 to 2 percent slopes	4.48	7.5%		72	57
55	Nicollet clay loam, 1 to 3 percent slopes	1.23	2.1%		89	82
107	Webster clay loam, 0 to 2 percent slopes	0.17	0.3%		86	77
6	Okoboji silty clay loam, 0 to 1 percent slopes	0.10	0.2%		59	53
Weighted Average					79.3	69

**IA has updated the CSR values for each county to CSR2.
 Soils data provided by USDA and NRCS.