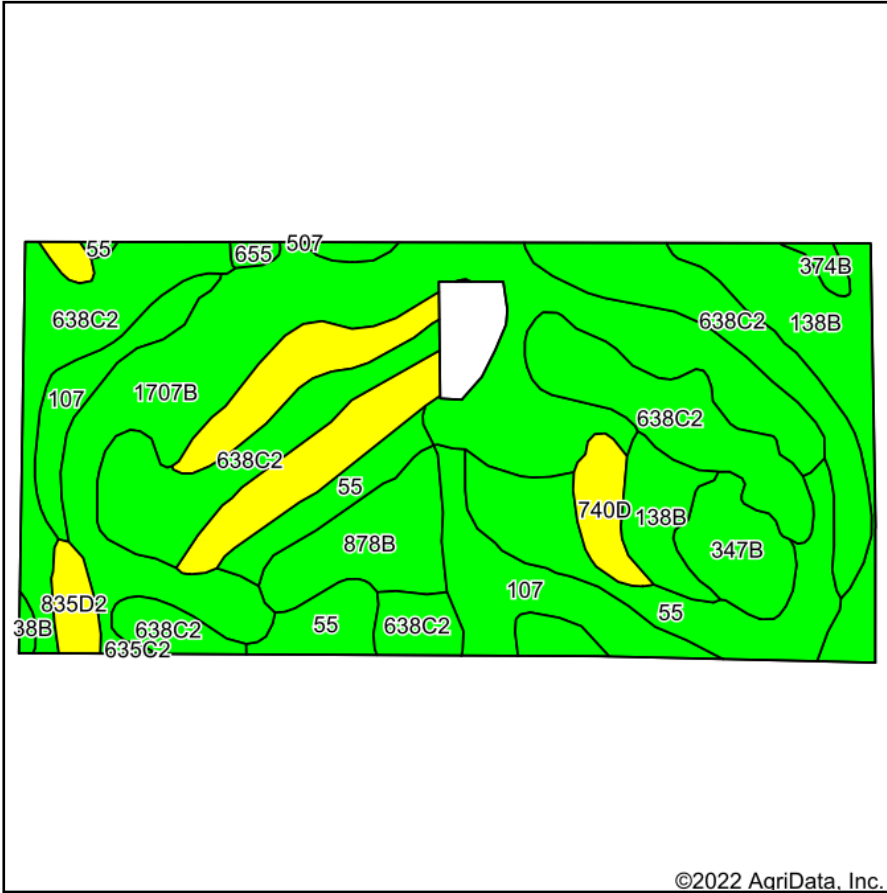
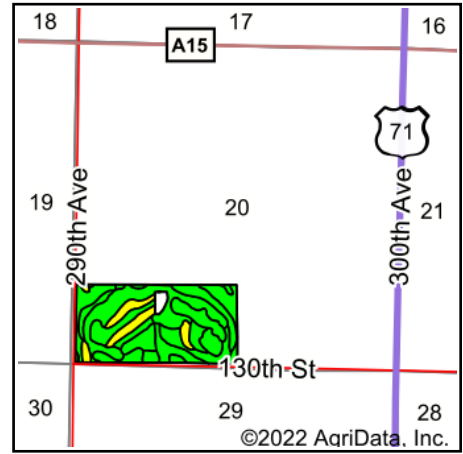


Soils Map



©2022 AgriData, Inc.

Soils data provided by USDA and NRCS.



©2022 AgriData, Inc.

State: **Iowa**
 County: **Dickinson**
 Location: **20-100N-35W**
 Township: **Superior**
 Acres: **76.58**
 Date: **5/25/2022**

MIDWEST LAND & REAL ESTATE, INC
 712-262-3110 MANAGEMENT

Maps Provided By:



© AgriData, Inc. 2021

www.AgriDataInc.com



Area Symbol: IA059, Soil Area Version: 31

Code	Soil Description	Acres	Percent of field	CSR2 Legend	Non-Irr Class *c	CSR2**	CSR	
638C2	Clarion-Storden complex, 6 to 10 percent slopes, moderately eroded	20.59	26.9%		IIIe	75	52	
1707B	Delft-Terril complex, 1 to 5 percent slopes	18.14	23.7%		IIw	78	59	
55	Nicollet clay loam, 1 to 3 percent slopes	9.35	12.2%		Iw	89	73	
138B	Clarion loam, 2 to 6 percent slopes	7.05	9.2%		Ile	89	73	
107	Webster clay loam, 0 to 2 percent slopes	6.03	7.9%		IIw	86	70	
634E2	Omsrud-Storden complex, 10 to 22 percent slopes, moderately eroded	5.72	7.5%		IVe	36	18	
878B	Ocheyedan loam, 2 to 5 percent slopes	3.59	4.7%		Ile	92	74	
347B	Augusta Lake loam, 1 to 5 percent slopes	2.50	3.3%		IIIe	74	59	
740D	Hawick gravelly sandy loam, 12 to 20 percent slopes	1.41	1.8%		VIIIs	5	11	
835D2	Omsrud-Storden complex, 10 to 16 percent slopes, moderately eroded	1.26	1.6%		IVe	53	35	
635C2	Belview-Storden complex, 5 to 9 percent slopes, moderately eroded	0.35	0.5%		IIIe	66	18	
374B	Okabena silty clay loam, 1 to 5 percent slopes	0.35	0.5%		Iw	91	73	
655	Crippin loam, 1 to 3 percent slopes	0.24	0.3%		Ie	91	71	
Weighted Average						2.45	75.9	57.3

**IA has updated the CSR values for each county to CSR2.

*c: Using Capabilities Class Dominant Condition Aggregation Method

Soils data provided by USDA and NRCS.