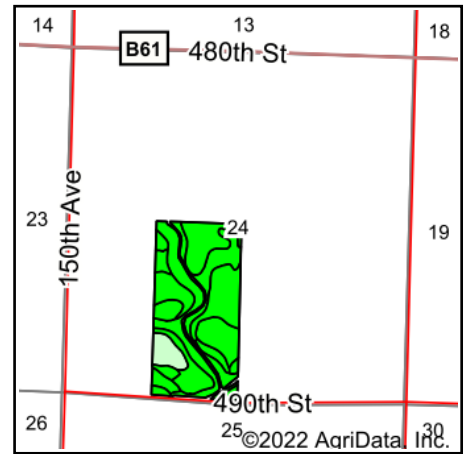
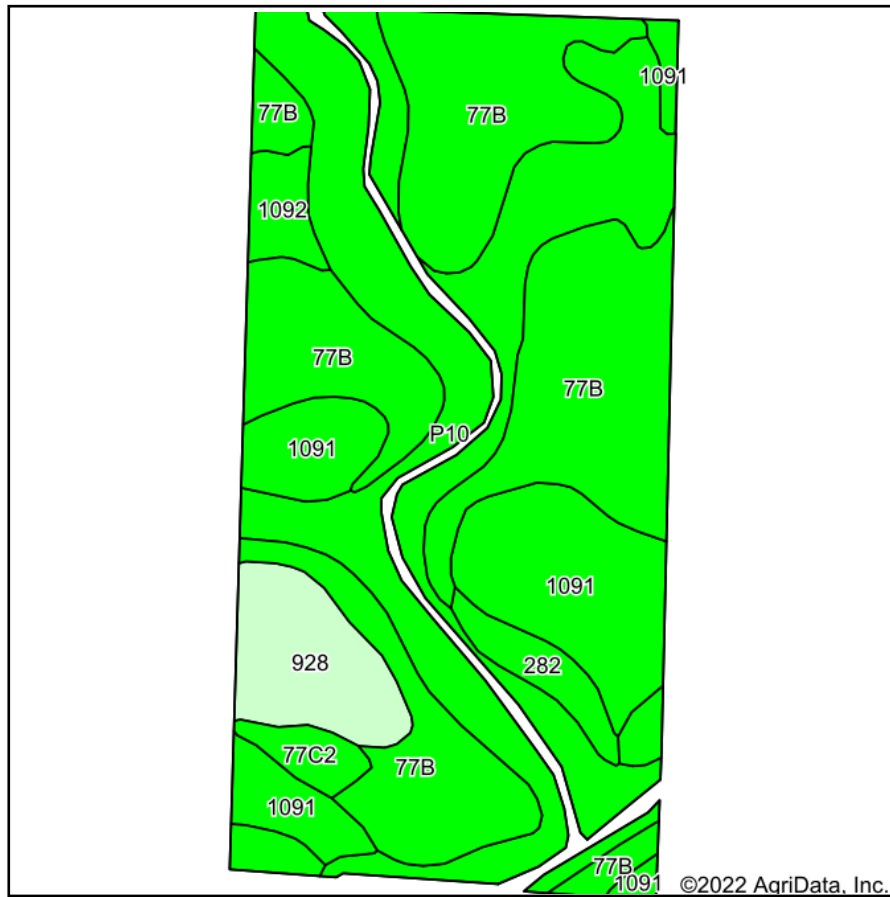


Soils Map



State: **Iowa**
 County: **Clay**
 Location: **24-94N-38W**
 Township: **Peterson**
 Acres: **78.56**
 Date: **4/28/2022**

MIDWEST LAND & REAL ESTATE, INC.
 712-262-3110 **MANAGEMENT**
 Maps Provided By:

 CUSTOMIZED ONLINE MAPPING
 © AgriData, Inc. 2021 www.AgriDataInc.com

Area Symbol: IA041, Soil Area Version: 31						
Code	Soil Description	Acres	Percent of field	CSR2 Legend	CSR2**	CSR
77B	Sac silty clay loam, loam substratum, 2 to 5 percent slopes	32.81	41.8%		95	71
P10	Afton silty clay loam, Sheldon creek formation, 0 to 2 percent slopes, occasionally flooded	23.95	30.5%		82	
1091	McCreath silty clay loam, 0 to 2 percent slopes	12.41	15.8%		98	83
928	Annieville silty clay loam, 0 to 2 percent slopes	4.88	6.2%		100	78
282	Ransom silty clay loam, 1 to 3 percent slopes	1.77	2.3%		95	81
1092	Gillett Grove silty clay loam, 0 to 2 percent slopes	1.52	1.9%		94	78
77C2	Sac silty clay loam, loam substratum, 5 to 9 percent slopes, eroded	1.22	1.6%		88	53
Weighted Average					91.7	*-

**IA has updated the CSR values for each county to CSR2.

*- CSR weighted average cannot be calculated on the current soils data, use prior data version for csr values.

Soils data provided by USDA and NRCS.