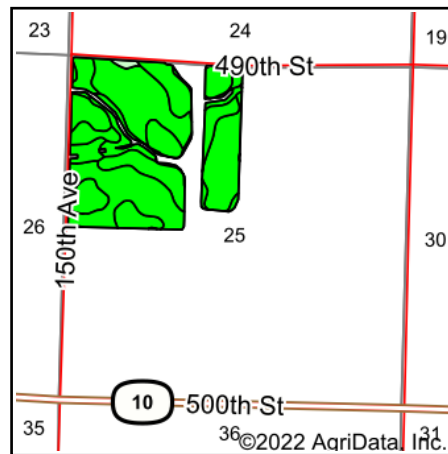


# Soils Map



State: **Iowa**  
 County: **Clay**  
 Location: **25-94N-38W**  
 Township: **Peterson**  
 Acres: **129.09**  
 Date: **4/28/2022**

& REAL ESTATE, INC  
**MIDWEST LAND**  
 712-262-3110 MANAGEMENT  
 Maps Provided By:  
  
 CUSTOMIZED ONLINE MAPPING  
 © AgriData, Inc. 2021 www.AgriDataInc.com



Area Symbol: IA041, Soil Area Version: 31

Code	Soil Description	Acres	Percent of field	CSR2 Legend	CSR2**	CSR
77B	Sac silty clay loam, loam substratum, 2 to 5 percent slopes	60.41	46.8%		95	71
1091	McCreath silty clay loam, 0 to 2 percent slopes	29.38	22.8%		98	83
77C2	Sac silty clay loam, loam substratum, 5 to 9 percent slopes, eroded	13.80	10.7%		88	53
282	Ransom silty clay loam, 1 to 3 percent slopes	8.94	6.9%		95	81
P10	Afton silty clay loam, Sheldon creek formation, 0 to 2 percent slopes, occasionally flooded	8.31	6.4%		82	
1092	Gillett Grove silty clay loam, 0 to 2 percent slopes	7.04	5.5%		94	78
928	Annieville silty clay loam, 0 to 2 percent slopes	0.85	0.7%		100	78
133	Colo silty clay loam, deep loess, 0 to 2 percent slopes, occasionally flooded	0.36	0.3%		78	73
Weighted Average					94	*-

\*\*IA has updated the CSR values for each county to CSR2.

\*- CSR weighted average cannot be calculated on the current soils data, use prior data version for csr values.

Soils data provided by USDA and NRCS.