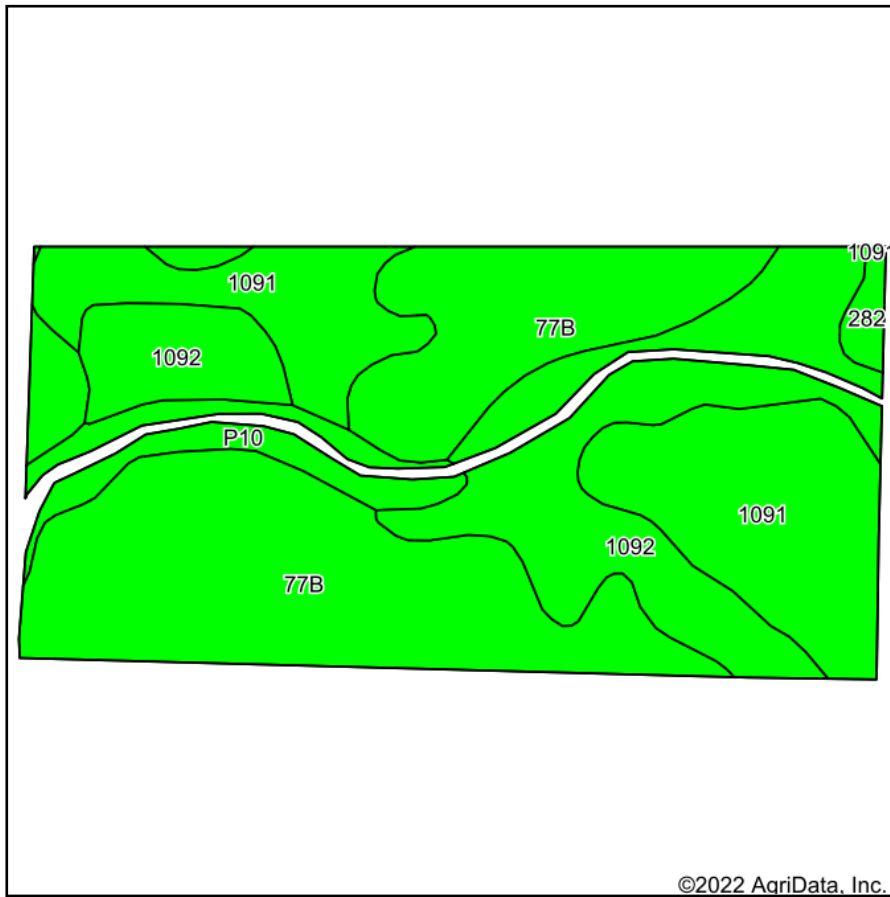
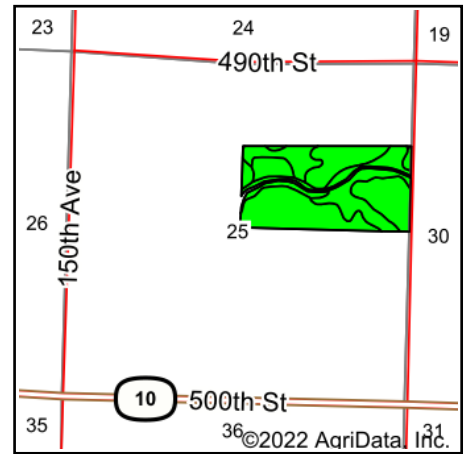


Soils Map



Soils data provided by USDA and NRCS.



State: **Iowa**
 County: **Clay**
 Location: **24-94N-38W**
 Township: **Peterson**
 Acres: **74.29**
 Date: **5/3/2022**

MIDWEST LAND & REAL ESTATE, INC.
 712-262-3110 MANAGEMENT
 Maps Provided By:
surety
 CUSTOMIZED ONLINE MAPPING
 © AgriData, Inc. 2021 www.AgriDataInc.com



Area Symbol: IA041, Soil Area Version: 31						
Code	Soil Description	Acres	Percent of field	CSR2 Legend	CSR2**	CSR
77B	Sac silty clay loam, loam substratum, 2 to 5 percent slopes	32.20	43.3%		95	71
1092	Gillett Grove silty clay loam, 0 to 2 percent slopes	19.13	25.8%		94	78
1091	McCreath silty clay loam, 0 to 2 percent slopes	17.95	24.2%		98	83
P10	Afton silty clay loam, Sheldon creek formation, 0 to 2 percent slopes, occasionally flooded	4.22	5.7%		82	
282	Ransom silty clay loam, 1 to 3 percent slopes	0.79	1.1%		95	81
Weighted Average					94.7	*-

**IA has updated the CSR values for each county to CSR2.

*- CSR weighted average cannot be calculated on the current soils data, use prior data version for csr values.

Soils data provided by USDA and NRCS.