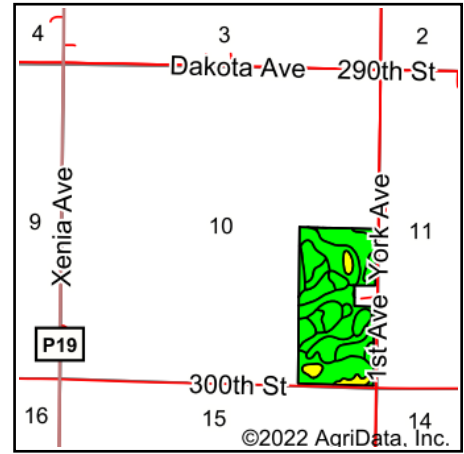
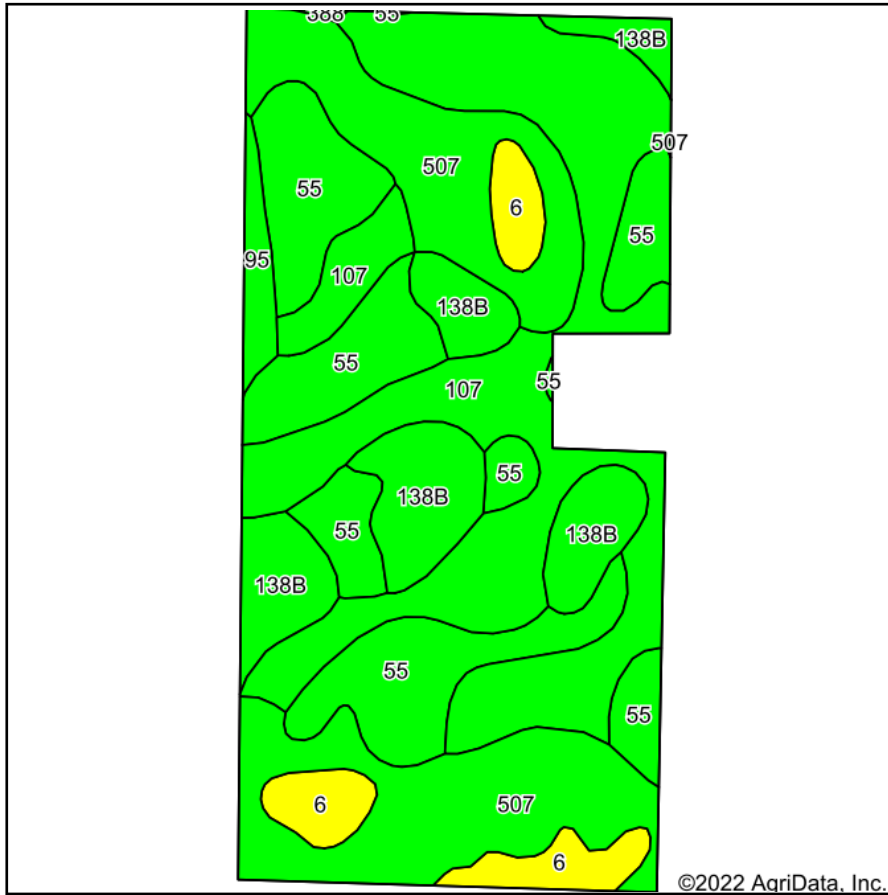


Soils Map



State: **Iowa**
 County: **Calhoun**
 Location: **10-87N-31W**
 Township: **Cedar**
 Acres: **73.31**
 Date: **5/12/2022**

& REAL ESTATE, INC
MIDWEST LAND
 712-262-3110 MANAGEMENT
 Maps Provided By:

 CUSTOMIZED ONLINE MAPPING
 © AgriData, Inc. 2021 www.AgriDataInc.com



Area Symbol: IA025, Soil Area Version: 31						
Code	Soil Description	Acres	Percent of field	CSR2 Legend	CSR2**	CSR
107	Webster clay loam, 0 to 2 percent slopes	23.65	32.3%		86	83
507	Canisteo clay loam, 0 to 2 percent slopes	17.40	23.7%		84	78
55	Nicollet clay loam, 1 to 3 percent slopes	17.08	23.3%		89	88
138B	Clarion loam, 2 to 6 percent slopes	9.70	13.2%		89	80
6	Okoboji silty clay loam, 0 to 1 percent slopes	4.14	5.6%		59	57
95	Harps clay loam, 0 to 2 percent slopes	1.28	1.7%		72	62
388	Kossuth silty clay loam, 0 to 2 percent slopes	0.06	0.1%		86	77
Weighted Average					84.9	80.7

**IA has updated the CSR values for each county to CSR2.
 Soils data provided by USDA and NRCS.