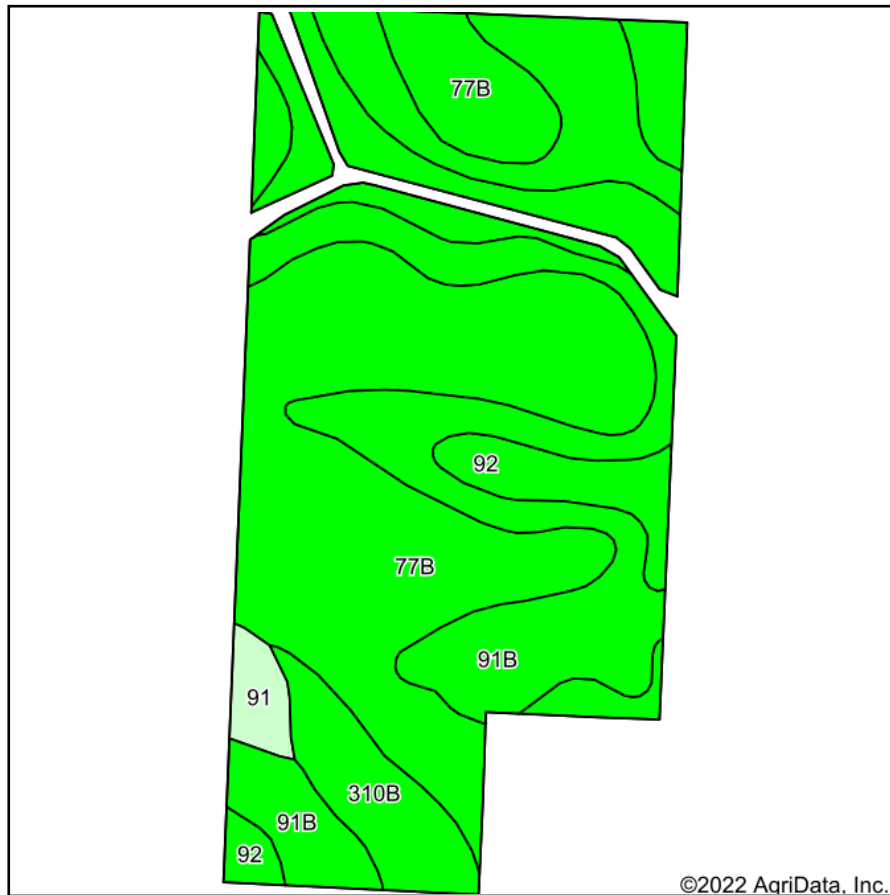
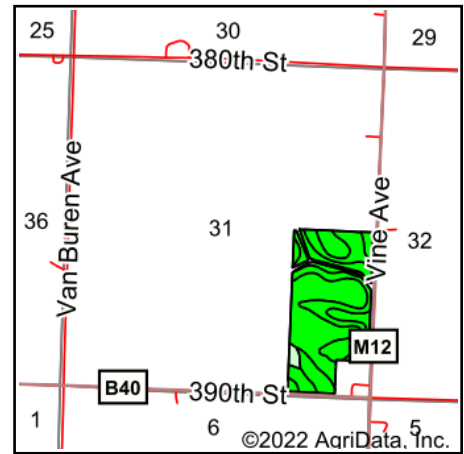


# Soils Map



Soils data provided by USDA and NRCS.



State: **Iowa**  
 County: **O'Brien**  
 Location: **31-96N-39W**  
 Township: **Omega**  
 Acres: **67.79**  
 Date: **12/13/2022**

& REAL ESTATE, INC  
**MIDWEST LAND**  
 712-262-3110 MANAGEMENT  
 Maps Provided By:  
  
 CUSTOMIZED ONLINE MAPPING  
 © AgriData, Inc. 2021 www.AgriDataInc.com



Area Symbol: IA141, Soil Area Version: 27

| Code             | Soil Description  | Acres | Percent of field | CSR2 Legend | CSR2**    | CSR         |
|------------------|---|-------|------------------|-------------|-----------|-------------|
| 77B              | Sac silty clay loam, loam substratum, 2 to 5 percent slopes | 30.53 | 45.0%            |             | 95        | 68          |
| 91B              | Primghar silty clay loam, 2 to 5 percent slopes             | 22.53 | 33.2%            |             | 95        | 78          |
| 92               | Marcus silty clay loam, 0 to 2 percent slopes               | 9.46  | 14.0%            |             | 94        | 75          |
| 310B             | Galva silty clay loam, 2 to 5 percent slopes                | 4.03  | 5.9%             |             | 95        | 70          |
| 91               | Primghar silty clay loam, 0 to 2 percent slopes             | 1.24  | 1.8%             |             | 100       | 80          |
| Weighted Average |   |       |                  |             | <b>95</b> | <b>72.6</b> |

\*\*IA has updated the CSR values for each county to CSR2.  
 Soils data provided by USDA and NRCS.