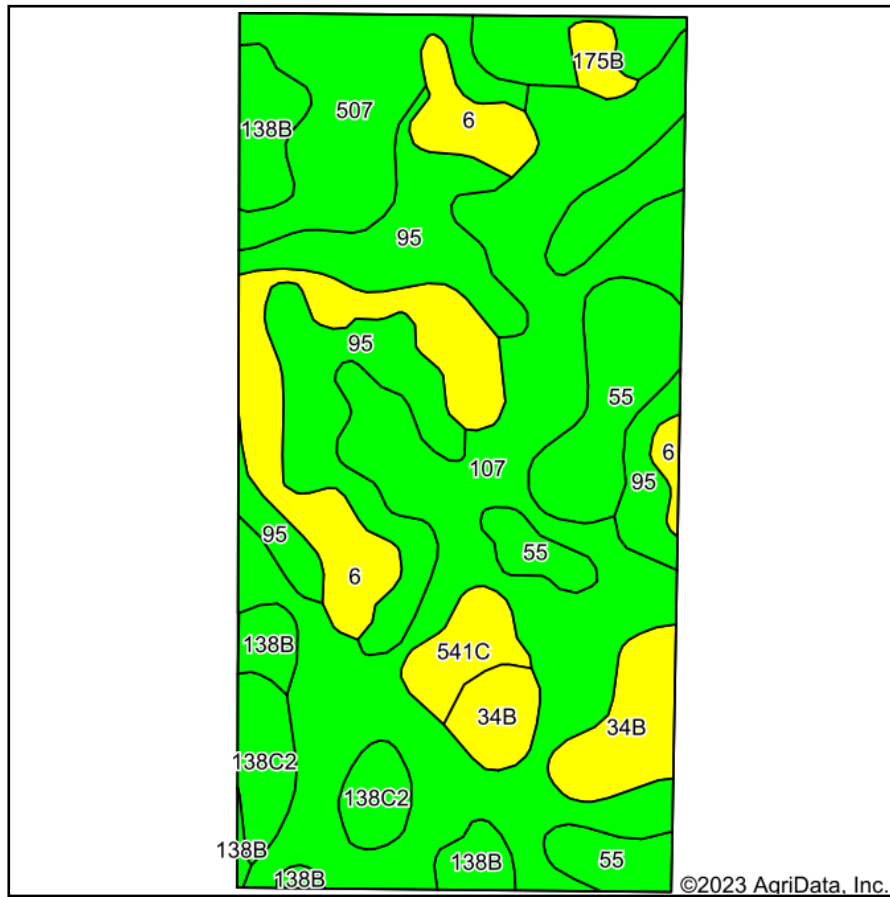
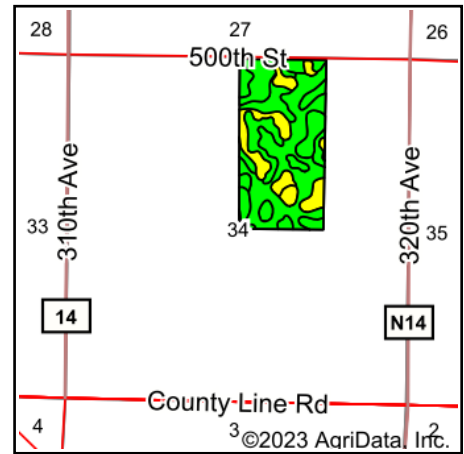


# Soils Map



Soils data provided by USDA and NRCS.



State: **Iowa**  
 County: **Clay**  
 Location: **34-94N-35W**  
 Township: **Garfield**  
 Acres: **79.19**  
 Date: **5/8/2023**

& REAL ESTATE, INC  
**MIDWEST LAND**  
 712-262-3110 MANAGEMENT  
 Maps Provided By:  
  
 CUSTOMIZED ONLINE MAPPING  
 © AgriData, Inc. 2023 www.AgriDataInc.com



Area Symbol: IA041, Soil Area Version: 32

Code	Soil Description	Acres	Percent of field	CSR2 Legend	Non-Irr Class *c	CSR2**	CSR
107	Webster clay loam, 0 to 2 percent slopes	27.84	35.2%		IIw	86	77
95	Harps clay loam, 0 to 2 percent slopes	12.37	15.6%		IIw	72	57
55	Nicollet clay loam, 1 to 3 percent slopes	10.24	12.9%		Iw	89	82
6	Okoboji silty clay loam, 0 to 1 percent slopes	8.60	10.9%		IIlw	59	55
507	Canisteo clay loam, 0 to 2 percent slopes	6.60	8.3%		IIw	84	73
34B	Estherville sandy loam, 2 to 6 percent slopes	4.24	5.4%		IIIs	27	19
138B	Clarion loam, 2 to 6 percent slopes	3.79	4.8%		IIe	89	74
138C2	Clarion loam, 6 to 10 percent slopes, moderately eroded	3.02	3.8%		IIle	83	59
541C	Estherville-Hawick complex, 5 to 9 percent slopes	1.80	2.3%		IIIs	24	5
175B	Dickinson fine sandy loam, 2 to 5 percent slopes	0.69	0.9%		IIle	47	36
Weighted Average					2.10	76.2	65.9

\*\*IA has updated the CSR values for each county to CSR2.

\*c: Using Capabilities Class Dominant Condition Aggregation Method  
 Soils data provided by USDA and NRCS.