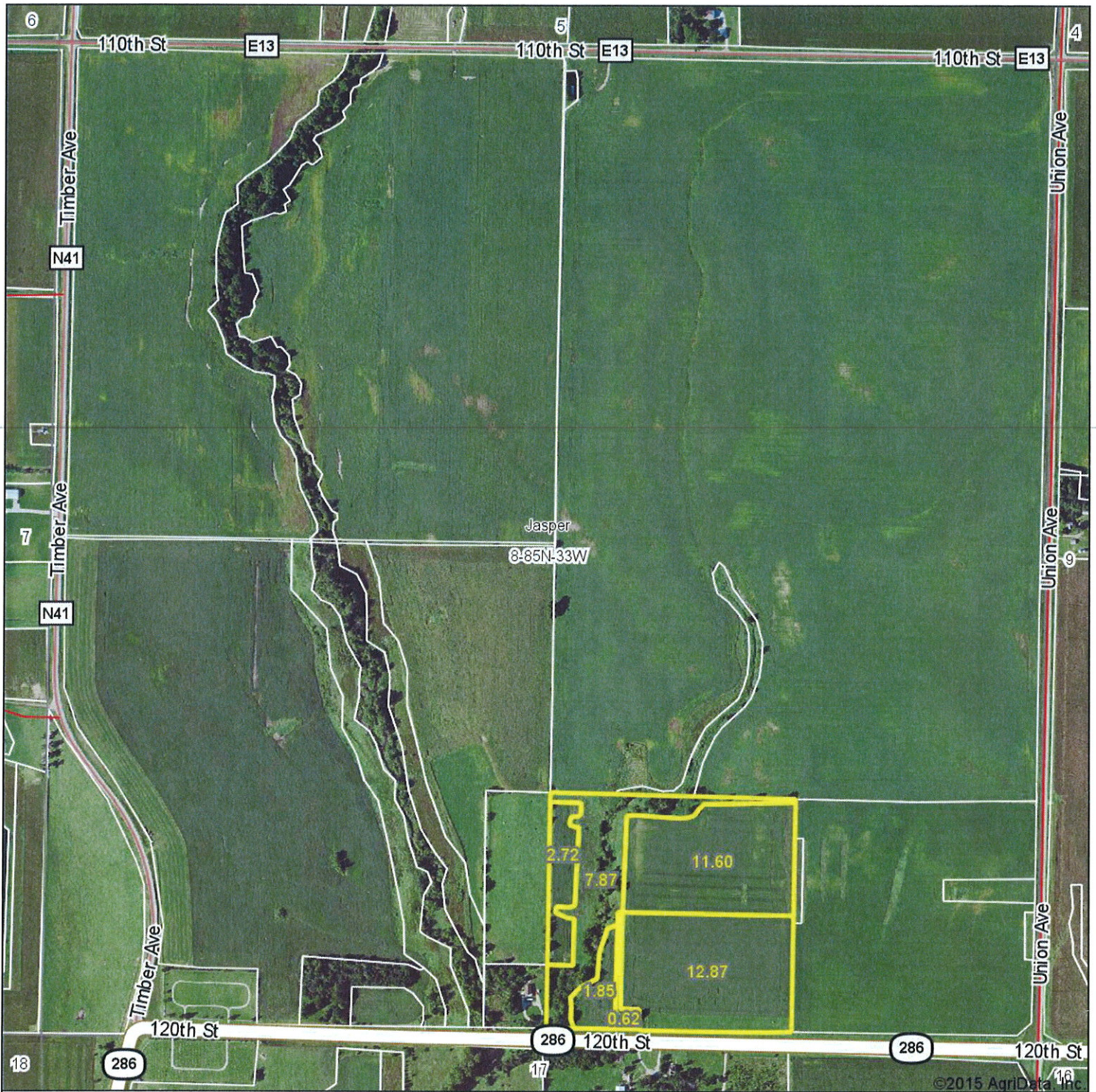


# Aerial Map



& REAL ESTATE, INC  
**MIDWEST LAND**  
712-262-3110 MANAGEMENT

Maps Provided By:

 **surety**  
CUSTOMIZED ONLINE MAPPING  
© AgriData, Inc. 2015 www.AgriDataInc.com

**8-85N-33W**  
**Carroll County**  
**Iowa**

map center: 42° 11' 17.41, 94° 43' 0.65

scale: 9498

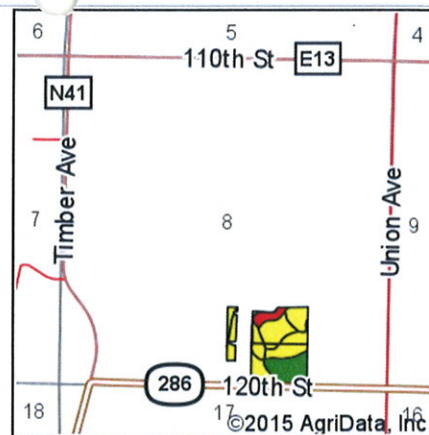
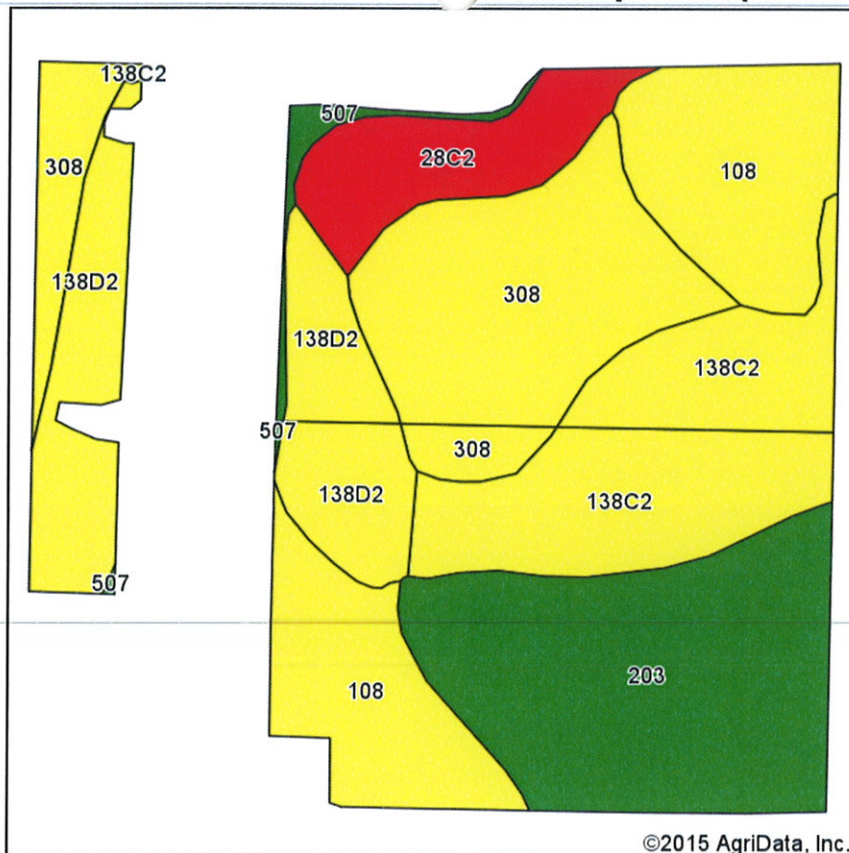


9/2/2015

Field borders provided by Farm Service Agency as of 5/21/2008.



# Soils Map-CSR(as of 1/21/12)



State: Iowa  
County: Carroll  
Location: 8-85N-33W  
Township: Jasper  
Acres: 27.19  
Date: 9/2/2015

Midwest Land & REAL ESTATE, INC.  
712-262-3110 MANAGEMENT

Maps Provided By:

surety®  
CUSTOMIZED ONLINE MAPPING  
© AgriData, Inc. 2015 www.AgriDataInc.com



## Viewing soils data as of 1/21/2012

Code	Soil Description	Acres	Percent of field	CSR Legend	Non-Irr Class *c	CSR*	Corn	Soybeans
203	Cylinder loam, 32 to 40 inches to sand and gravel, 0 to 2 percent slopes	5.90	21.7%		IIs	75	188	42
308	Wadena loam, 32 to 40 inches to sand and gravel, 0 to 2 percent slopes	5.41	19.9%		IIs	69	180	36
108	Wadena loam, 24 to 32 inches to sand and gravel, 0 to 2 percent slopes	5.08	18.7%		IIs	54	160	31
138C2	Clarion loam, 5 to 9 percent slopes, moderately eroded	4.74	17.4%		IIle	63	172	42
138D2	Clarion loam, 9 to 14 percent slopes, moderately eroded	3.86	14.2%		IIle	54	160	39
28C2	Dickman sandy loam, 5 to 9 percent slopes, moderately eroded	1.86	6.8%		IVe	22	117	21
507	Canisteo silty clay loam, 0 to 2 percent slopes	0.34	1.3%		IIw	78	192	44
Weighted Average						61.2	169.6	36.9

\*The CSR ratings are dated 1/21/2012 and will be available to aid in the transition to CSR2.

\*c: Using Capabilities Class Dominant Condition Aggregation Method

Soils data provided by USDA and NRCS.