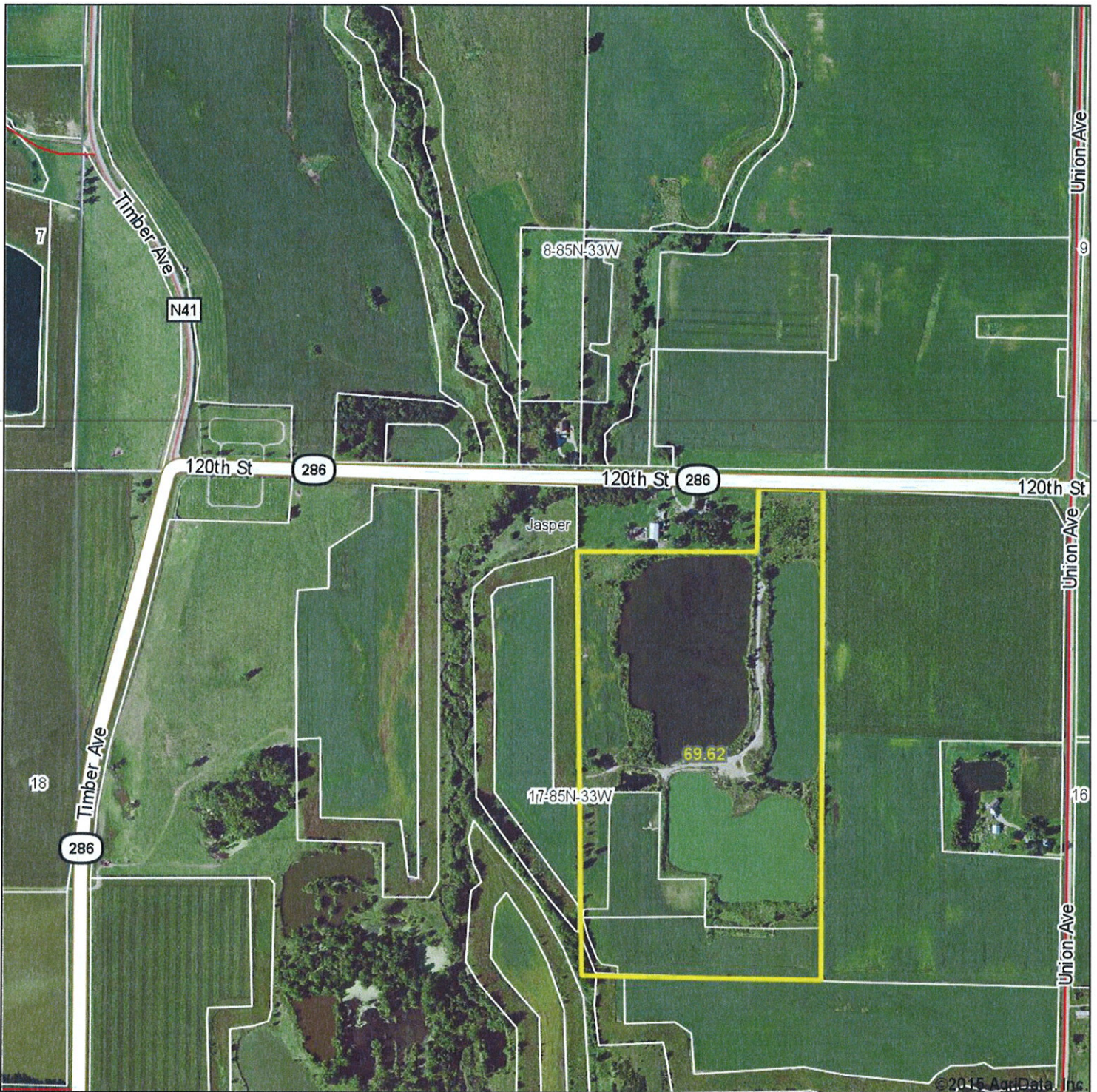


Aerial Map



MIDWEST LAND
712-262-3110 MANAGEMENT

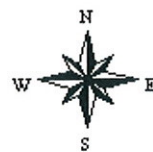
Maps Provided By:



17-85N-33W
Carroll County
Iowa

map center: 42° 10' 47.77, 94° 43' 2.1

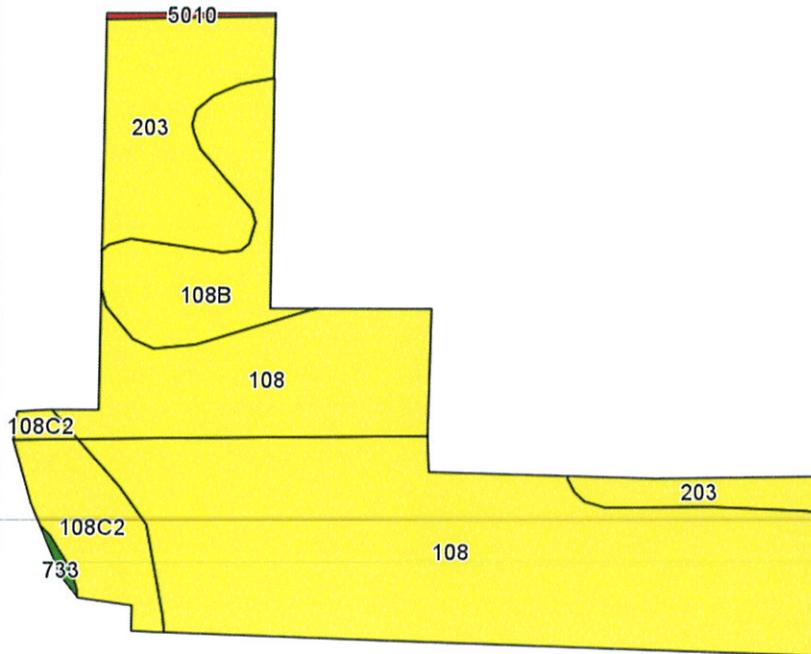
scale: 9498



9/14/2015

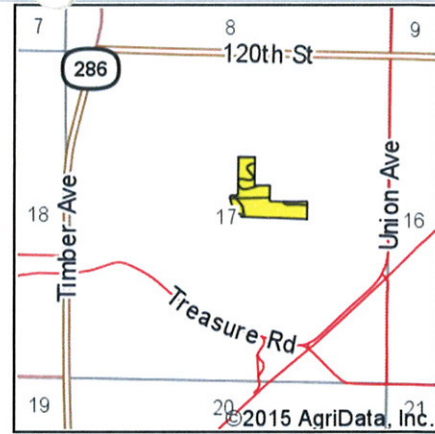
Field borders provided by Farm Service Agency as of 5/21/2008.

Soils Map-CSR2



©2015 AgriData, Inc.

Soils data provided by USDA and NRCS.



State: Iowa
County: Carroll
Location: 17-85N-33W
Township: Jasper
Acres: 13.3
Date: 9/2/2015

& REAL ESTATE, INC.
MIDWEST LAND
712-262-3110 MANAGEMENT

Maps Provided By:



© AgriData, Inc. 2015 www.AgriDataInc.com



Area Symbol: IA027, Soil Area Version: 19

Code	Soil Description	Acres	Percent of field	CSR2 Legend	Non-Irr Class *c	CSR2**	CSR
108	Wadena loam, 24 to 32 inches to sand and gravel, 0 to 2 percent slopes	8.88	66.8%		Ils	58	54
203	Cylinder loam, 32 to 40 inches to sand and gravel, 0 to 2 percent slopes	2.14	16.1%		Ils	60	75
108B	Wadena loam, 24 to 32 inches to sand and gravel, 2 to 5 percent slopes	1.34	10.1%		Ile	54	49
108C2	Wadena loam, 24 to 32 inches to sand and gravel, 5 to 9 percent slopes, moderately eroded	0.94	7.1%		IIIle	47	24
Weighted Average						57.1	54.8

**IA has updated the CSR values for each county to CSR2.

*c: Using Capabilities Class Dominant Condition Aggregation Method

Soils data provided by USDA and NRCS.