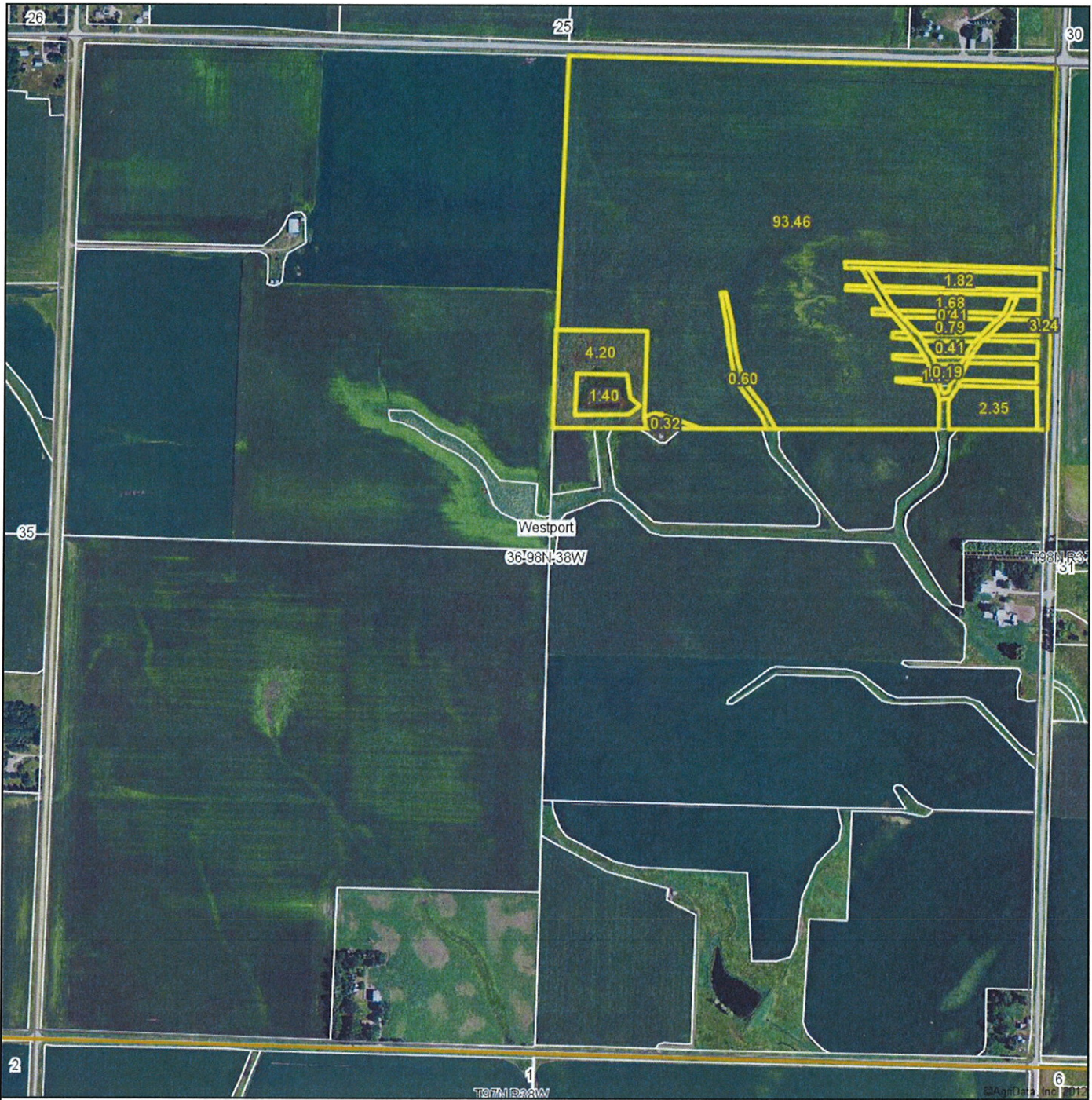


# Aerial Map



**Midwest Land**  
712-262-3110 MANAGEMENT

Maps provided by:



©AgriData, Inc. 2012

[www.AgriDataInc.com](http://www.AgriDataInc.com)

**36-98N-38W**  
**Dickinson County**  
**Iowa**

map center: 43° 15' 45.22, 95° 16' 45.34

scale: 8679

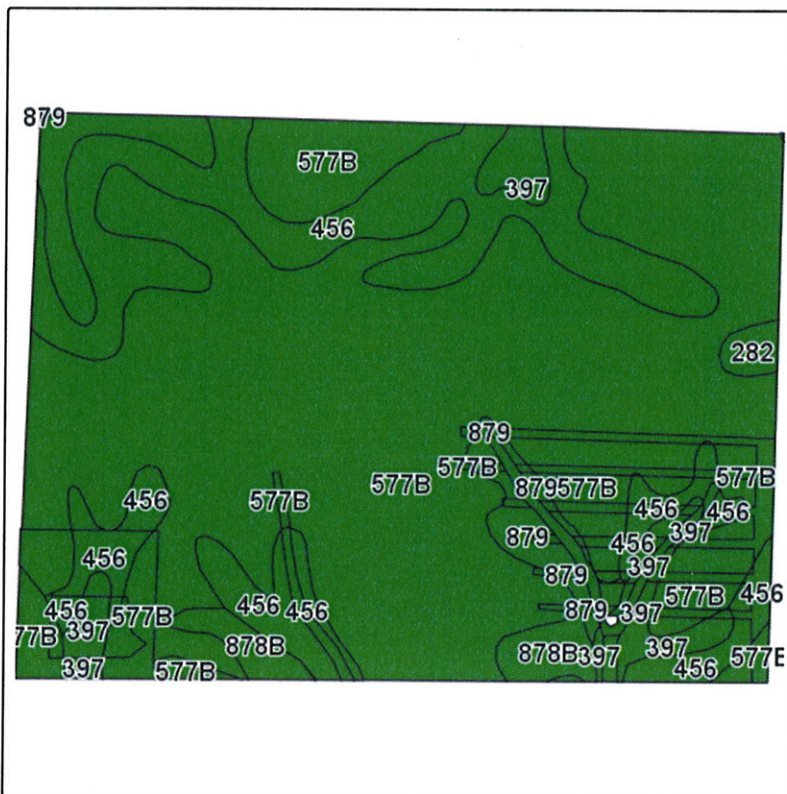


8/27/2012

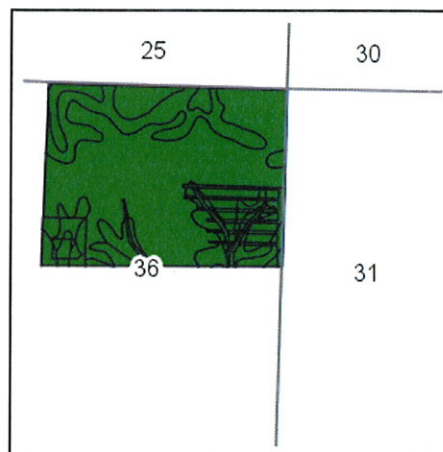
Field borders provided by Farm Service Agency as of 5/21/2008. Aerial photography provided by Aerial Photography Field Office.



# Soils Map



Field borders provided by Farm Service Agency as of 5/21/2008.  
Soils data provided by USDA and NRCS.



State: **Iowa**  
County: **Dickinson**  
Location: **36-98N-38W**  
Township: **Westport**  
Acres: **114.9**  
Date: **8/27/2012**

& REAL ESTATE, INC.  
**MIDWEST LAND**  
712-262-3110 MANAGEMENT



Maps provided by:



©AgriData, Inc 2012  
www.AgriDataInc.com

| Code             | Soil Description                                  | Acres | Percent of field | CSR Legend | Non-Irr Class | CSR* 1/21/12 | CSR(2)** | Corn | Soybeans |
|------------------|---|-------|------------------|------------|---------------|--------------|----------|------|----------|
| 577B             | Everly clay loam, 2 to 5 percent slopes           | 76.7  | 66.9%            |            | Ile           | 73           | 73       |      |          |
| 456              | Wilmington silty clay loam, 1 to 3 percent slopes | 23.3  | 20.2%            |            | I             | 73           | 73       |      |          |
| 397              | Letri silty clay loam, 0 to 1 percent slopes      | 7.4   | 6.4%             |            | Ilw           | 72           | 72       |      |          |
| 879              | Fostoria loam, 1 to 3 percent slopes              | 3.1   | 2.7%             |            | I             | 73           | 73       |      |          |
| 878B             | Ocheyedan loam, 2 to 5 percent slopes             | 2.6   | 2.2%             |            | Ile           | 74           | 74       |      |          |
| 77B              | Sac silty clay loam, 2 to 5 percent slopes        | 1.1   | 0.9%             |            | Ile           | 76           | 76       | 153  | 47       |
| 282              | Ransom silty clay loam, 1 to 3 percent slopes     | 0.7   | 0.6%             |            | I             | 78           | 78       | 159  | 48       |
| Weighted Average |   |       |                  |            |               | 72.9         | 72.9     | 2.3  | 0.7      |

\*CSR ratings as of 1/21/2012 will be available for a limited time to aid in the transition to CSR2.

\*\*These values could be either CSR or CSR2 as counties are updated during this transition.

For more information on the new CSR2 rating visit [http://www.ucs.iastate.edu/mnet/\\_repository/2012/soilmanagement/pdf/Burras.pdf](http://www.ucs.iastate.edu/mnet/_repository/2012/soilmanagement/pdf/Burras.pdf)