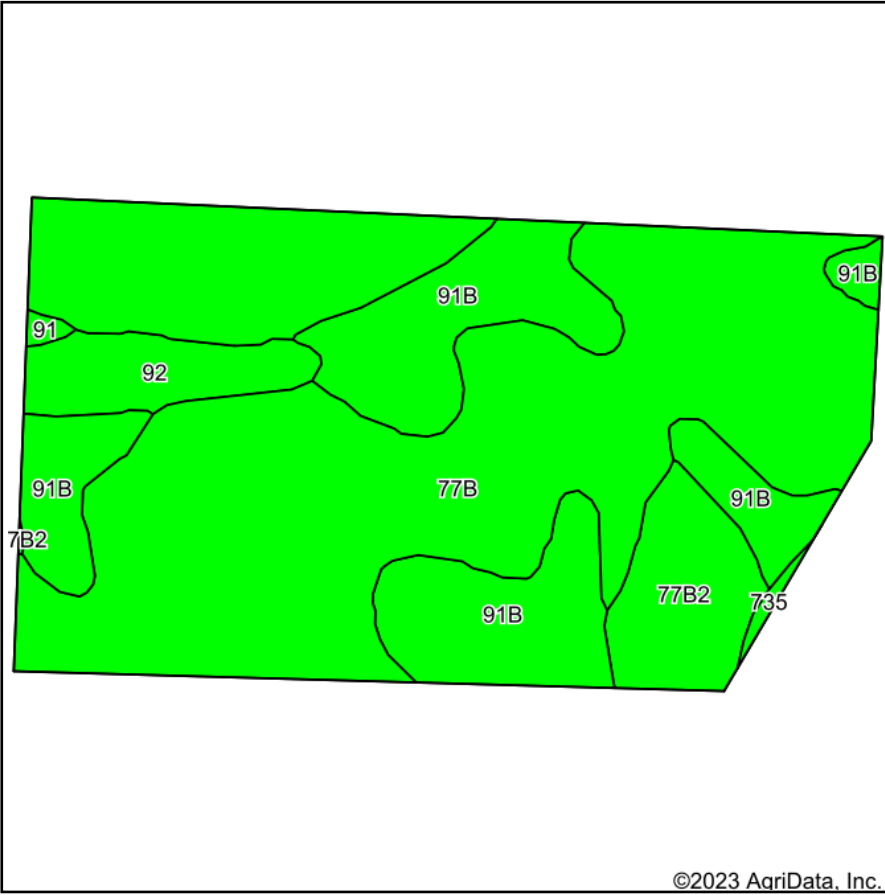
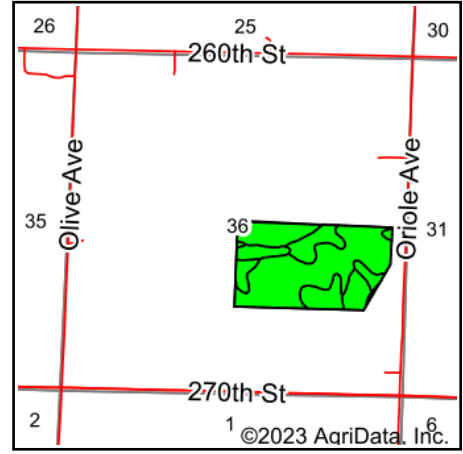


# Soils Map



Soils data provided by USDA and NRCS.



State: **Iowa**  
 County: **Osceola**  
 Location: **36-98N-42W**  
 Township: **Gilman**  
 Acres: **70.39**  
 Date: **4/18/2023**

**MIDWEST LAND** & REAL ESTATE, INC  
 712-262-3110 MANAGEMENT  
 Maps Provided By: **surety**  
 CUSTOMIZED ONLINE MAPPING  
 © AgriData, Inc. 2023 www.AgriDataInc.com

Area Symbol: IA143, Soil Area Version: 33

Code	Soil Description	Acres	Percent of field	CSR2 Legend	Non-Irr Class *c	CSR2**	CSR	
77B	Sac silty clay loam, loam substratum, 2 to 5 percent slopes	45.07	64.0%		Ile	95	77	
91B	Primghar silty clay loam, 2 to 5 percent slopes	16.73	23.8%		Ile	95	81	
77B2	Sac silty clay loam, loam substratum, 2 to 5 percent slopes, eroded	4.64	6.6%		Ile	92	74	
92	Marcus silty clay loam, 0 to 2 percent slopes	3.50	5.0%		Ilw	94	80	
735	Havelock loam, 0 to 2 percent slopes, occasionally flooded	0.24	0.3%		Ilw	74	57	
91	Primghar silty clay loam, 0 to 2 percent slopes	0.21	0.3%		Iw	100	86	
<b>Weighted Average</b>						<b>2.00</b>	<b>94.7</b>	<b>77.9</b>

\*\*IA has updated the CSR values for each county to CSR2.

\*c: Using Capabilities Class Dominant Condition Aggregation Method

Soils data provided by USDA and NRCS.