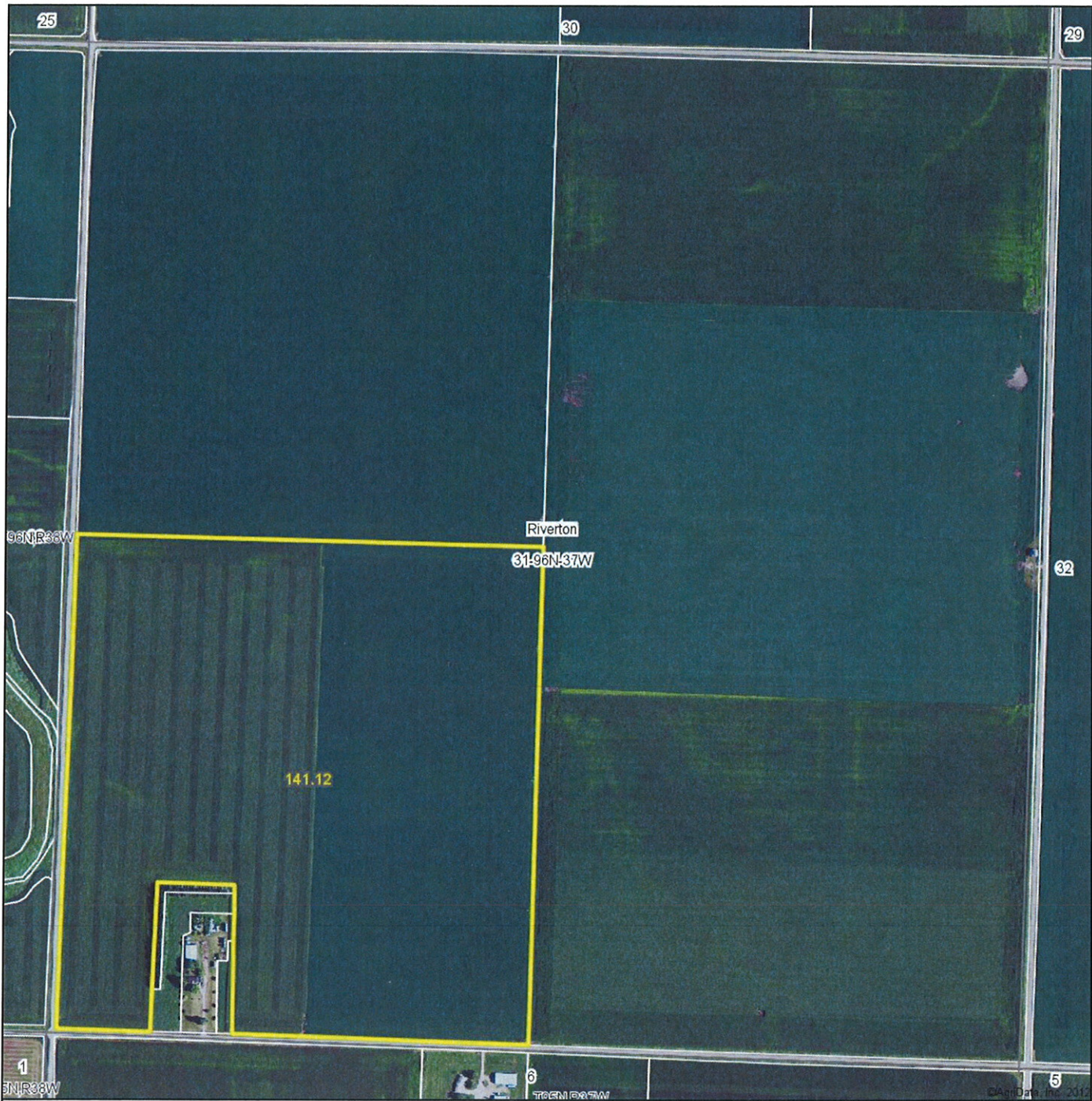


# Aerial Map



MIDWEST LAND  
712-262-3110 MANAGEMENT

Maps provided by:



©AgriData, Inc. 2012

[www.AgriDataInc.com](http://www.AgriDataInc.com)

31-96N-37W  
Clay County  
Iowa

map center: 43° 5' 27.53, 95° 15' 35.96

scale: 8705

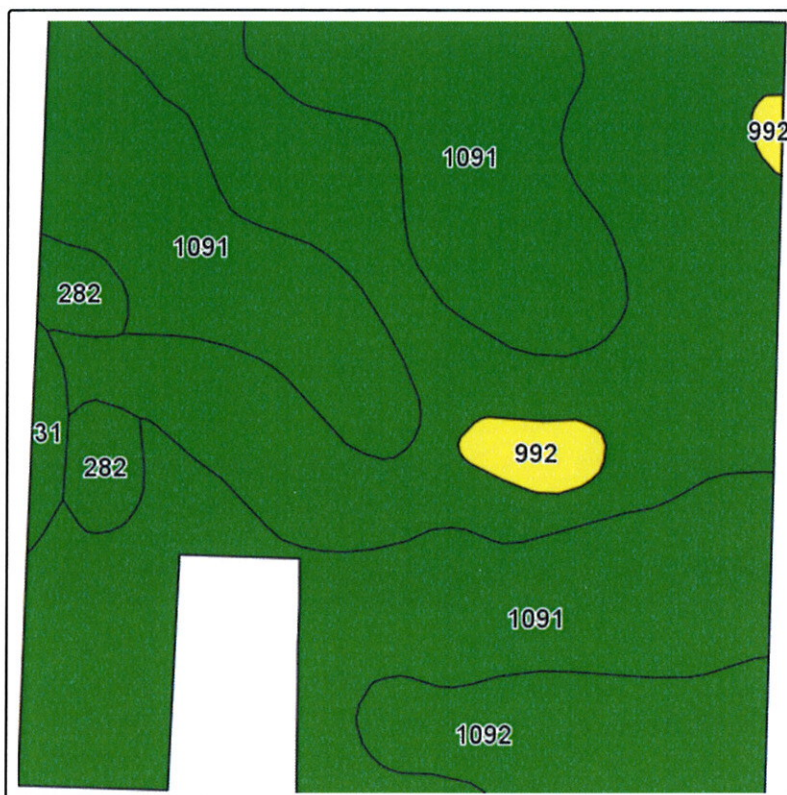


8/27/2012

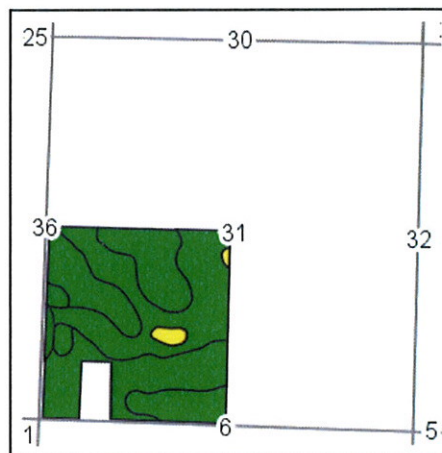
Field borders provided by Farm Service Agency as of 5/21/2008. Aerial photography provided by Aerial Photography Field Office.



## Soils Map



Field borders provided by Farm Service Agency as of 5/21/2008.  
Soils data provided by USDA and NRCS.



State: Iowa  
County: Clay  
Location: 31-96N-37W  
Township: Riverton  
Acres: 141.1  
Date: 8/27/2012

& REAL ESTATE, INC.  
**MIDWEST LAND**  
712-262-3110 MANAGEMENT



Maps provided by:



©AgriData, Inc 2012  
www.AgriDataInc.com

Code	Soil Description	Acres	Percent of field	CSR Legend	Non-Irr Class	CSR* 1/21/12	CSR(2)**
1091	McCreath silty clay loam, 0 to 2 percent slopes	69.9	49.6%		I	83	84
1092	Gillett Grove silty clay loam, 0 to 2 percent slopes	62.8	44.5%		IIw	78	84
282	Ransom silty clay loam, 1 to 3 percent slopes	4.1	2.9%		I	81	82
992	Gillett Grove silty clay loam, depressionnal, 0 to 1 percent slopes	2.7	1.9%		IIIw	58	67
31	Afton silty clay loam, 0 to 2 percent slopes	1.6	1.1%		IIw	75	71
Weighted Average						80.2	83.5

\*CSR ratings as of 1/21/2012 will be available for a limited time to aid in the transition to CSR2.

\*\*These values could be either CSR or CSR2 as counties are updated during this transition.

For more information on the new CSR2 rating visit [http://www.ucs.iastate.edu/mnet/\\_repository/2012/soilmanagement/pdf/Burras.pdf](http://www.ucs.iastate.edu/mnet/_repository/2012/soilmanagement/pdf/Burras.pdf)



# DRAINAGE DISTRICT NO. 74

31

WP

6

10

12

6

12

15

14

