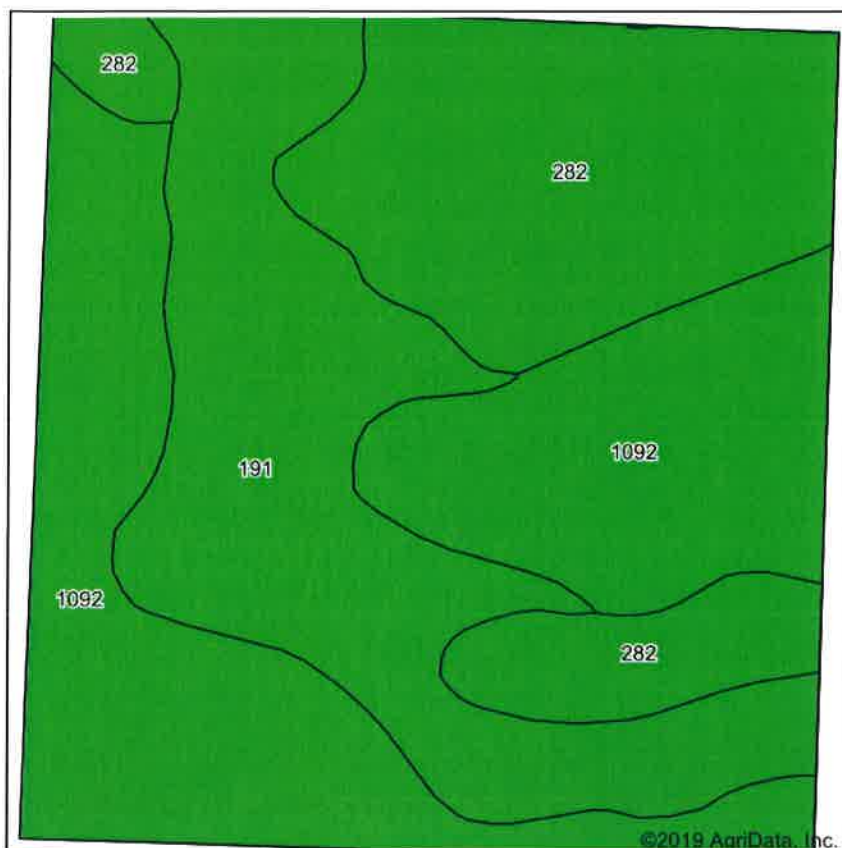
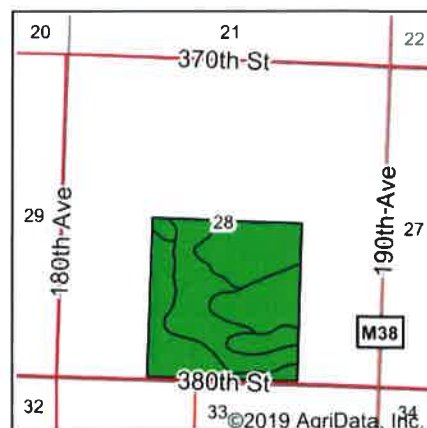


Soils Map



Soils data provided by USDA and NRCS.



State: **Iowa**
 County: **Clay**
 Location: **28-96N-37W**
 Township: **Riverton**
 Acres: **147.2**
 Date: **12/6/2019**

& REAL ESTATE, INC.
MIDWEST LAND
 MANAGEMENT
 712-262-3110

Maps Provided By

 CUSTOMIZED ONLINE MAPPING

© AgriData, Inc. 2019 www.AgrDataInc.com

Area Symbol: IA041, Soil Area Version: 29

Code	Soil Description	Acres	Percent of field	CSR2 Legend	Non-Irr Class *c	CSR2**	CSR
1092	Gillett Grove silty clay loam, 0 to 2 percent slopes	59.40	40.4%		llw	94	78
282	Ransom silty clay loam, 1 to 3 percent slopes	44.02	29.9%		lw	95	81
191	Rushmore silty clay loam, 0 to 2 percent slopes	43.78	29.7%		llw	95	76
Weighted Average						94.6	78.3

**IA has updated the CSR values for each county to CSR2.

*c: Using Capabilities Class Dominant Condition Aggregation Method

Soils data provided by USDA and NRCS.