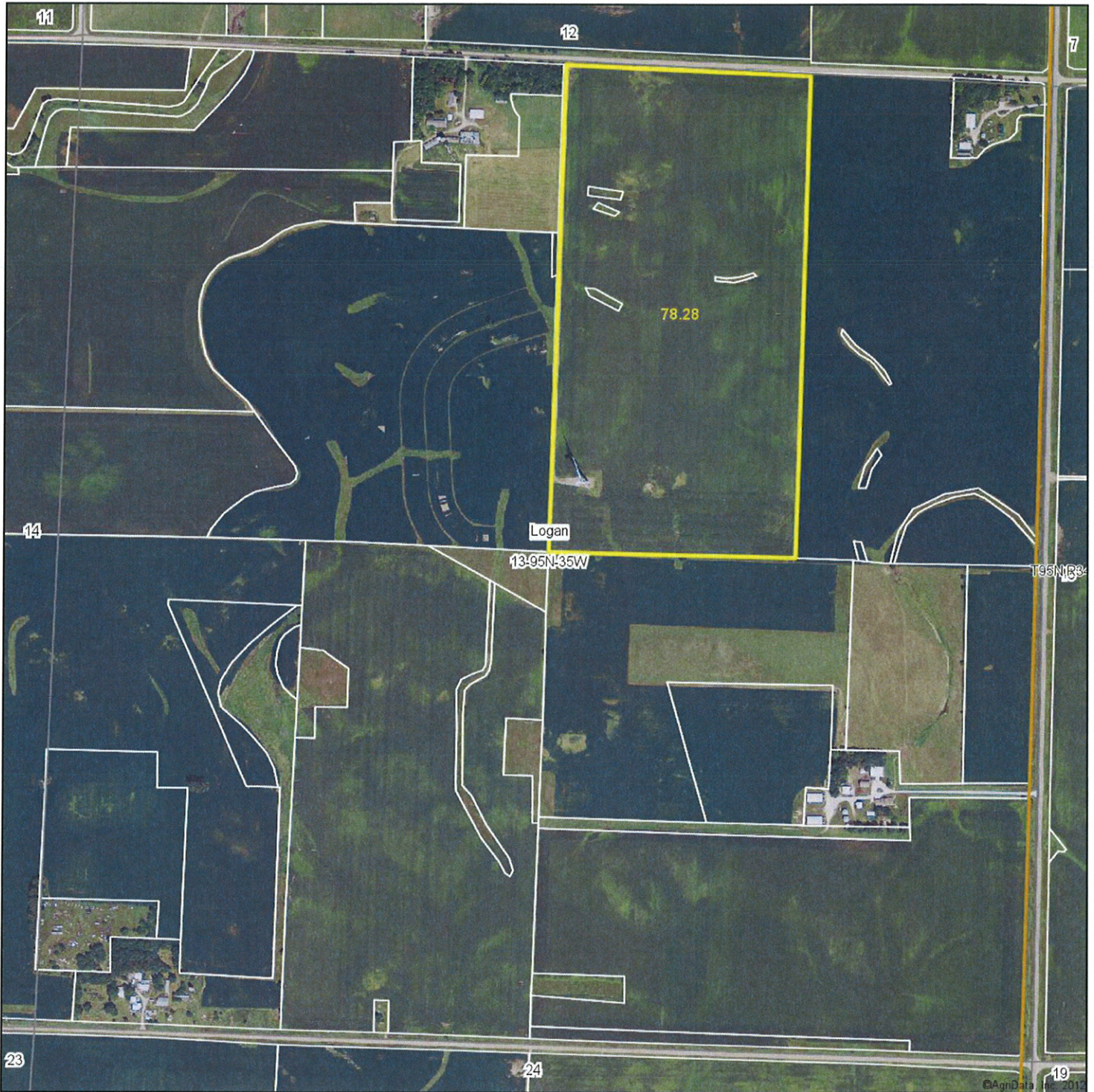


Parcel A  
Aerial Map



& REAL ESTATE, INC.  
**MIDWEST LAND**  
712-262-3110 MANAGEMENT

Maps provided by:



©AgriData, Inc. 2012  
www.AgriDataInc.com

**13-95N-35W**  
**Clay County**  
**Iowa**

map center: 43° 2' 47.55, 94° 55' 25.27  
scale: 8777

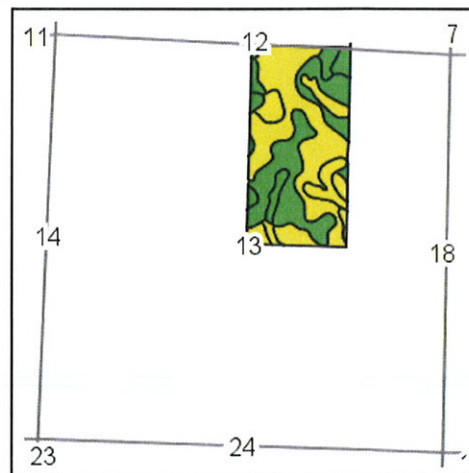
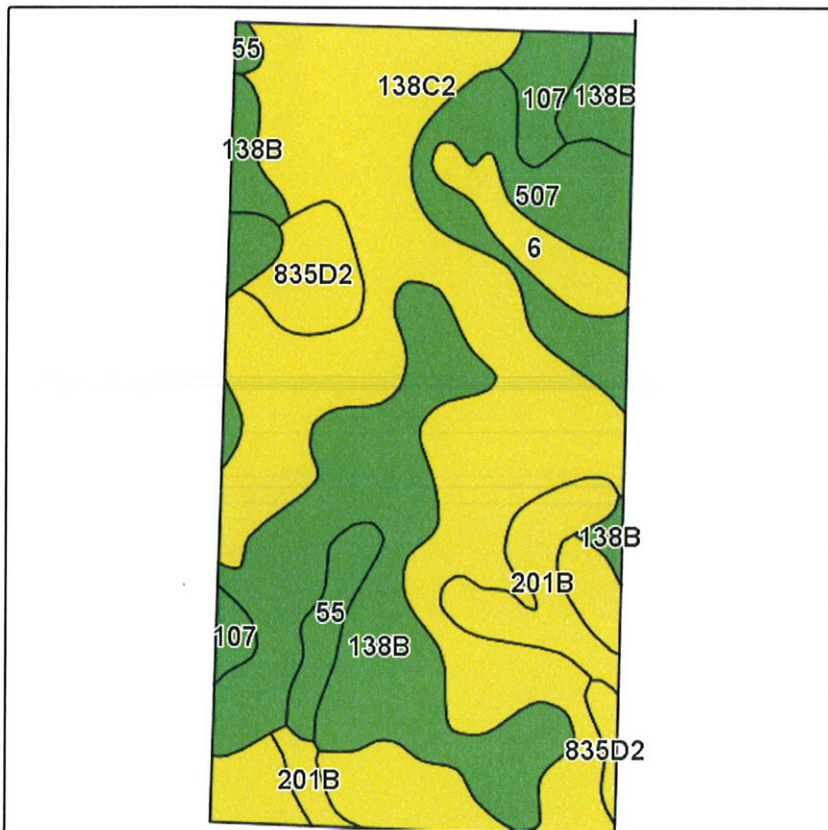


3/7/2013

Field borders provided by Farm Service Agency as of 5/21/2008. Aerial photography provided by Aerial Photography Field Office.



Parcel A  
**Soils Map-CSR(as of 1/21/12)**



State: **Iowa**  
County: **Clay**  
Location: **13-95N-35W**  
Township: **Logan**  
Acres: **78.8**  
Date: **3/7/2013**

& REAL ESTATE, INC.  
**MIDWEST LAND**  
712-262-3110 MANAGEMENT

Field borders provided by Farm Service Agency as of 5/21/2008.  
Soils data provided by USDA and NRCS.



Maps provided by:



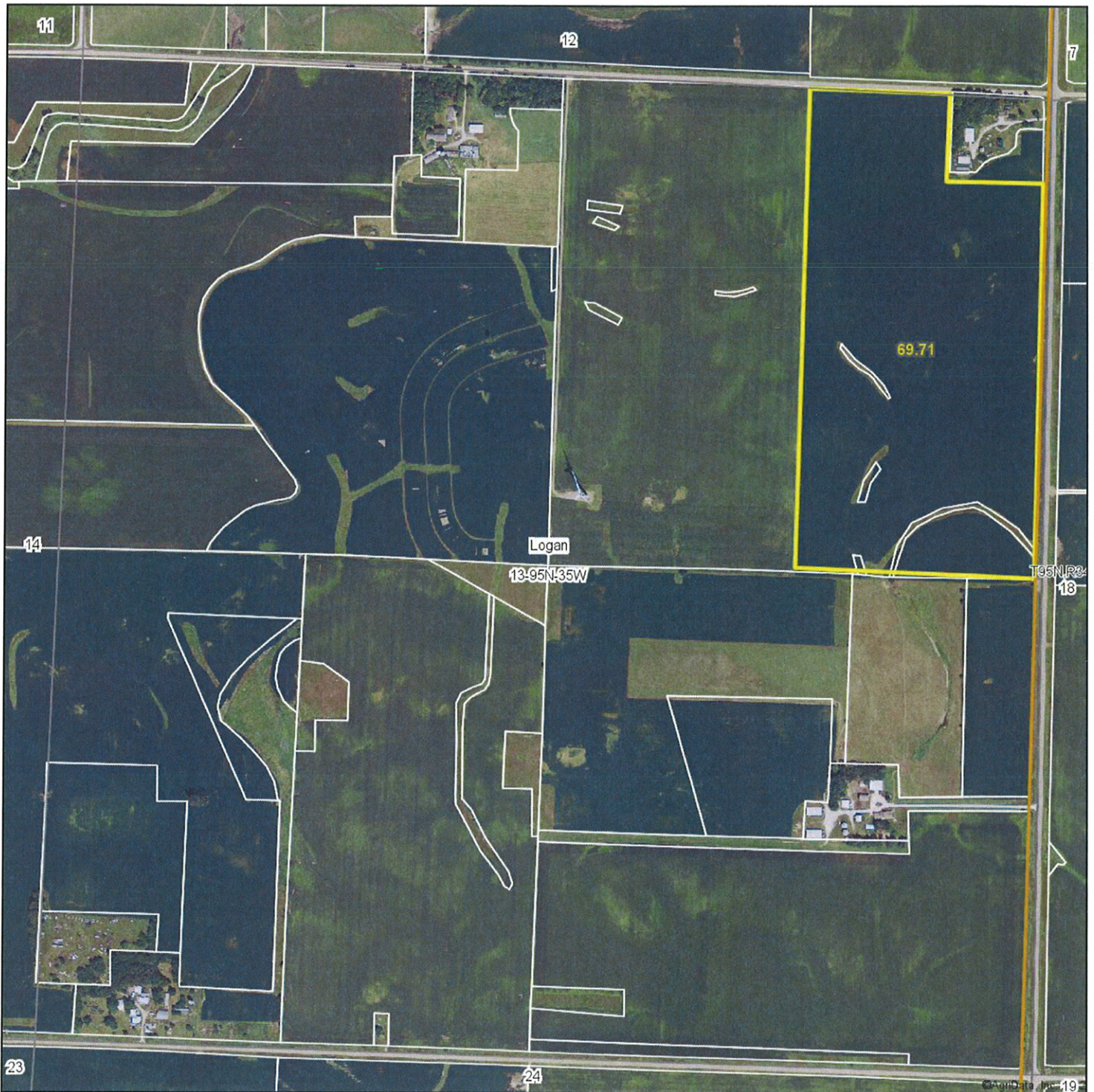
Code	Soil Description	Acres	Percent of field	CSR Legend	Non-Irr Class	CSR*	Corn	Soybeans
138C2	Clarion loam, 5 to 9 percent slopes, moderately eroded	36	45.7%		IIIe	59	165	39
138B	Clarion loam, 2 to 5 percent slopes	19.8	25.2%		Ile	74	185	42
507	Canisteo clay loam, 0 to 2 percent slopes	7	8.9%		IIw	73	184	41
201B	Coland-Terril complex, 2 to 5 percent slopes	4.6	5.8%		Ile	51	154	39
107	Webster silty clay loam, 0 to 2 percent slopes	3.5	4.4%		IIw	77	189	42
835D2	Storden-Omsrud complex, 9 to 14 percent slopes, moderately eroded	3.2	4.0%		IIIe	46	147	38
6	Okoboji silty clay loam, depressional, 0 to 1 percent slopes	2.5	3.2%		IIIw	55	159	35
55	Nicollet loam, 1 to 3 percent slopes	2.2	2.8%		I	82	196	45
<b>Weighted Average</b>						<b>64.4</b>	<b>172.1</b>	<b>40.1</b>

Note: ALL soils information on this page is dated 1/21/2012

\*CSR ratings will be available for a limited time to aid in the transition to CSR2.



Parcel B  
Aerial Map



MIDWEST LAND  
712-262-3110 MANAGEMENT

Maps provided by:



©AgriData, Inc. 2012  
www.AgriDataInc.com

13-95N-35W  
Clay County  
Iowa

map center: 43° 2' 48.22, 94° 55' 25.29  
scale: 8777

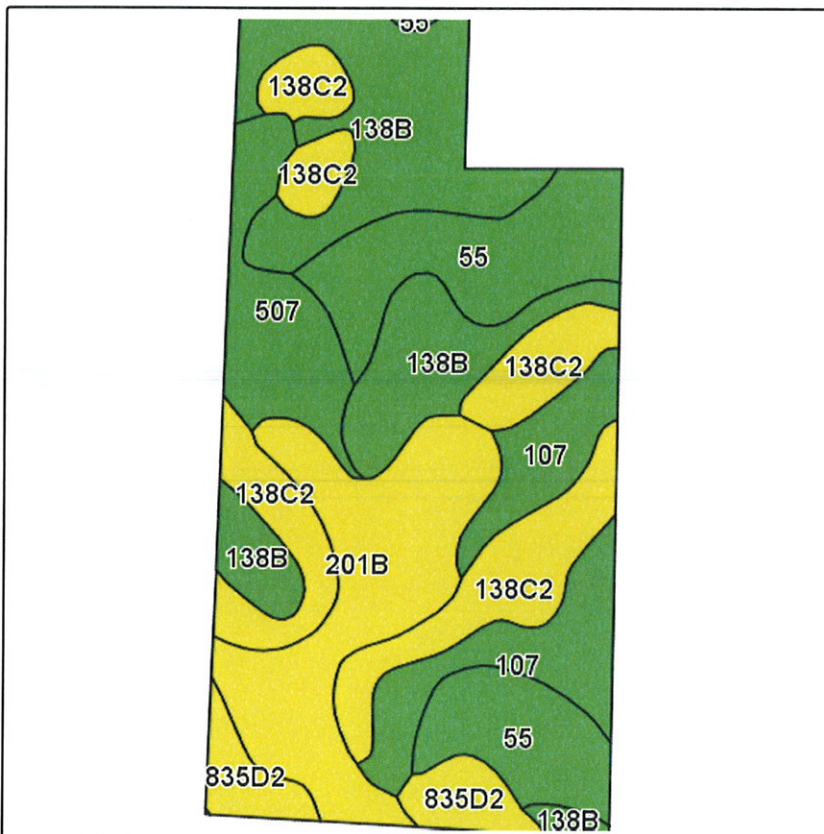


3/7/2013

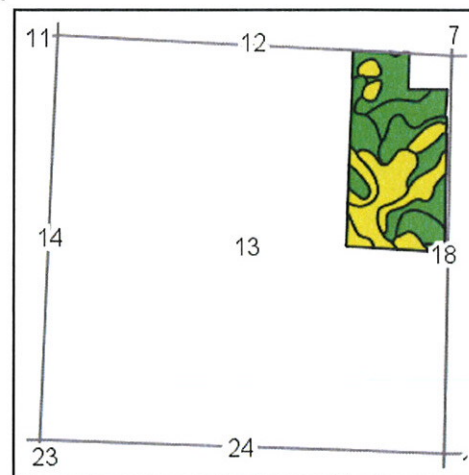
Field borders provided by Farm Service Agency as of 5/21/2008. Aerial photography provided by Aerial Photography Field Office.



Parcel B  
Soils Map-CSR(as of 1/21/12)



Field borders provided by Farm Service Agency as of 5/21/2008.  
Soils data provided by USDA and NRCS.



State: **Iowa**  
County: **Clay**  
Location: **13-95N-35W**  
Township: **Logan**  
Acres: **69.1**  
Date: **3/7/2013**

& REAL ESTATE, INC  
**MIDWEST LAND**  
712-262-3110 MANAGEMENT



Maps provided by:



©AgriData, Inc 2012  
www.AgriDataInc.com

Code	Soil Description	Acres	Percent of field	CSR Legend	Non-Irr Class	CSR*	Corn	Soybeans
138B	Clarion loam, 2 to 5 percent slopes	16	23.2%		Ile	74	185	42
138C2	Clarion loam, 5 to 9 percent slopes, moderately eroded	13	18.8%		Ille	59	165	39
55	Nicollet loam, 1 to 3 percent slopes	12	17.3%		I	82	196	45
201B	Coland-Terril complex, 2 to 5 percent slopes	11.6	16.8%		Ile	51	154	39
107	Webster silty clay loam, 0 to 2 percent slopes	7.8	11.3%		Ilw	77	189	42
507	Canisteo clay loam, 0 to 2 percent slopes	5.4	7.7%		Ilw	73	184	41
835D2	Storden-Omsrud complex, 9 to 14 percent slopes, moderately eroded	3.3	4.8%		Ille	46	147	38
<b>Weighted Average</b>						<b>67.5</b>	<b>176.3</b>	<b>41.1</b>

Note: ALL soils information on this page is dated 1/21/2012

\*CSR ratings will be available for a limited time to aid in the transition to CSR2.