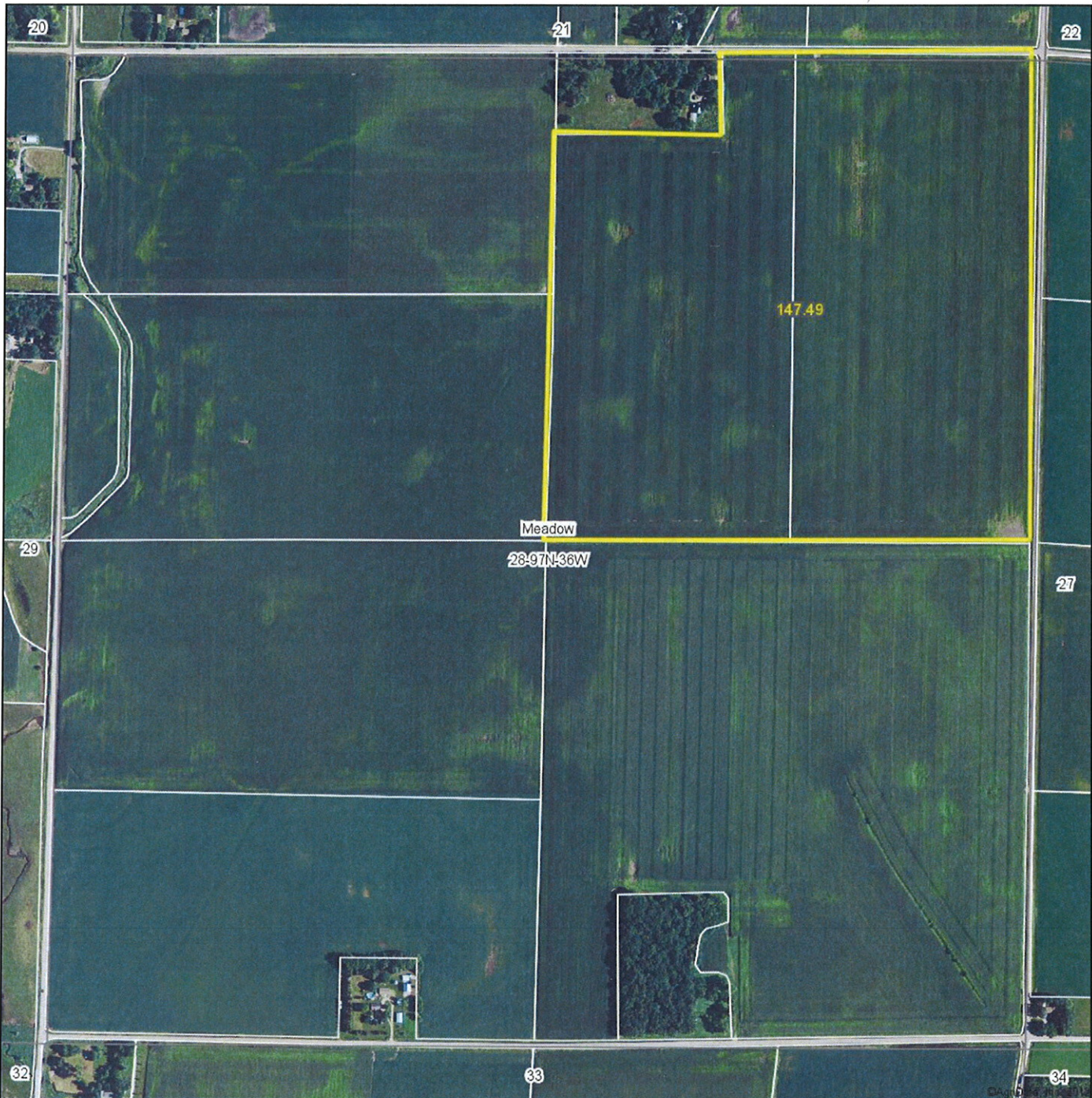


Aerial Map



REAL ESTATE, INC
Midwest Land
712-262-3110 MANAGEMENT

Maps provided by:



©AgriData, Inc. 2012

www.AgriDataInc.com

28-97N-36W
Clay County
Iowa

map center: 43° 11' 27.54, 95° 6' 5.06

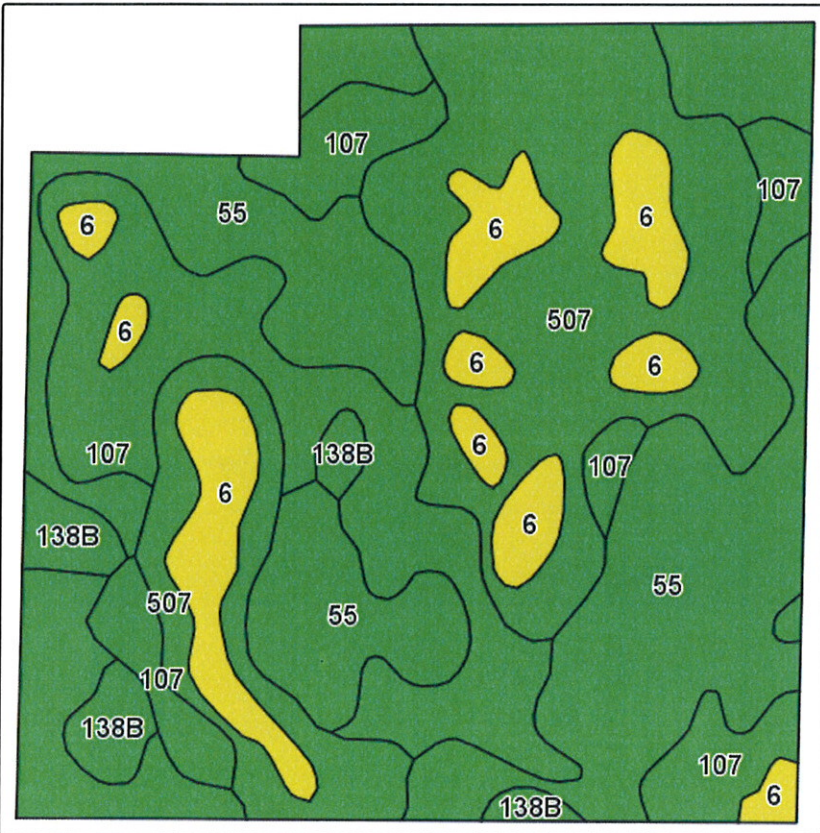
scale: 8873



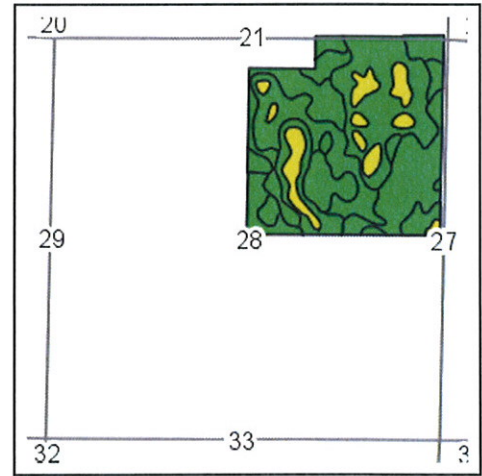
9/4/2012

Field borders provided by Farm Service Agency as of 5/21/2008. Aerial photography provided by Aerial Photography Field Office.

Soils Map-CSR2



Field borders provided by Farm Service Agency as of 5/21/2008.
Soils data provided by USDA and NRCS.



State: **Iowa**
County: **Clay**
Location: **28-97N-36W**
Township: **Meadow**
Acres: **147.6**
Date: **9/5/2012**

MIDWEST LAND
MANAGEMENT
712-262-3110



Maps provided by:



Code	Soil Description	Acres	Percent of field	CSR Legend	Non-Irr Class	CSR2**
55	Nicollet loam, 1 to 3 percent slopes	52.6	35.7%		I	74
507	Canisteo clay loam, 0 to 2 percent slopes	40.3	27.3%		IIw	72
107	Webster silty clay loam, 0 to 2 percent slopes	33.6	22.7%		IIw	75
6	Okoboji silty clay loam, depressional, 0 to 1 percent slopes	16.1	10.9%		IIIw	46
138B	Clarion loam, 2 to 5 percent slopes	5	3.4%		Ile	75
Weighted Average						70.7

**These values could be either CSR or CSR2 until updates are completed by October 1, 2012. To confirm value status, run a CSR map and compare values. If they are identical to the CSR2 map, the map reflects CSR values, if they are different, the map reflects CSR2 values



6

6

6

10

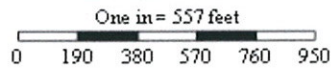
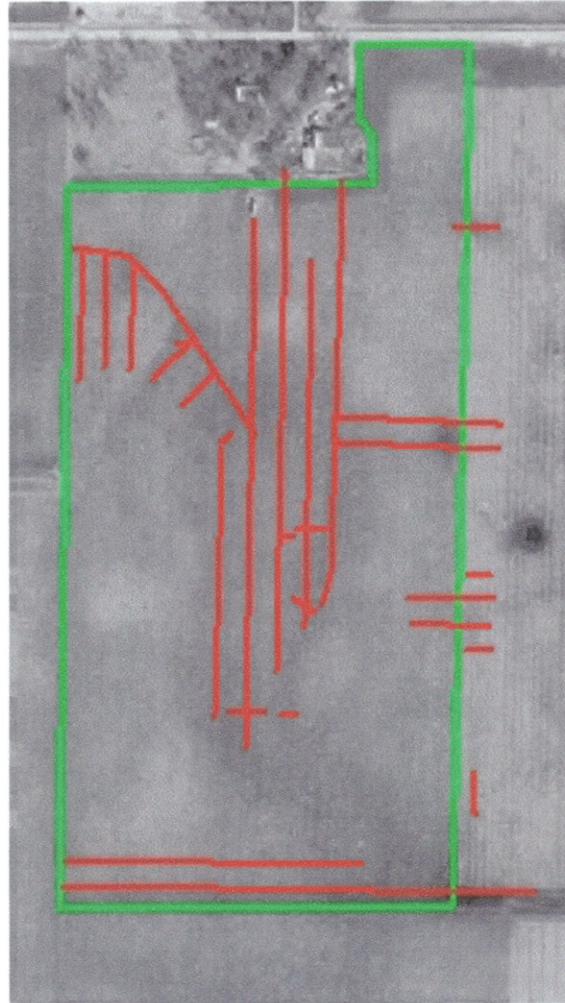
12

County
Tile


28

14

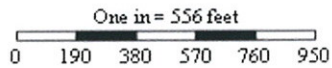
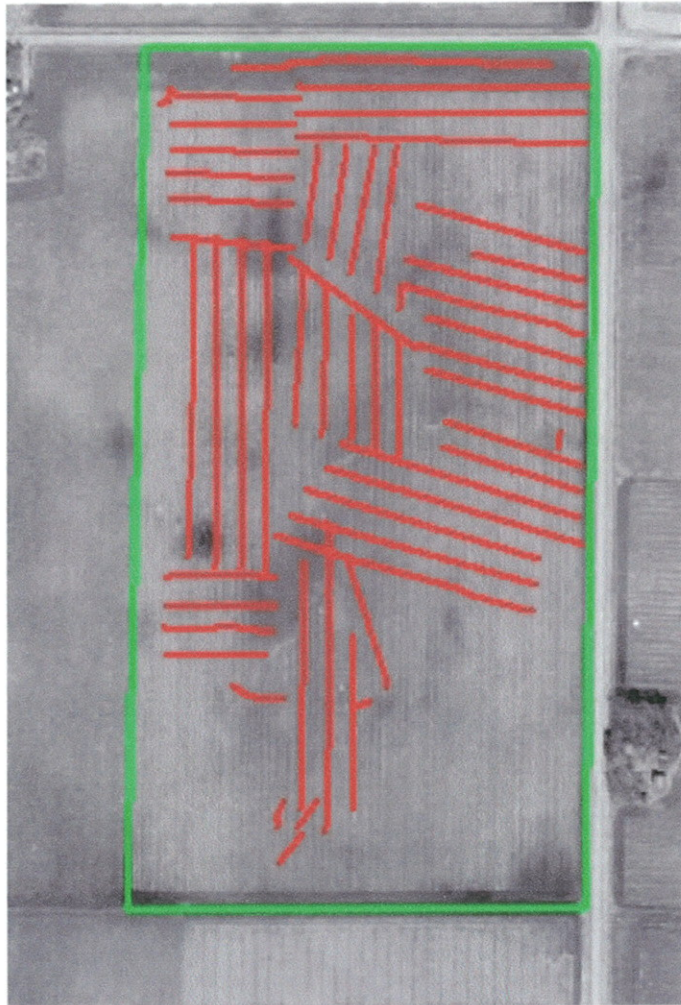
Drainage-Tile Lines




Date: 4/14/2005
Field: Chamberlin Farm
Farm: Meadow 28
Client: Pothast, Grant
Area: 63.87 ac

Line Function	
	Lateral 13,523 feet

Drainage-Tile Lines



Date: 4/3/2005
Field: Grants
Farm: Meadow 28
Client: Pothast, Grant
Area: 82.73 ac

Line Function	
	Lateral 27,143 feet