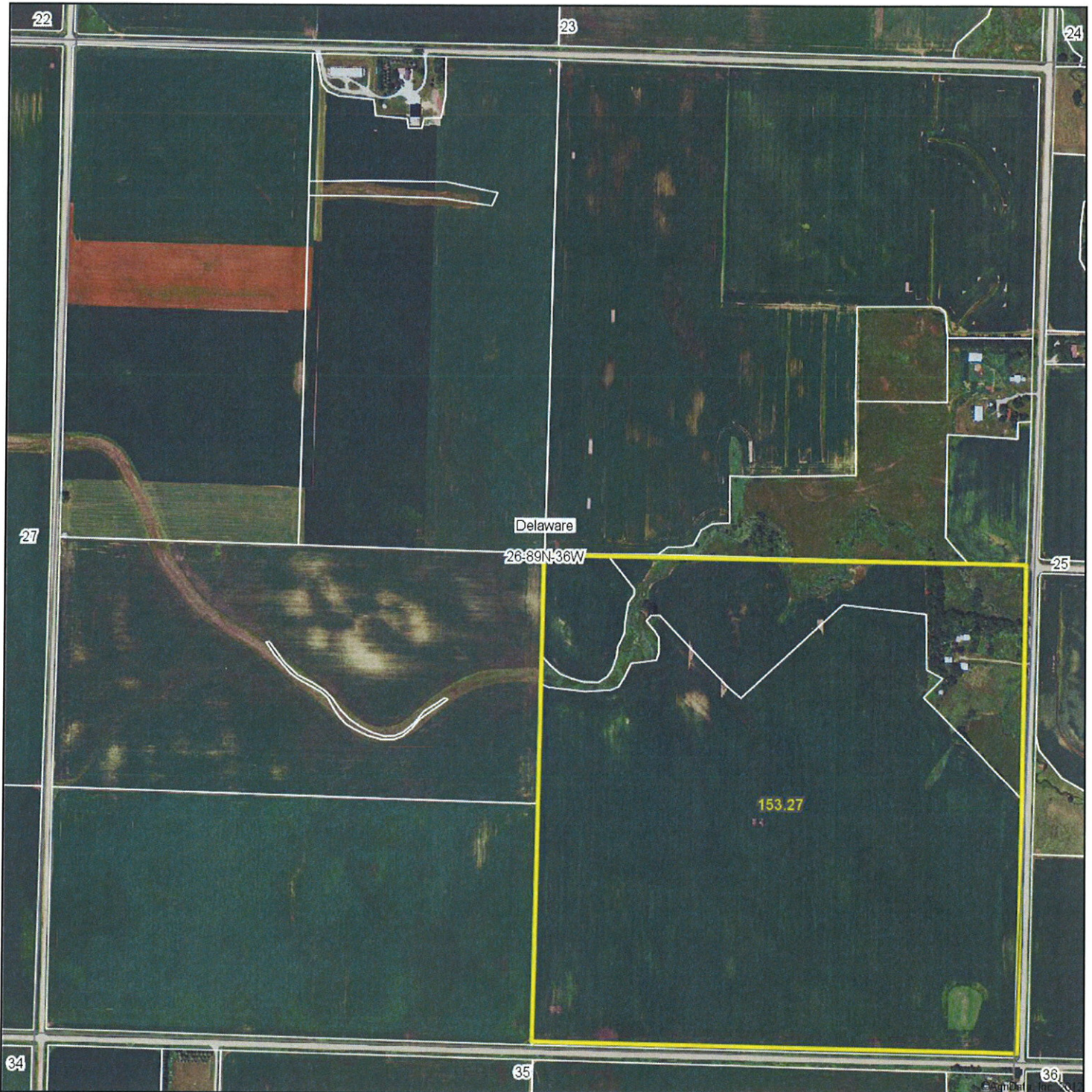


Aerial Map



MIDWEST LAND
712-262-3110 MANAGEMENT

Maps provided by:



©AgriData, Inc. 2012

www.AgriDataInc.com

26-89N-36W
Sac County
Iowa

map center: 42° 29' 46.66, 95° 3' 43.68

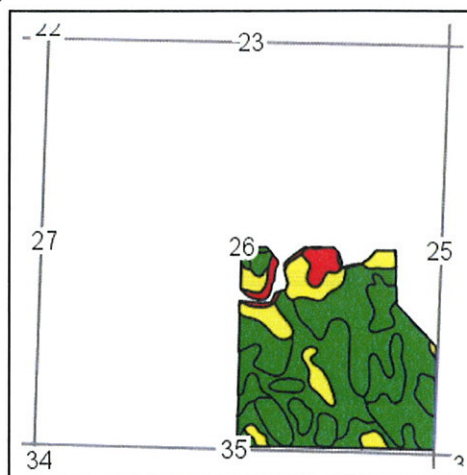
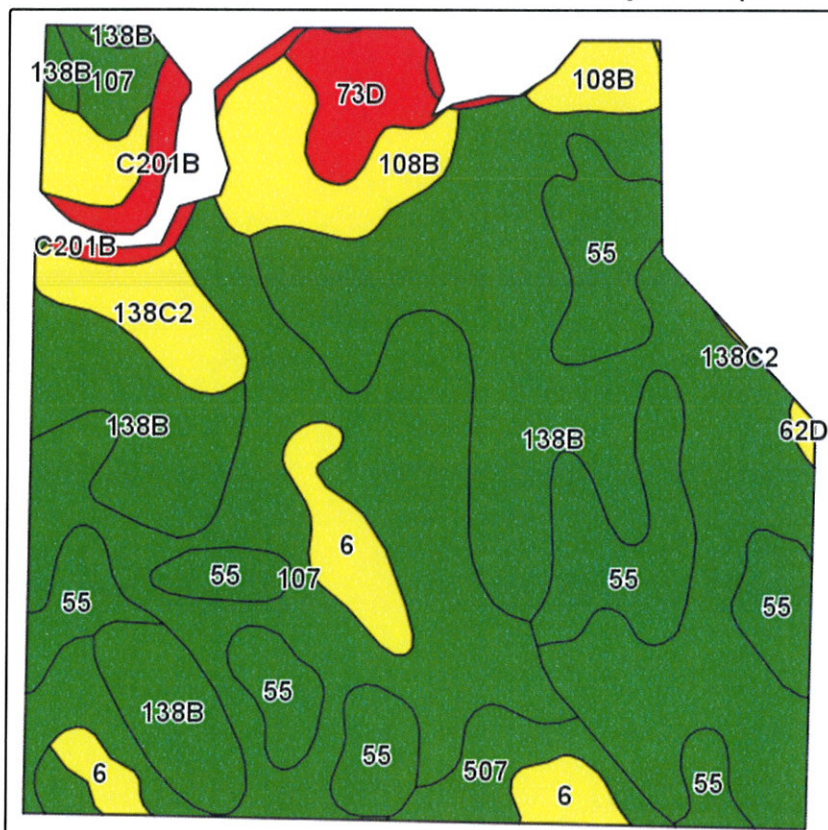
scale: 8728



4/16/2013

Field borders provided by Farm Service Agency as of 5/21/2008. Aerial photography provided by Aerial Photography Field Office.

Soils Map-CSR(as of 1/21/12)



State: Iowa
 County: Sac
 Location: 26-89N-36W
 Township: Delaware
 Acres: 136
 Date: 4/12/2013

& REAL ESTATE, INC
MIDWEST LAND
 712-262-3110 MANAGEMENT



Maps provided by:



©AgriData, Inc 2012
 www.AgriDataInc.com

Field borders provided by Farm Service Agency as of 5/21/2008.
 Soils data provided by USDA and NRCS.

Code	Soil Description	Acres	Percent of field	CSR Legend	Non-Irr Class	CSR*	Corn	Soybeans
138B	Clarion loam, 2 to 5 percent slopes	50.7	37.3%		Ile	77	188	44
107	Webster silty clay loam, 0 to 2 percent slopes	32.7	24.1%		IIw	80	192	44
55	Nicollet loam, 1 to 3 percent slopes	21.9	16.1%		I	85	199	47
108B	Wadena loam, 24 to 32 inches to sand and gravel, 2 to 5 percent slopes	7.8	5.7%		Ile	49	150	30
138C2	Clarion loam, 5 to 9 percent slopes, moderately eroded	6.1	4.5%		IIIle	61	166	41
6	Okoboji silty clay loam, 0 to 1 percent slopes	5.7	4.2%		IIIw	55	158	35
507	Canisteo silty clay loam, 0 to 2 percent slopes	4.1	3.0%		IIw	75	185	42
73D	Salida gravelly loamy sand, 9 to 14 percent slopes	3.9	2.9%		IVe	5	91	17
C201B	Coland-Spillville complex, channeled, 2 to 5 percent slopes	2.8	2.1%		IVe	25		
62D	Storden loam, 9 to 14 percent slopes	0.3	0.2%		IIIle	40	138	33
Weighted Average						72.5	179.6	41.4

Note: ALL soils information on this page is dated 1/21/2012

*CSR ratings will be available for a limited time to aid in the transition to CSR2.