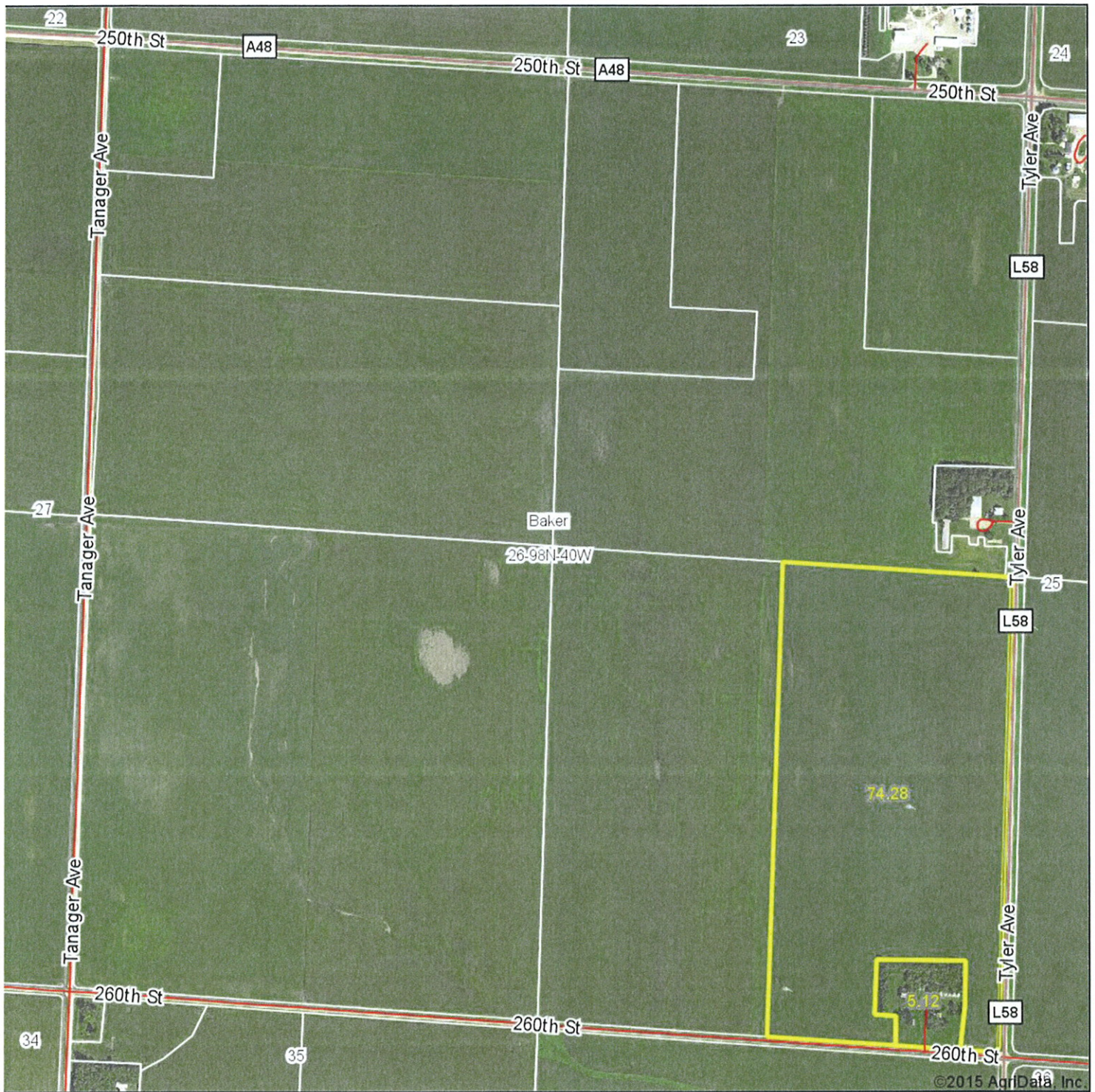


Aerial Map



©2015 AgriData, Inc.

MIDWEST LAND
MANAGEMENT
712-262-3110

map center: 43° 16' 41.97, 95° 32' 7.95

0ft 869ft 1739ft

26-98N-40W
Osceola County
Iowa

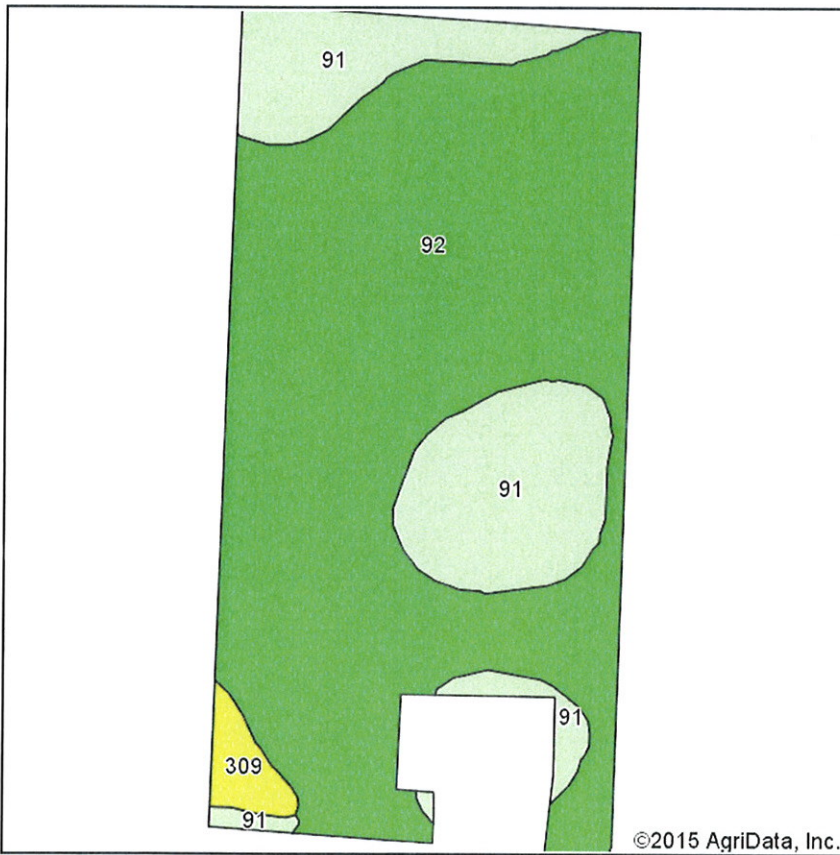
Maps Provided By:
surety
CUSTOMIZED ONLINE MAPPING
© AgriData, Inc. 2015 www.AgrDataInc.com



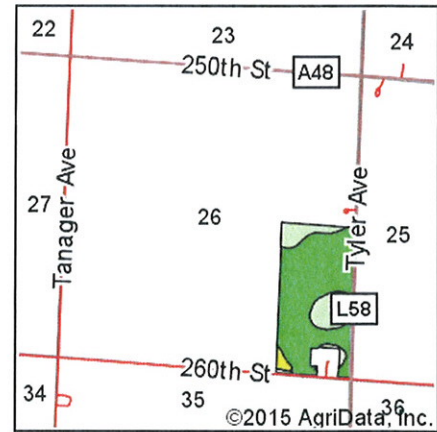
11/18/2015

Field borders provided by Farm Service Agency as of 5/21/2008.

Soils Map-CSR2



Soils data provided by USDA and NRCS.



State: **Iowa**
 County: **Osceola**
 Location: **26-98N-40W**
 Township: **Baker**
 Acres: **74.28**
 Date: **11/18/2015**

& REAL ESTATE, INC.
MIDWEST LAND
 712-262-3110 MANAGEMENT

Maps Provided By:

 CUSTOMIZED ONLINE MAPPING
 © AgriData, Inc. 2015 www.AgridataInc.com



Area Symbol: IA143, Soil Area Version: 24

| Code | Soil Description | Acres | Percent of field | CSR2 Legend | Non-Irr Class *c | CSR2** | CSR |
|------------------|--|-------|------------------|-------------|------------------|--------|------|
| 92 | Marcus silty clay loam, 0 to 2 percent slopes | 56.22 | 75.7% | | IIw | 94 | 80 |
| 91 | Primghar silty clay loam, 0 to 2 percent slopes | 16.51 | 22.2% | | Iw | 100 | 86 |
| 309 | Allendorf silty clay loam, 0 to 2 percent slopes | 1.55 | 2.1% | | IIIs | 63 | 46 |
| Weighted Average | | | | | | 94.7 | 80.6 |

Area Symbol: IA143, Soil Area Version: 24

*IA has updated the CSR values for each county to CSR2.

c: Using Capabilities Class Dominant Condition Aggregation Method

Soils data provided by USDA and NRCS.