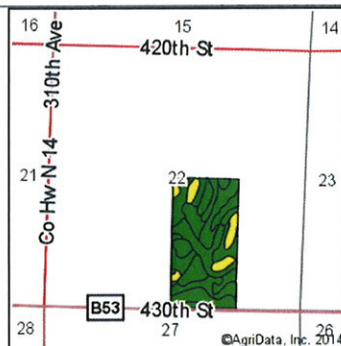
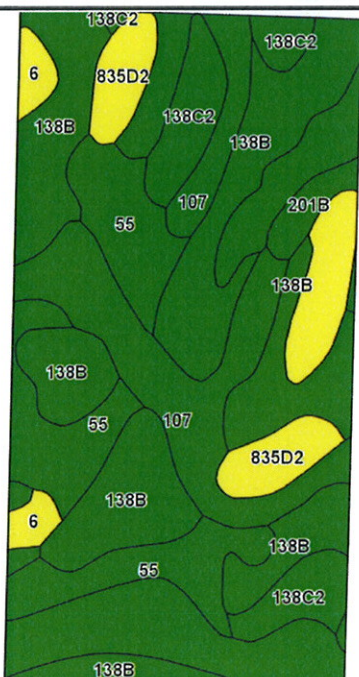


Soils Map-CSR2

Soils Version
latest



State: **Iowa**
 County: **Clay**
 Location: **22-95N-35W**
 Township: **Logan**
 Acres: **80.15**
 Date: **6/4/2014**



Maps Provided By:
surety
 CUSTOMIZED ONLINE MAPPING
 © AgriData, Inc. 2014 www.AgriDataInc.com

Soils data provided by USDA and NRCS.

©AgriData, Inc. 2014

Area Symbol: IA041, Soil Area Version: 20							
Code	Soil Description	Acres	Percent of field	**CSR2 Legend	Non-Irr Class	CSR2**	CSR
138B	Clarion loam, 2 to 6 percent slopes	27.10	33.8%		Ile	90	74
107	Webster silty clay loam, 0 to 2 percent slopes	21.27	26.5%		Ilw	89	77
55	Nicollet loam, 1 to 3 percent slopes	12.50	15.6%		I	88	82
138C2	Clarion loam, 5 to 9 percent slopes, moderately eroded	9.16	11.4%		Ille	83	59
835D2	Storden-Omsrud complex, 9 to 14 percent slopes, moderately eroded	7.06	8.8%		Ille	43	46
6	Okoboji silty clay loam, depressional, 0 to 1 percent slopes	1.68	2.1%		Illw	56	55
201B	Coland-Terril complex, 2 to 5 percent slopes	1.38	1.7%		Ile	81	51
Weighted Average						83.6	71.1

**IA has updated the CSR values for each county to CSR2.

Field borders provided by Farm Service Agency as of 5/21/2008. Aerial photography provided by Aerial Photography Field Office.