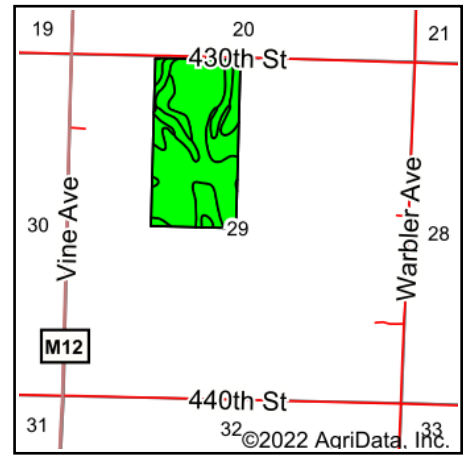
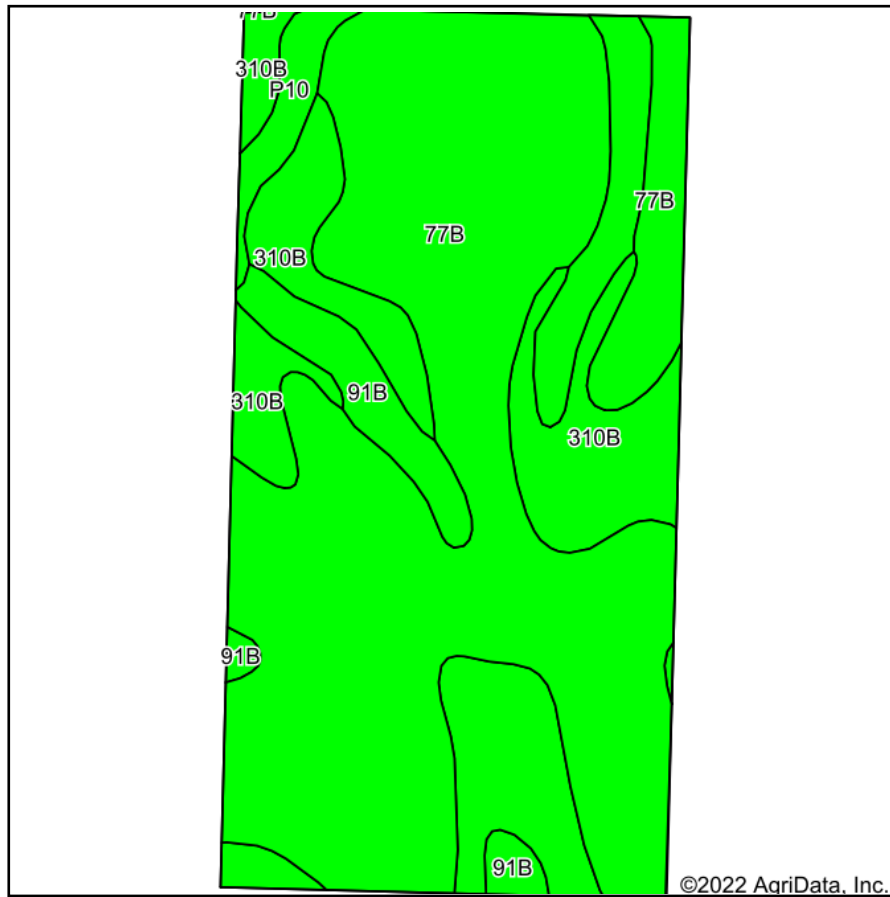


# Soils Map



State: **Iowa**  
 County: **O'Brien**  
 Location: **29-95N-39W**  
 Township: **Grant**  
 Acres: **79.01**  
 Date: **6/9/2022**

**MIDWEST LAND** & REAL ESTATE, INC.  
 712-262-3110 MANAGEMENT  
 Maps Provided By:  
**surety**  
 CUSTOMIZED ONLINE MAPPING  
 © AgriData, Inc. 2021 www.AgriDataInc.com

Area Symbol: IA141, Soil Area Version: 26

Code	Soil Description	Acres	Percent of field	CSR2 Legend	CSR2**	CSR
77B	Sac silty clay loam, loam substratum, 2 to 5 percent slopes	52.24	66.1%		95	68
310B	Galva silty clay loam, 2 to 5 percent slopes	17.62	22.3%		95	70
91B	Primghar silty clay loam, 2 to 5 percent slopes	7.37	9.3%		95	78
P10	Afton silty clay loam, Sheldon creek formation, 0 to 2 percent slopes, occasionally flooded	1.78	2.3%		82	
Weighted Average					94.7	*-

\*\*IA has updated the CSR values for each county to CSR2.

\*- CSR weighted average cannot be calculated on the current soils data, use prior data version for csr values.

Soils data provided by USDA and NRCS.