

Midwest Land Management

LAND

FOR SALE

4519 310th Street, Emmetsburg, Iowa



Located 2½ miles east and 3 miles south of Graettinger, Iowa this acreage features:

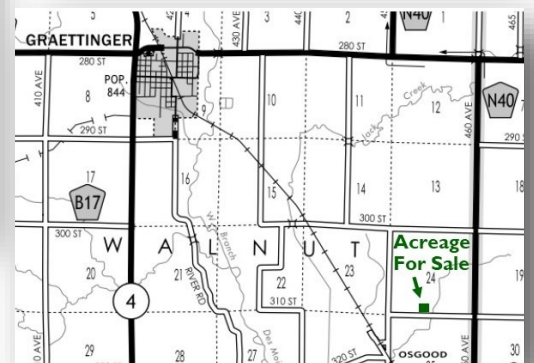
- ♦ 3 Acres m/l
- ♦ 1,728 sq. ft., 2 story home
- ♦ 3 bedrooms, 1 bath
- ♦ Original oak floors
- ♦ Original woodwork
- ♦ 40' x 80' utility building



Real Estate Taxes: \$268 (estimated)

School District: Graettinger-Terril
Community School District

**For additional photos
visit our website,
www.midwestlandmanagement.com!**



Broker's Note: Here is an excellent opportunity to own a smaller acreage. Located near Graettinger, the Smith acreage features a mature grove of trees, steel utility building and an older 2 story home that would make a great project for the do-it-yourself handyman.

Price: \$95,000

Louise Smith, Owner

Contact Zach Anderson for a private showing • 712-298-1606

Midwest Land Management and Real Estate, Inc.

2506 11th Avenue SW. • PO Box 909

Spencer, IA 51301

712-262-3110 • 800-952-2974

www.midwestlandmanagement.com

MIDWEST LAND
MANAGEMENT & REAL ESTATE, INC

Property information provided was obtained from sources deemed reliable, but the Broker or Seller makes no guarantees as to its accuracy. All prospective buyers are urged to fully inspect the property, its conditions and to rely on their own conclusions. All sketches, dimensions and acreage figures in this information are approximate or "more or less".