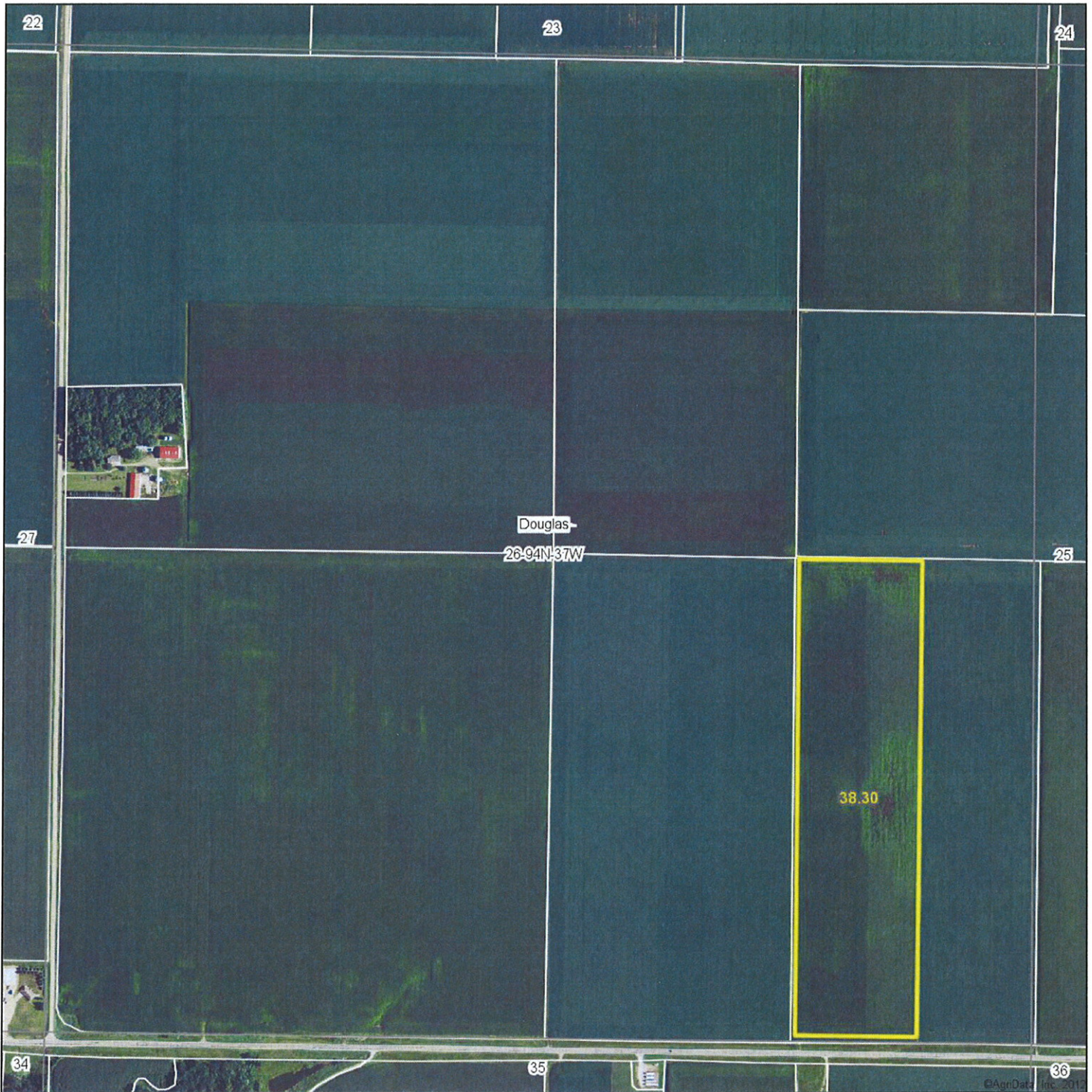


Aerial Map



& REAL ESTATE, INC.
MIDWEST LAND
712-262-3110 MANAGEMENT

26-94N-37W
Clay County
Iowa

map center: 42° 55' 53.7, 95° 10' 52.52
scale: 8817

Maps provided by:



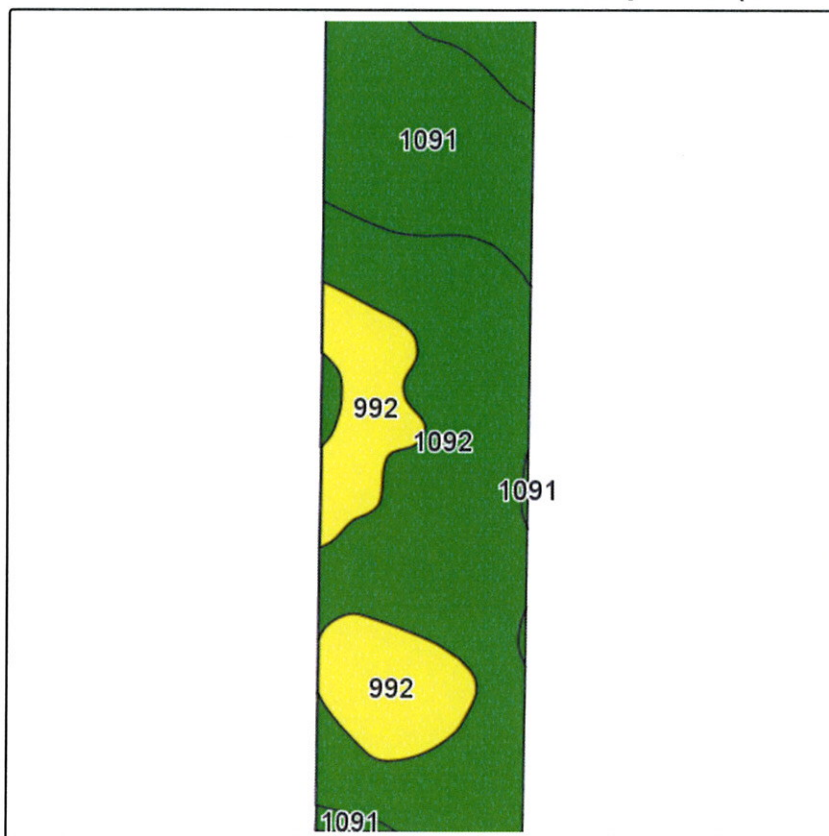
©AgriData, Inc. 2012
www.AgriDataInc.com



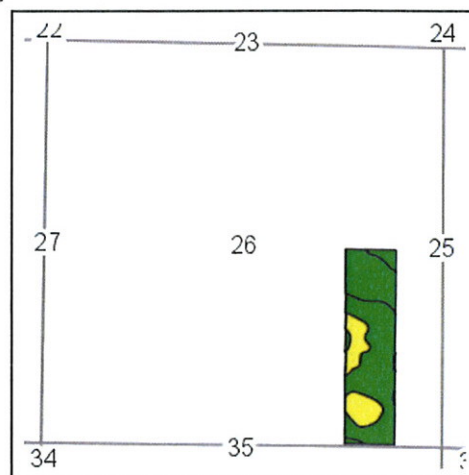
11/21/2012

Field borders provided by Farm Service Agency as of 5/21/2008. Aerial photography provided by Aerial Photography Field Office.

Soils Map-CSR(as of 1/21/12)



Field borders provided by Farm Service Agency as of 5/21/2008.
Soils data provided by USDA and NRCS.



State: **Iowa**
County: **Clay**
Location: **26-94N-37W**
Township: **Douglas**
Acres: **38.3**
Date: **11/21/2012**

& REAL ESTATE, INC
MIDWEST LAND
712-262-3110 MANAGEMENT



Maps provided by:



©AgriData, Inc 2012
www.AgriDataInc.com

Code	Soil Description	Acres	Percent of field	CSR Legend	Non-Irr Class	CSR*	Corn	Soybeans
1092	Gillett Grove silty clay loam, 0 to 2 percent slopes	21.2	55.4%		IIw	78	190	53
1091	McCreath silty clay loam, 0 to 2 percent slopes	9.4	24.6%		I	83	197	54
992	Gillett Grove silty clay loam, depressional, 0 to 1 percent slopes	7.7	20.1%		IIIw	58	163	37
Weighted Average						75.3	186.5	50.1

Note: ALL soils information on this page is dated 1/21/2012

*CSR ratings will be available for a limited time to aid in the transition to CSR2.