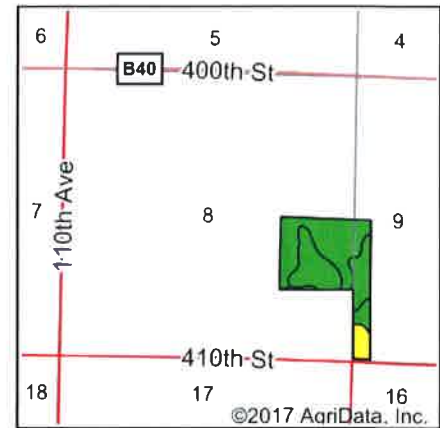


## Tract 1 Soils Map



Soils data provided by USDA and NRCS.



State: **Iowa**  
 County: **Clay**  
 Location: **9-95N-38W**  
 Township: **Clay**  
 Acres: **59.89**  
 Date: **12/26/2017**

**MIDWEST LAND**  
 & REAL ESTATE, INC.  
 712-262-3110 MANAGEMENT

Maps Provided By:  
**surety**  
 CUSTOMIZED ONLINE MAPPING  
 © AgriData, Inc. 2017 www.AgrIDataInc.com



Area Symbol: IA041, Soil Area Version: 27

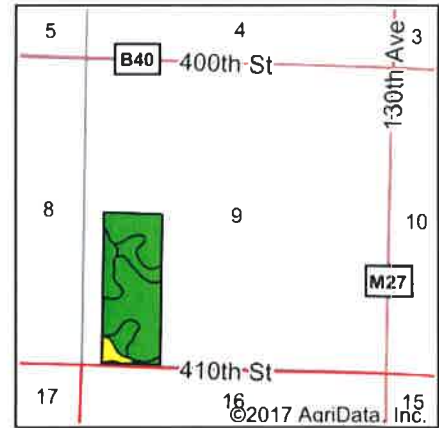
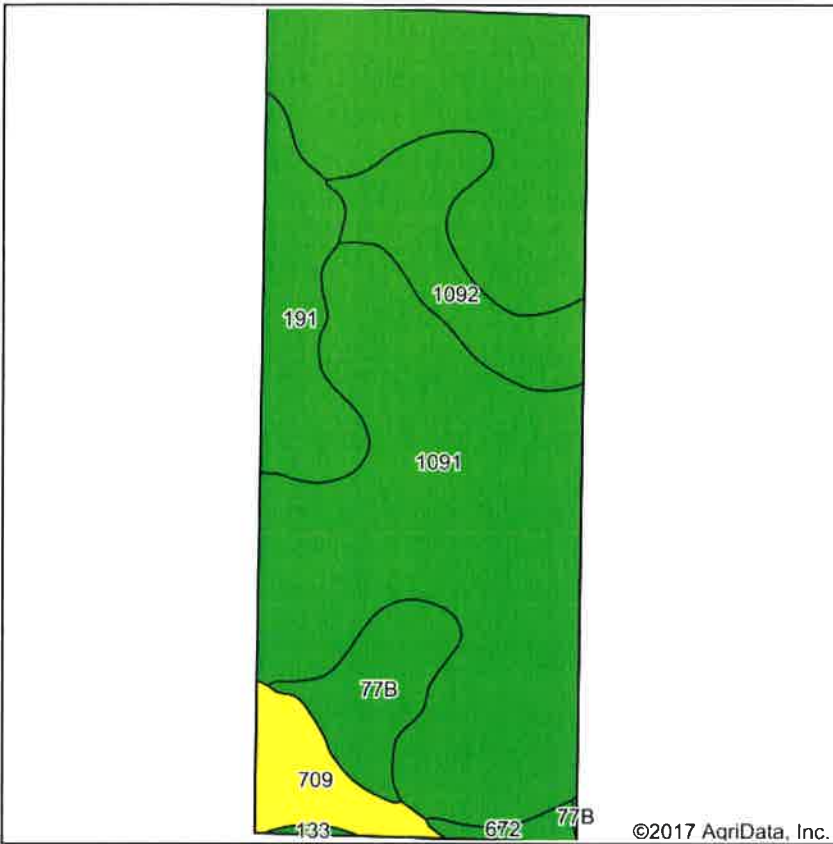
Code	Soil Description	Acres	Percent of field	CSR2 Legend	Non-Irr Class *c	CSR2**	CSR
1091	McCreath silty clay loam, 0 to 2 percent slopes	32.25	53.8%		Iw	98	83
77B	Sac silty clay loam, loam substratum, 2 to 5 percent slopes	13.96	23.3%		Ile	95	71
191	Rushmore silty clay loam, 0 to 2 percent slopes	8.53	14.2%		Ilw	95	76
709	Fairhaven silt loam, 32 to 40 inches to sand and gravel, 0 to 2 percent slopes	4.45	7.4%		Is	61	63
133	Colo silty clay loam, deep loess, 0 to 2 percent slopes, occasionally flooded	0.70	1.2%		Ilw	78	73
Weighted Average						93.9	77.6

\*\*IA has updated the CSR values for each county to CSR2.

\*c: Using Capabilities Class Dominant Condition Aggregation Method

Soils data provided by USDA and NRCS.

## Tract 2 Soils Map



State: **Iowa**  
 County: **Clay**  
 Location: **9-95N-38W**  
 Township: **Clay**  
 Acres: **59.32**  
 Date: **12/26/2017**

712-262-3110  
**MIDWEST LAND**  
 MANAGEMENT

Maps Provided By:



Area Symbol: IA041, Soil Area Version: 27

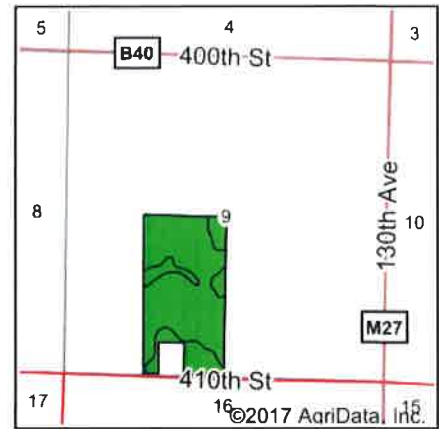
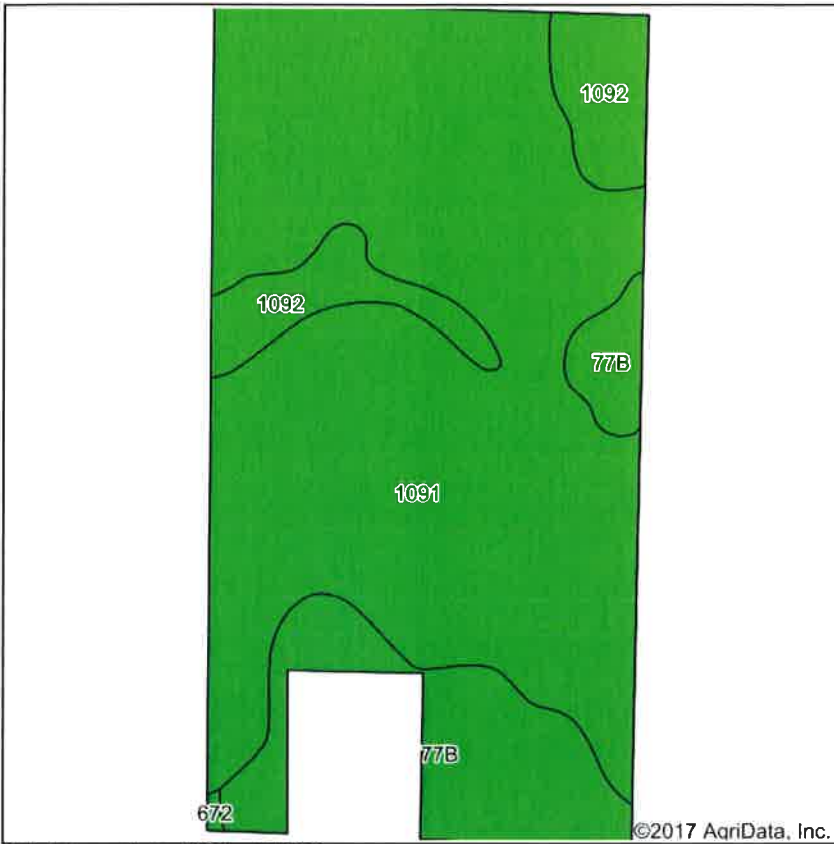
Code	Soil Description	Acres	Percent of field	CSR2 Legend	Non-Irr Class *c	Irr Class *c	CSR2**	CSR
1091	McCreath silty clay loam, 0 to 2 percent slopes	40.45	68.2%			Iw	98	83
1092	Gillett Grove silty clay loam, 0 to 2 percent slopes	5.62	9.5%			IIw	94	78
191	Rushmore silty clay loam, 0 to 2 percent slopes	5.58	9.4%			IIw	95	76
77B	Sac silty clay loam, loam substratum, 2 to 5 percent slopes	3.87	6.5%			Ile	95	71
709	Fairhaven silt loam, 32 to 40 inches to sand and gravel, 0 to 2 percent slopes	3.03	5.1%			Is	61	63
672	May City sandy clay loam, 0 to 2 percent slopes	0.64	1.1%			IVs	74	38
133	Colo silty clay loam, deep loess, 0 to 2 percent slopes, occasionally flooded	0.13	0.2%			IIw	78	73
Weighted Average							95	79.6

\*\*IA has updated the CSR values for each county to CSR2.

\*c: Using Capabilities Class Dominant Condition Aggregation Method

Soils data provided by USDA and NRCS.

## Tract 3 Soils Map



State: **Iowa**  
 County: **Clay**  
 Location: **9-95N-38W**  
 Township: **Clay**  
 Acres: **74.51**  
 Date: **12/26/2017**

Midwest Land & Real Estate, Inc.  
 712-262-3110 MANAGEMENT

Maps Provided By  
**surety**  
 CUSTOMIZED ONLINE MAPPING  
 © AgriData, Inc. 2017 www.AgrDataInc.com



Area Symbol: IA041, Soil Area Version: 27

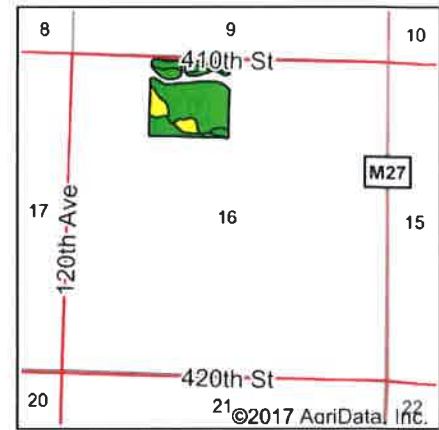
Code	Soil Description	Acres	Percent of field	CSR2 Legend	Non-Irr Class *c	Irr Class *c	CSR2**	CSR
1091	McCreath silty clay loam, 0 to 2 percent slopes	56.24	75.5%		Iw		98	83
77B	Sac silty clay loam, loam substratum, 2 to 5 percent slopes	11.32	15.2%		Ile		95	71
1092	Gillett Grove silty clay loam, 0 to 2 percent slopes	6.83	9.2%		Ilw		94	78
672	May City sandy clay loam, 0 to 2 percent slopes	0.12	0.2%		IVs	IIIs	74	38
<b>Weighted Average</b>							<b>97.1</b>	<b>80.6</b>

\*\*IA has updated the CSR values for each county to CSR2.

\*c: Using Capabilities Class Dominant Condition Aggregation Method

Soils data provided by USDA and NRCS.

## Tract 4 Soils Map



State: **Iowa**  
 County: **Clay**  
 Location: **16-95N-38W**  
 Township: **Clay**  
 Acres: **33.9**  
 Date: **12/26/2017**

**MIDWEST LAND**  
 & REAL ESTATE, INC.  
 712-262-3110 MANAGEMENT

Maps Provided By:



Area Symbol: IA041, Soil Area Version: 27

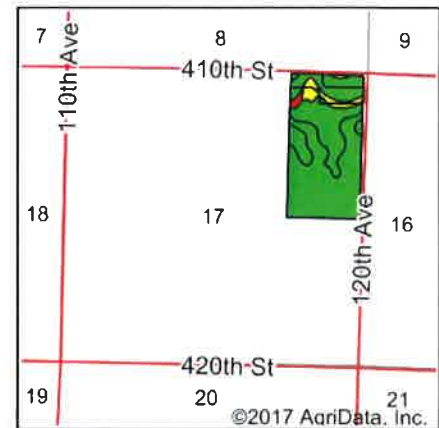
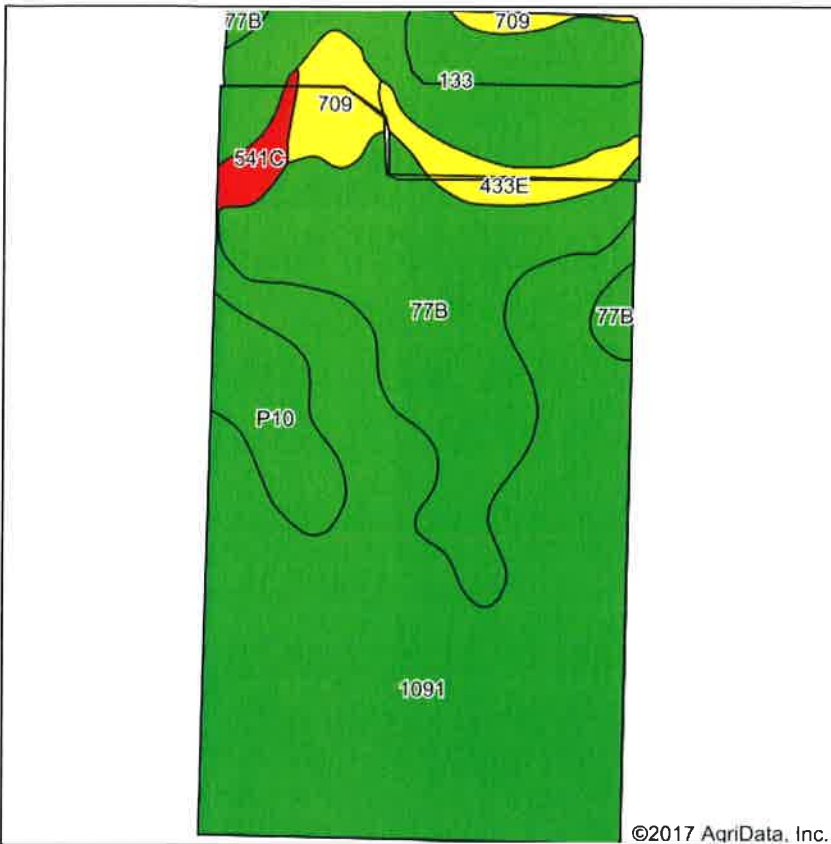
Code	Soil Description	Acres	Percent of field	CSR2 Legend	Non-Irr Class *c	Irr Class *c	CSR2**	CSR
133	Colo silty clay loam, deep loess, 0 to 2 percent slopes, occasionally flooded	20.38	60.1%			IIw	78	73
709	Fairhaven silt loam, 32 to 40 inches to sand and gravel, 0 to 2 percent slopes	4.29	12.7%			Is	61	63
1092	Gillett Grove silty clay loam, 0 to 2 percent slopes	3.83	11.3%			IIw	94	78
672	May City sandy clay loam, 0 to 2 percent slopes	2.25	6.6%			IVs	74	38
577C2	Everly clay loam, 5 to 9 percent slopes, moderately eroded	1.95	5.8%			IIIe	83	51
77B	Sac silty clay loam, loam substratum, 2 to 5 percent slopes	1.20	3.5%			Ile	95	71
Weighted Average							78.3	68.6

\*\*IA has updated the CSR values for each county to CSR2.

\*c: Using Capabilities Class Dominant Condition Aggregation Method

Soils data provided by USDA and NRCS.

## Tract 5 Soils Map



State: **Iowa**  
 County: **Clay**  
 Location: **17-95N-38W**  
 Township: **Clay**  
 Acres: **77.91**  
 Date: **12/26/2017**

712-262-3110  
**MIDWEST LAND**  
 MANAGEMENT

Maps Provided By:  
  
 CUSTOMIZED ONLINE MAPPING  
 © AgriData, Inc. 2017 www.AgrDataInc.com



Area Symbol: IA041, Soil Area Version: 27

Code	Soil Description	Acres	Percent of field	CSR2 Legend	Non-Irr Class *c	CSR2**	CSR
1091	McCreath silty clay loam, 0 to 2 percent slopes	41.34	53.1%		lw	98	83
77B	Sac silty clay loam, loam substratum, 2 to 5 percent slopes	16.87	21.7%		lle	95	71
133	Colo silty clay loam, deep loess, 0 to 2 percent slopes, occasionally flooded	9.88	12.7%		llw	78	73
P10	Afton silty clay loam, Sheldon creek formation, 0 to 2 percent slopes, occasionally flooded	3.87	5.0%		llw	82	
709	Fairhaven silt loam, 32 to 40 inches to sand and gravel, 0 to 2 percent slopes	2.64	3.4%		ls	61	63
433E	Moneta loam, 14 to 18 percent slopes	2.27	2.9%		IVe	43	25
541C	Estherville-Hawick complex, 5 to 9 percent slopes	1.04	1.3%		llls	24	5
Weighted Average						90.2	*.

\*\*IA has updated the CSR values for each county to CSR2.

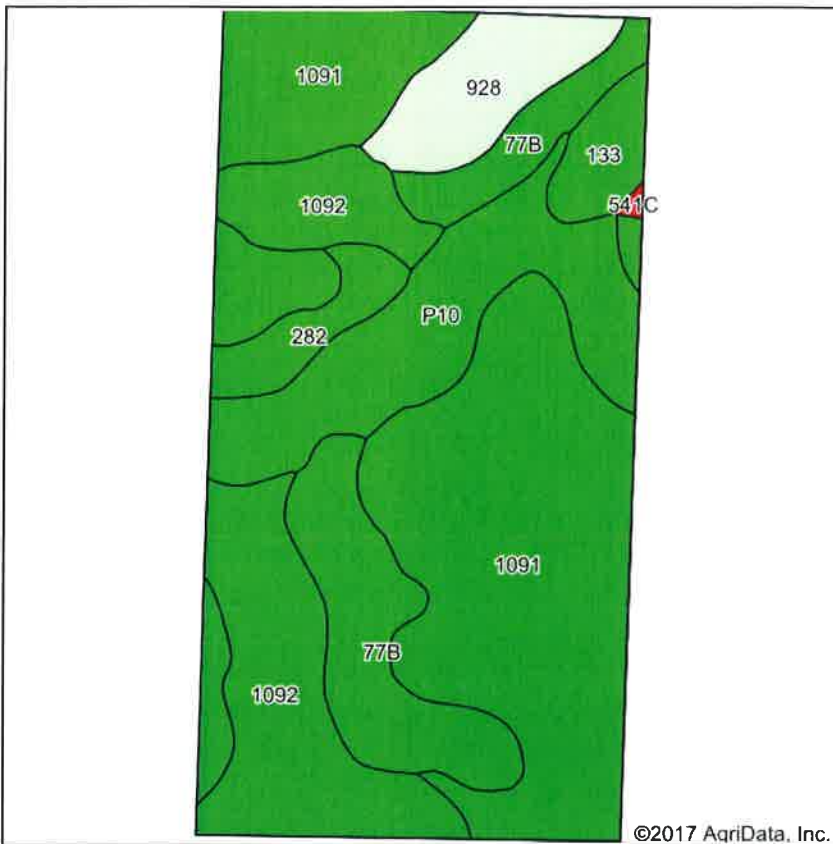
\*- CSR weighted average cannot be calculated on the current soils data, use prior data version for csr values.

\*c: Using Capabilities Class Dominant Condition Aggregation Method

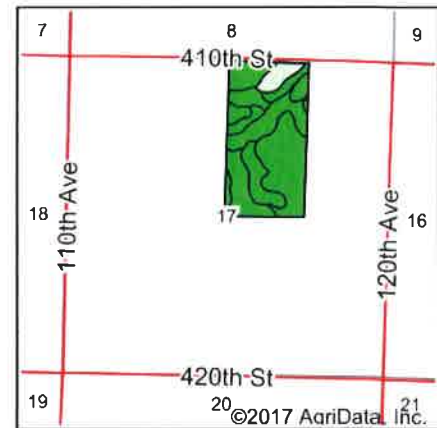
Soils data provided by USDA and NRCS.



## Tract 6 Soils Map



Soils data provided by USDA and NRCS.



State: **Iowa**  
 County: **Clay**  
 Location: **17-95N-38W**  
 Township: **Clay**  
 Acres: **78.96**  
 Date: **12/26/2017**

& REAL ESTATE, INC.  
**MIDWEST LAND**  
 712-262-3110 MANAGEMENT

Maps Provided By:  
  
 CUSTOMIZED ONLINE MAPPING  
 © AgriData, Inc. 2017 [www.AgriDataInc.com](http://www.AgriDataInc.com)



Area Symbol: IA041, Soil Area Version: 27

Code	Soil Description	Acres	Percent of field	CSR2 Legend	Non-Irr Class *c	CSR2**	CSR
1091	McCreath silty clay loam, 0 to 2 percent slopes	33.52	42.5%		Iw	98	83
1092	Gillett Grove silty clay loam, 0 to 2 percent slopes	13.93	17.6%		IIw	94	78
P10	Afton silty clay loam, Sheldon creek formation, 0 to 2 percent slopes, occasionally flooded	11.12	14.1%		IIw	82	
77B	Sac silty clay loam, loam substratum, 2 to 5 percent slopes	10.53	13.3%		Ile	95	71
928	Annieville silty clay loam, 0 to 2 percent slopes	4.87	6.2%		Ie	100	78
282	Ransom silty clay loam, 1 to 3 percent slopes	2.62	3.3%		Iw	95	81
133	Colo silty clay loam, deep loess, 0 to 2 percent slopes, occasionally flooded	2.25	2.8%		IIw	78	73
541C	Estherville-Hawick complex, 5 to 9 percent slopes	0.12	0.2%		IIIs	24	5
Weighted Average						94	*.

\*\*IA has updated the CSR values for each county to CSR2.

\*- CSR weighted average cannot be calculated on the current soils data, use prior data version for csr values.

\*c: Using Capabilities Class Dominant Condition Aggregation Method

Soils data provided by USDA and NRCS.