

# Aerial Map



**MIDWEST LAND**  
712-262-3110 MANAGEMENT

Maps provided by:



©AgriData, Inc. 2012  
www.AgriDataInc.com

**17-96N-38W**  
**Clay County**  
**Iowa**

map center: 43° 8' 4.65, 95° 21' 29.24

scale: 8741

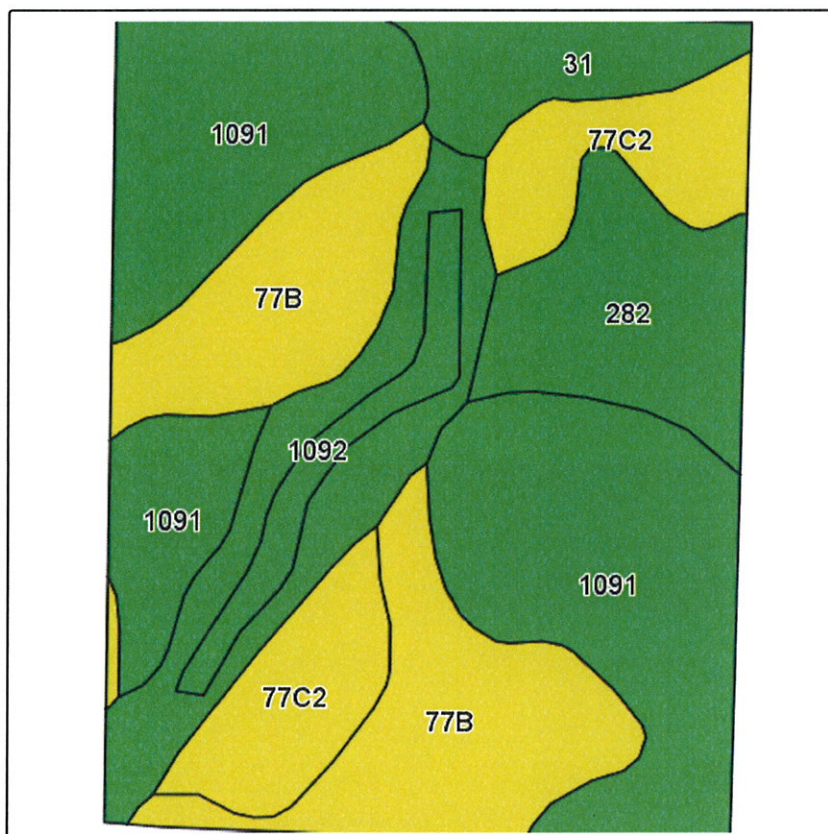


8/14/2012

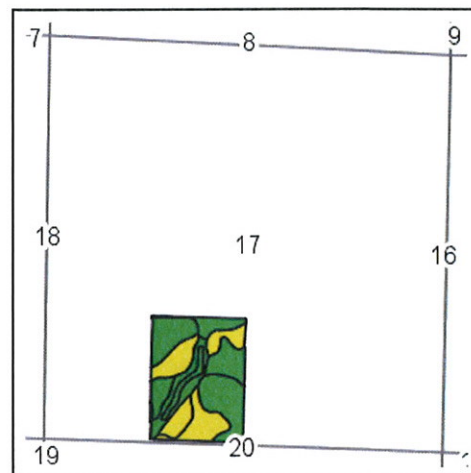
Field borders provided by Farm Service Agency as of 5/21/2008. Aerial photography provided by Aerial Photography Field Office.



## Soils Map



Field borders provided by Farm Service Agency as of 5/21/2008.  
Soils data provided by USDA and NRCS.



State: **Iowa**  
County: **Clay**  
Location: **17-96N-38W**  
Township: **Lone Tree**  
Acres: **45.8**  
Date: **8/24/2012**

**MIDWEST LAND** & REAL ESTATE, INC.  
712-262-3110 MANAGEMENT



Maps provided by:



©AgriData, Inc 2012  
www.AgriDataInc.com

Code	Soil Description	Acres	Percent of field	CSR Legend	Non-Irr Class	CSR* 1/21/12	CSR(2)**
1091	McCreath silty clay loam, 0 to 2 percent slopes	16.6	36.1%		I	83	84
77B	Sac silty clay loam, 2 to 5 percent slopes	9.8	21.4%		Ile	71	81
1092	Gillett Grove silty clay loam, 0 to 2 percent slopes	6.5	14.2%		IIlw	78	84
77C2	Sac silty clay loam, 5 to 9 percent slopes, moderately eroded	5.7	12.4%		IIIle	53	72
282	Ransom silty clay loam, 1 to 3 percent slopes	4.5	9.9%		I	81	82
31	Afton silty clay loam, 0 to 2 percent slopes	2.7	5.9%		IIlw	75	71
Weighted Average						75.2	80.8

\*CSR ratings as of 1/21/2012 will be available for a limited time to aid in the transition to CSR2.

\*\*These values could be either CSR or CSR2 as counties are updated during this transition.

For more information on the new CSR2 rating visit [http://www.ucs.iastate.edu/mnet/\\_repository/2012/soilmanagement/pdf/Burras.pdf](http://www.ucs.iastate.edu/mnet/_repository/2012/soilmanagement/pdf/Burras.pdf)