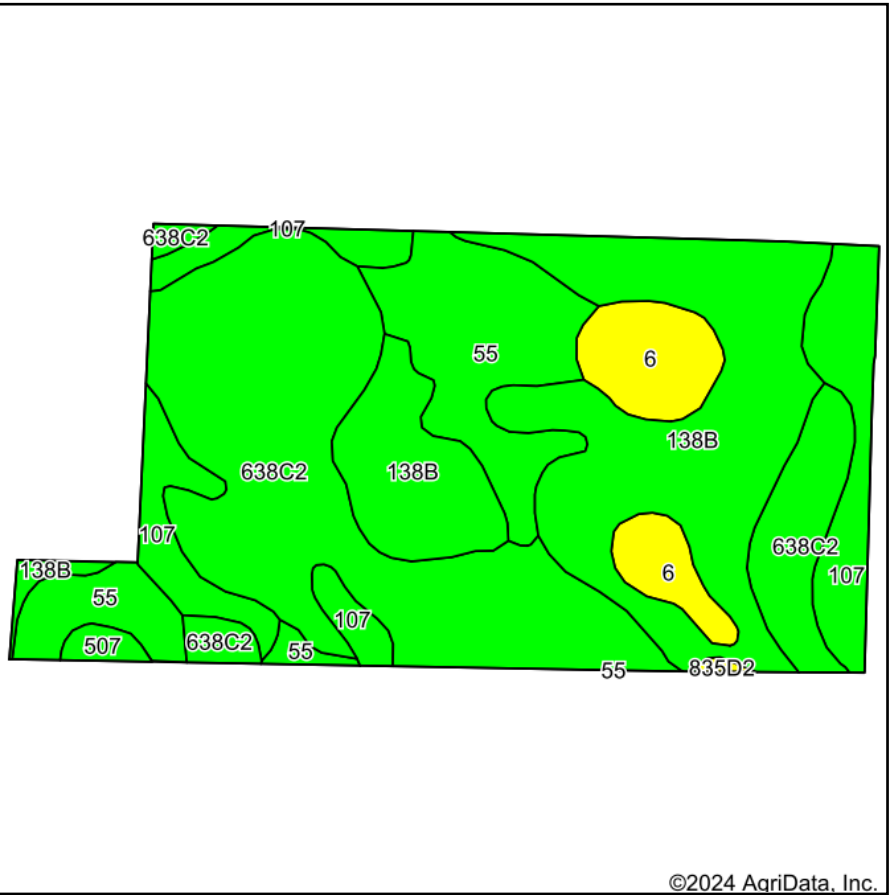
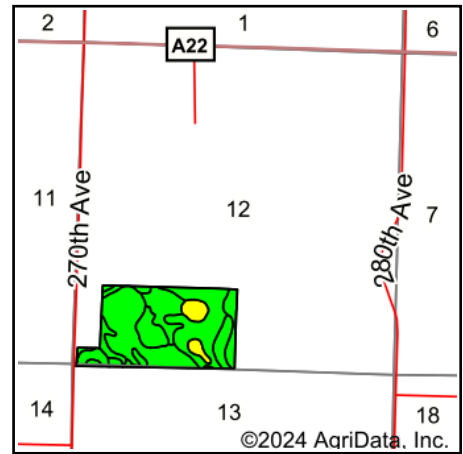


Soils Map



Soils data provided by USDA and NRCS.



State: **Iowa**
 County: **Dickinson**
 Location: **12-99N-36W**
 Township: **Center Grove**
 Acres: **70.17**
 Date: **11/5/2024**

MIDWEST LAND & REAL ESTATE, INC.
 712-262-3110 MANAGEMENT
 Maps Provided By: **surety**
 CUSTOMIZED ONLINE MAPPING
 © AgriData, Inc. 2023 www.AgriDataInc.com



Area Symbol: IA059, Soil Area Version: 33

Code	Soil Description	Acres	Percent of field	CSR2 Legend	Non-Irr Class *c	CSR2**	CSR
638C2	Clarion-Storden complex, 6 to 10 percent slopes, moderately eroded	24.90	35.5%		IIIe	75	52
138B	Clarion loam, 2 to 6 percent slopes	21.21	30.2%		Ile	89	73
55	Nicollet clay loam, 1 to 3 percent slopes	10.24	14.6%		Iw	89	73
107	Webster clay loam, 0 to 2 percent slopes	8.57	12.2%		IIw	86	70
6	Okoboji silty clay loam, 0 to 1 percent slopes	4.59	6.5%		IIIw	59	43
507	Canisteo clay loam, 0 to 2 percent slopes	0.54	0.8%		IIw	84	71
835D2	Omsrud-Storden complex, 10 to 16 percent slopes, moderately eroded	0.12	0.2%		IVe	53	35
Weighted Average					2.28	81.6	63.1

**IA has updated the CSR values for each county to CSR2.

*c: Using Capabilities Class Dominant Condition Aggregation Method

Soils data provided by USDA and NRCS.