

# Aerial Map



Midwest Land & Real Estate, Inc.  
712-262-3110 MANAGEMENT

Maps provided by:



©AgriData, Inc. 2012  
www.AgrIDataInc.com

21-93N-35W  
Buena Vista County  
Iowa

map center: 42° 51' 29.82, 94° 58' 57.92

scale: 8848

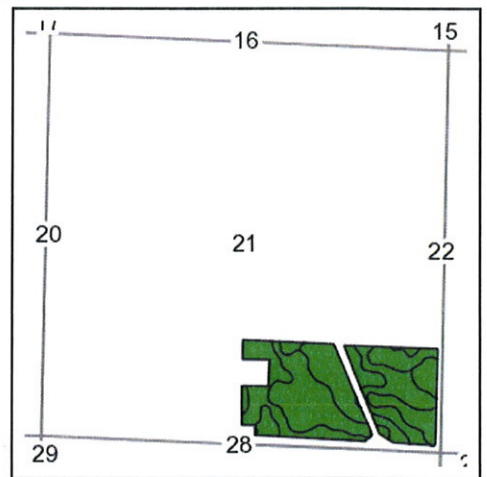
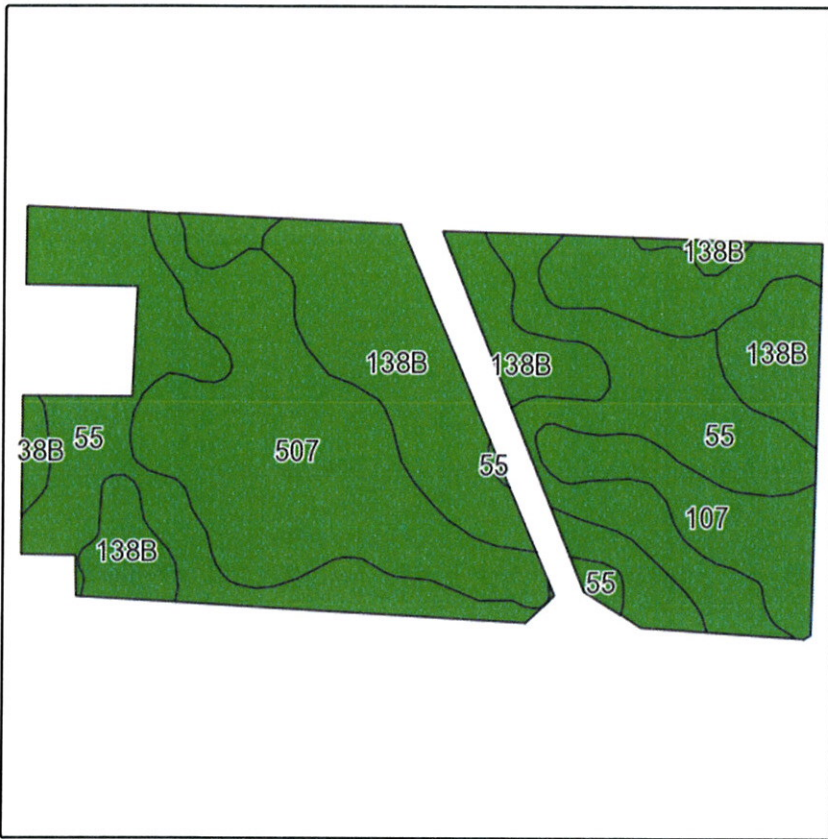


8/21/2013

Field borders provided by Farm Service Agency as of 5/21/2008. Aerial photography provided by Aerial Photography Field Office.



# Soils Map-CSR(as of 1/21/12)



State: **Iowa**  
 County: **Buena Vista**  
 Location: **21-93N-35W**  
 Township: **Poland**  
 Acres: **65.8**  
 Date: **8/21/2013**

**MIDWEST LAND** & REAL ESTATE, INC  
 712-262-3110 MANAGEMENT



Maps provided by:



Field borders provided by Farm Service Agency as of 5/21/2008.  
 Soils data provided by USDA and NRCS.

Code	Soil Description	Acres	Percent of field	CSR Legend	Non-Irr Class	CSR*	Corn	Soybeans
55	Nicollet loam, 1 to 3 percent slopes	22.2	33.9%		I	84	198	50
138B	Clarion loam, 2 to 5 percent slopes	18.8	28.5%		Ile	76	188	46
507	Canisteo silty clay loam, 0 to 2 percent slopes	15.8	24.0%		Ilw	74	185	44
107	Webster silty clay loam, 0 to 2 percent slopes	9	13.6%		Ilw	79	192	46
<b>Weighted Average</b>						<b>78.6</b>	<b>191.2</b>	<b>46.9</b>

Note: ALL soils information on this page is dated 1/21/2012  
 \*CSR ratings will be available for a limited time to aid in the transition to CSR2.