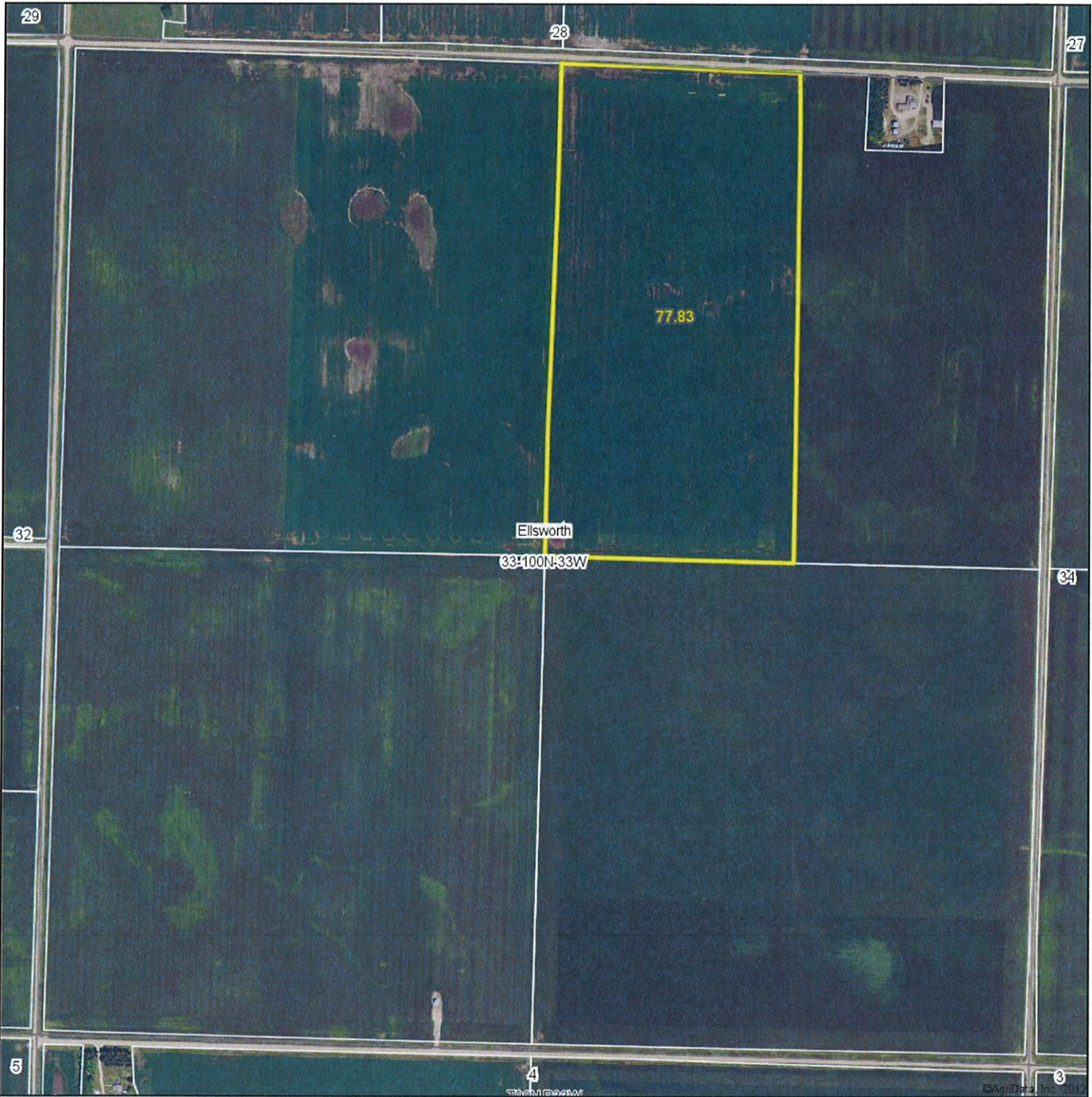


Aerial Map



MIDWEST LAND
712-262-3110 REAL ESTATE, INC. MANAGEMENT

Maps provided by:
surety
CUSTOMIZED ONLINE MAPPING

©AgriData, Inc. 2012
www.AgriDataInc.com

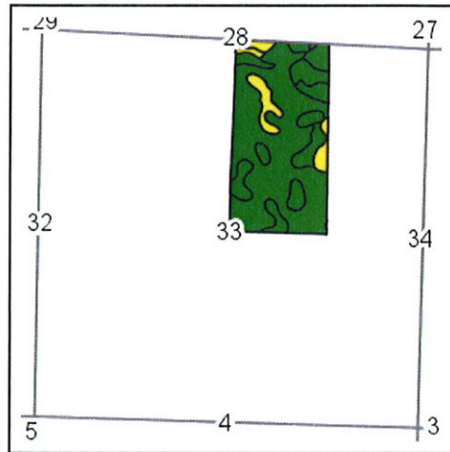
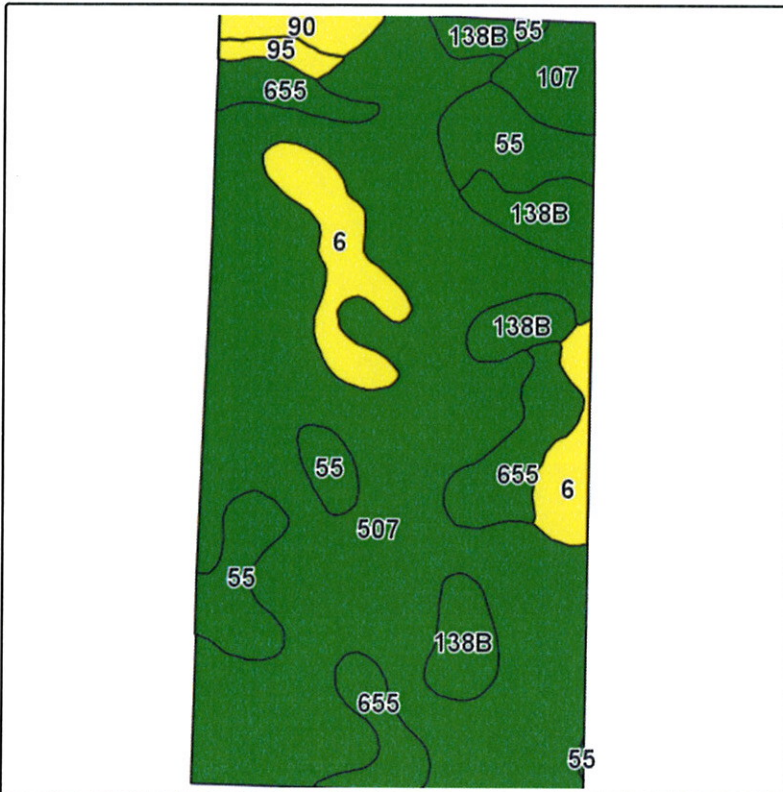
33-100N-33W
Emmet County
Iowa

map center: 43° 26' 16.59, 94° 44' 54.73
scale: 8747

8/27/2012

Field borders provided by Farm Service Agency as of 5/21/2008. Aerial photography provided by Aerial Photography Field Office.

Soils Map



State: **Iowa**
 County: **Emmet**
 Location: **33-100N-33W**
 Township: **Ellsworth**
 Acres: **77.8**
 Date: **8/27/2012**

MIDWEST LAND
 & REAL ESTATE, INC
 712-262-3110 MANAGEMENT

Field borders provided by Farm Service Agency as of 5/21/2008.
 Soils data provided by USDA and NRCS.



Maps provided by:



Code	Soil Description	Acres	Percent of field	CSR Legend	Non-Irr Class	CSR* 1/21/12	CSR(2)**
507	Canisteo clay loam, 0 to 2 percent slopes	49.1	63.2%		IIw	73	73
55	Nicollet loam, 1 to 3 percent slopes	6.6	8.5%		I	82	75
655	Crippin loam, 1 to 3 percent slopes	6.3	8.1%		I	77	76
138B	Clarion loam, 2 to 5 percent slopes	5.9	7.6%		Ile	74	69
6	Okoboji silty clay loam, 0 to 1 percent slopes	5.6	7.1%		IIIw	53	41
107	Webster silty clay loam, 0 to 2 percent slopes	2.2	2.8%		IIw	77	74
90	Okoboji mucky silt loam, 0 to 1 percent slopes	1.4	1.8%		IIIw	54	45
95	Harp clay loam, 1 to 3 percent slopes	0.7	0.9%		IIw	57	54
Weighted Average						72.4	70.2

*CSR ratings as of 1/21/2012 will be available for a limited time to aid in the transition to CSR2.

**These values could be either CSR or CSR2 as counties are updated during this transition.

For more information on the new CSR2 rating visit http://www.uca.iastate.edu/mnet/_repository/2012/soilmanagement/pdf/Burras.pdf