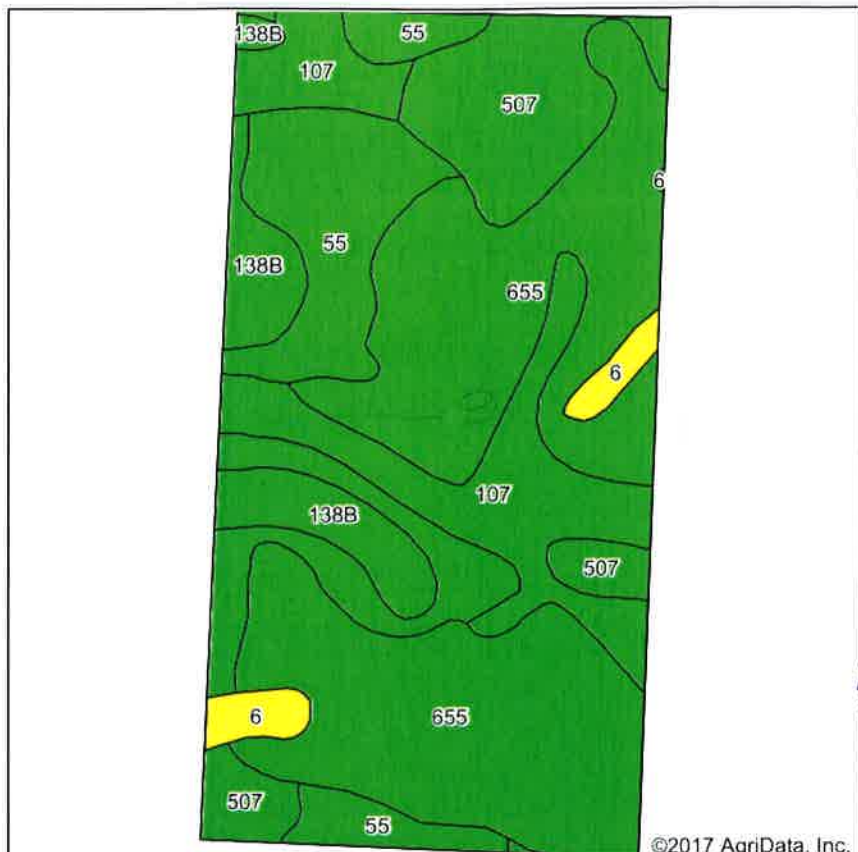
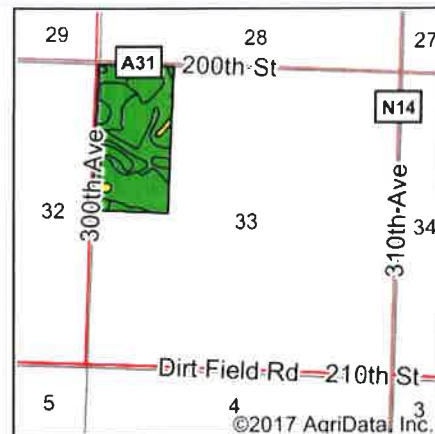


Soils Map



Soils data provided by USDA and NRCS.

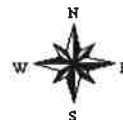


State: **Iowa**
 County: **Dickinson**
 Location: **33-99N-35W**
 Township: **Richland**
 Acres: **76.48**
 Date: **11/16/2017**

& REAL ESTATE, INC.
MIDWEST LAND
 712-262-3110 MANAGEMENT

Maps Provided By

surety
 CUSTOMIZED ONLINE MAPPING
 © AgriData, Inc. 2017 www.AgrDataInc.com



Area Symbol: IA059, Soil Area Version: 26

Code	Soil Description	Acres	Percent of field	CSR2 Legend	Non-Irr Class *c	CSR2**	CSR
655	Crippin loam, 1 to 3 percent slopes	33.18	43.4%		Ie	91	71
55	Nicollet clay loam, 1 to 3 percent slopes	15.19	19.9%		Iw	89	73
107	Webster clay loam, 0 to 2 percent slopes	11.46	15.0%		IIw	86	70
507	Canisteo clay loam, 0 to 2 percent slopes	9.29	12.1%		IIw	84	71
138B	Clarion loam, 2 to 6 percent slopes	5.46	7.1%		Ile	89	73
6	Okoboji silty clay loam, 0 to 1 percent slopes	1.90	2.5%		IIIw	59	43
Weighted Average						88.1	70.7

**IA has updated the CSR values for each county to CSR2.

*c: Using Capabilities Class Dominant Condition Aggregation Method