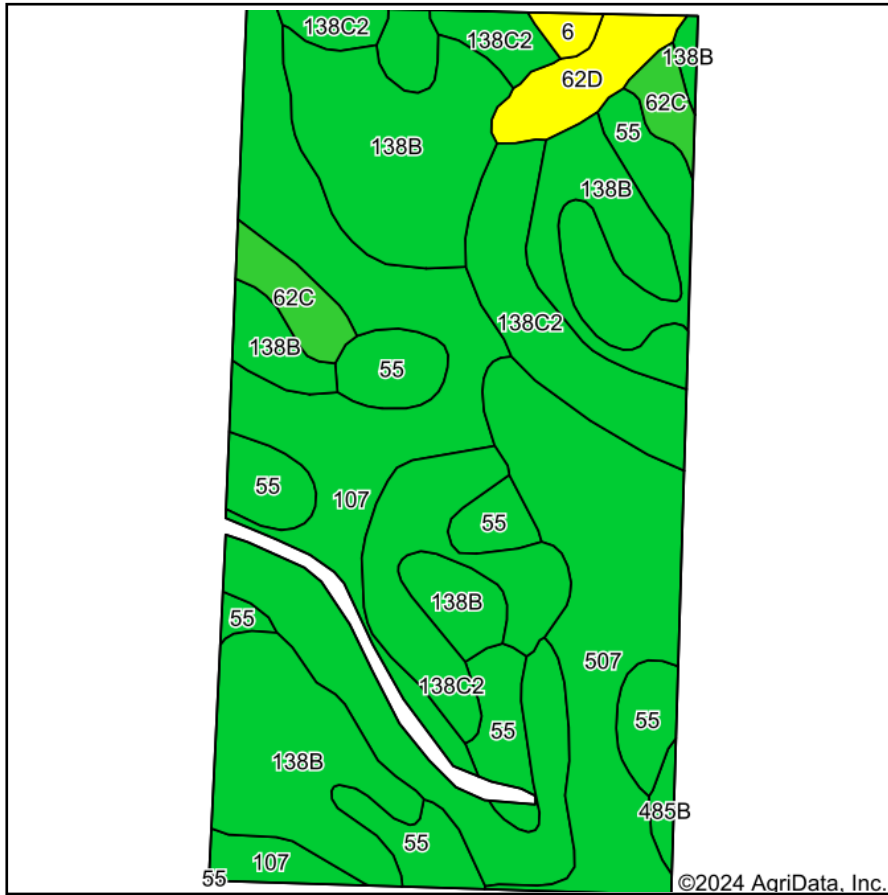
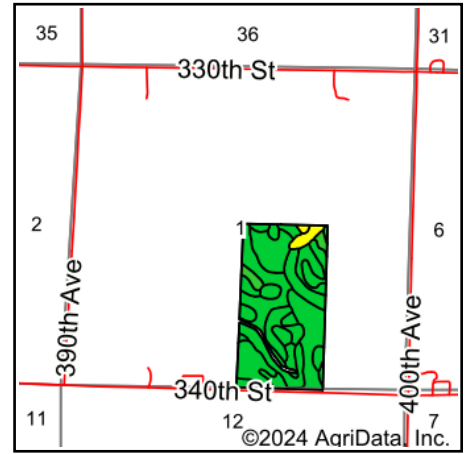


# Soils Map



Soils data provided by USDA and NRCS.



State: **Iowa**  
 County: **Palo Alto**  
 Location: **1-96N-34W**  
 Township: **Highland**  
 Acres: **78.09**  
 Date: **9/13/2024**

& REAL ESTATE, INC  
**MIDWEST LAND**  
 712-262-3110 MANAGEMENT  
 Maps Provided By:  
  
 CUSTOMIZED ONLINE MAPPING  
 © AgriData, Inc. 2023 www.AgriDataInc.com



Area Symbol: IA147, Soil Area Version: 30

Code	Soil Description	Acres	Percent of field	CSR2 Legend	Non-Irr Class *c	CSR2**	CSR
138B	Clarion loam, 2 to 6 percent slopes	19.88	25.3%		Ile	89	76
107	Webster clay loam, 0 to 2 percent slopes	19.03	24.4%		IIw	86	79
138C2	Clarion loam, 6 to 10 percent slopes, moderately eroded	11.61	14.9%		IIIe	83	58
55	Nicollet clay loam, 1 to 3 percent slopes	11.58	14.8%		Iw	89	84
507	Canisteo clay loam, 0 to 2 percent slopes	10.56	13.5%		IIw	84	74
62C	Storden loam, 6 to 10 percent slopes, moderately eroded	2.31	3.0%		IIIe	64	48
62D	Storden loam, 10 to 16 percent slopes, moderately eroded	2.25	2.9%		IVe	41	39
6	Okoboji silty clay loam, 0 to 1 percent slopes	0.44	0.6%		IIIw	59	54
485B	Spillville loam, 2 to 5 percent slopes	0.43	0.6%		Ile	88	76
Weighted Average					2.09	84.4	73

\*\*IA has updated the CSR values for each county to CSR2.

\*c: Using Capabilities Class Dominant Condition Aggregation Method

Soils data provided by USDA and NRCS.