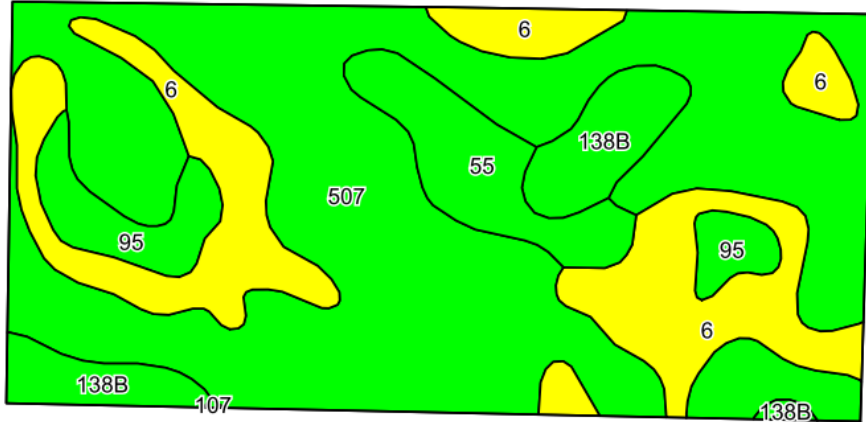
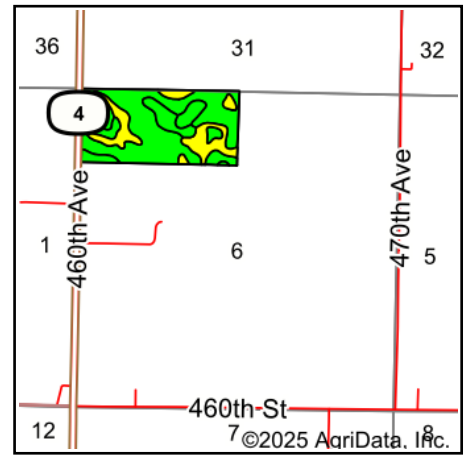


Soils Map



©2025 AgriData, Inc.

Soils data provided by USDA and NRCS.



State: **Iowa**
 County: **Palo Alto**
 Location: **6-94N-32W**
 Township: **Ellington**
 Acres: **70**
 Date: **4/21/2025**

MIDWEST LAND & REAL ESTATE, INC.
 712-262-3110 MANAGEMENT

Maps Provided By:
surety
 CUSTOMIZED ONLINE MAPPING
 © AgriData, Inc. 2023 www.AgriDataInc.com



Area Symbol: IA147, Soil Area Version: 31

| Code | Soil Description | Acres | Percent of field | CSR2 Legend | Non-Irr Class *c | CSR2** | CSR |
|------------------|--|-------|------------------|-------------|------------------|--------|------|
| 507 | Canisteo clay loam, 0 to 2 percent slopes | 42.00 | 60.0% | | IIw | 84 | 74 |
| 6 | Okoboji silty clay loam, 0 to 1 percent slopes | 15.12 | 21.6% | | IIIw | 59 | 54 |
| 138B | Clarion loam, 2 to 6 percent slopes | 4.75 | 6.8% | | Ile | 89 | 76 |
| 55 | Nicollet clay loam, 1 to 3 percent slopes | 4.49 | 6.4% | | Iw | 89 | 84 |
| 95 | Harps clay loam, 0 to 2 percent slopes | 3.64 | 5.2% | | IIw | 72 | 59 |
| Weighted Average | | | | | 2.15 | 78.6 | 69.7 |

**IA has updated the CSR values for each county to CSR2.

*c: Using Capabilities Class Dominant Condition Aggregation Method