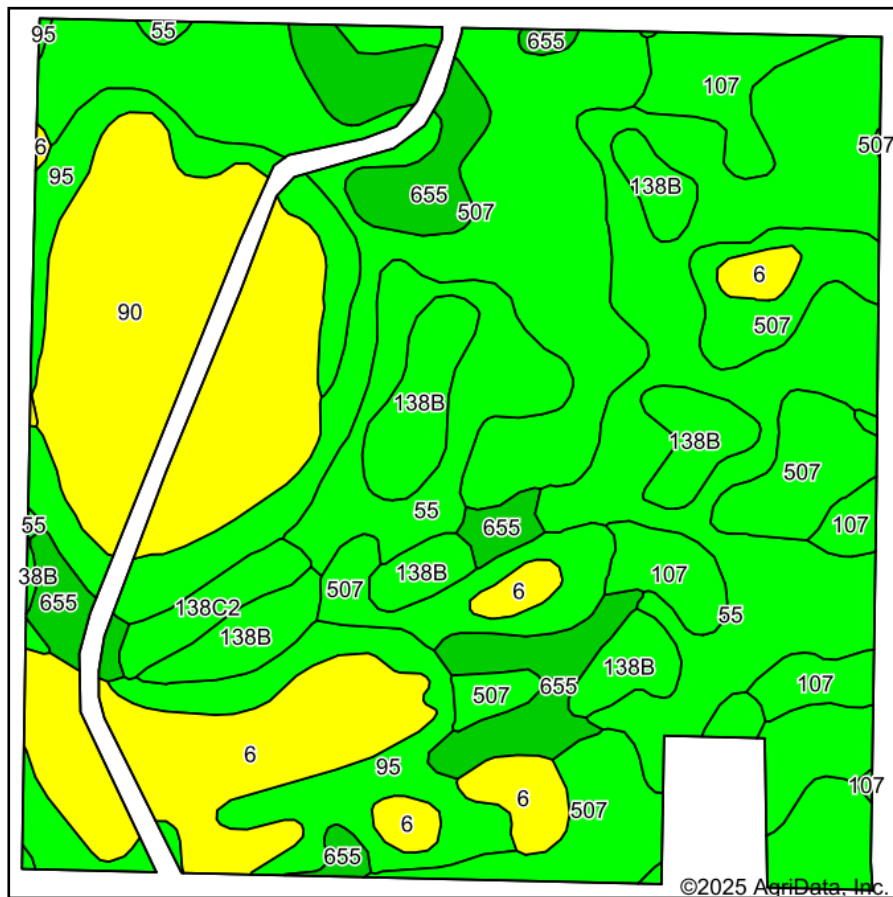
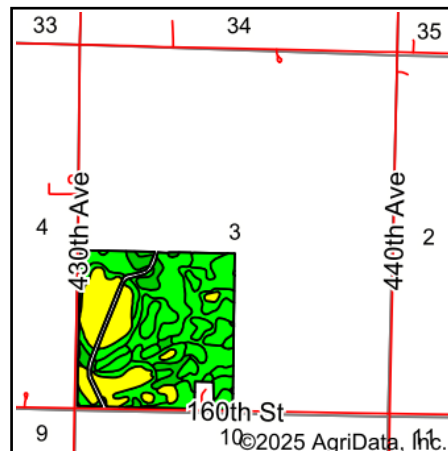


Soils Map



Soils data provided by USDA and NRCS.



State: **Iowa**
 County: **Emmet**
 Location: **3-99N-33W**
 Township: **Center**
 Acres: **147.17**
 Date: **5/9/2025**

& REAL ESTATE, INC
MIDWEST LAND
 712-262-3110 MANAGEMENT
 Maps Provided By:

 CUSTOMIZED ONLINE MAPPING
 © AgriData, Inc. 2023 www.AgriDataInc.com



Area Symbol: IA063, Soil Area Version: 34

Code	Soil Description	Acres	Percent of field	CSR2 Legend	Non-Irr Class *c	CSR2**	CSR
507	Canisteo clay loam, 0 to 2 percent slopes	41.54	28.1%		IIw	84	73
55	Nicollet clay loam, 1 to 3 percent slopes	30.74	20.9%		Iw	89	82
90	Okoboji mucky silt loam, 0 to 1 percent slopes	19.17	13.0%		IIIw	55	54
6	Okoboji silty clay loam, 0 to 1 percent slopes	13.93	9.5%		IIIw	59	53
95	Harps clay loam, 0 to 2 percent slopes	12.15	8.3%		IIw	72	57
655	Crippin loam, 1 to 3 percent slopes	10.72	7.3%		Ie	91	77
138B	Clarion loam, 2 to 6 percent slopes	10.22	6.9%		Ile	89	74
107	Webster clay loam, 0 to 2 percent slopes	6.85	4.7%		IIw	86	77
138C2	Clarion loam, 6 to 10 percent slopes, moderately eroded	1.85	1.3%		IIIe	83	59
Weighted Average					1.96	78.8	69.6

**IA has updated the CSR values for each county to CSR2.

*c: Using Capabilities Class Dominant Condition Aggregation Method