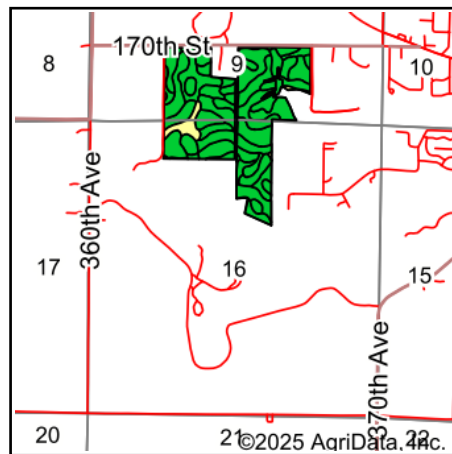
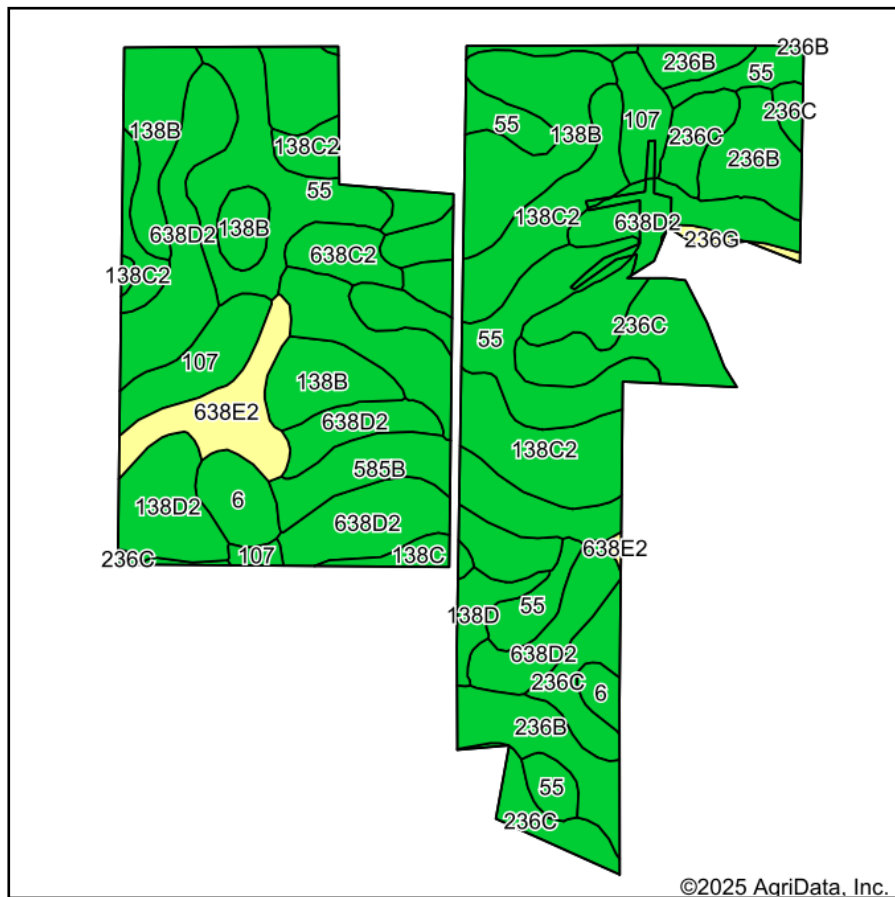


Soils Map



State: **Iowa**
 County: **Emmet**
 Location: **16-99N-34W**
 Township: **Estherville**
 Acres: **111.81**
 Date: **10/24/2025**

MIDWEST LAND & REAL ESTATE, INC.
 712-262-3110 MANAGEMENT
 Maps Provided By: **surety**
 CUSTOMIZED ONLINE MAPPING
 © AgriData, Inc. 2023 www.AgriDataInc.com

Area Symbol: IA063, Soil Area Version: 35

Code	Soil Description	Acres	Percent of field	CSR2 Legend	Non-Irr Class *c	CSR2**	CSR
638D2	Omsrud-Storden complex, 10 to 16 percent slopes, moderately eroded	19.98	18.0%		IVe	53	44
55	Nicollet clay loam, 1 to 3 percent slopes	17.61	15.7%		Iw	89	82
138B	Clarion loam, 2 to 6 percent slopes	15.98	14.3%		IIe	89	74
138C2	Clarion loam, 6 to 10 percent slopes, moderately eroded	15.59	13.9%		IIIe	83	59
236C	Lester loam, 6 to 10 percent slopes	10.28	9.2%		IIIe	80	56
236B	Lester loam, 2 to 6 percent slopes	7.44	6.7%		IIe	85	70
585B	Coland-Spillville complex, 2 to 5 percent slopes	5.29	4.7%		IIw	77	60
107	Webster clay loam, 0 to 2 percent slopes	5.17	4.6%		IIw	86	77
638E2	Omsrud-Storden complex, 10 to 22 percent slopes, moderately eroded	3.82	3.4%		IVe	36	34
138D2	Clarion loam, 9 to 14 percent slopes, moderately eroded	3.47	3.1%		IIIe	51	50
6	Okoboji silty clay loam, 0 to 1 percent slopes	2.69	2.4%		IIIw	59	53
638C2	Clarion-Storden complex, 6 to 10 percent slopes, moderately eroded	1.82	1.6%		IIIe	75	53
138D	Clarion loam, 9 to 14 percent slopes	1.42	1.3%		IIIe	59	52
138C	Clarion loam, 6 to 10 percent slopes	0.86	0.8%		IIIe	84	61
236G	Lester loam, 22 to 40 percent slopes	0.39	0.3%		VIIe	12	9
Weighted Average					2.61	75.3	61.8

**IA has updated the CSR values for each county to CSR2.

*c: Using Capabilities Class Dominant Condition Aggregation Method