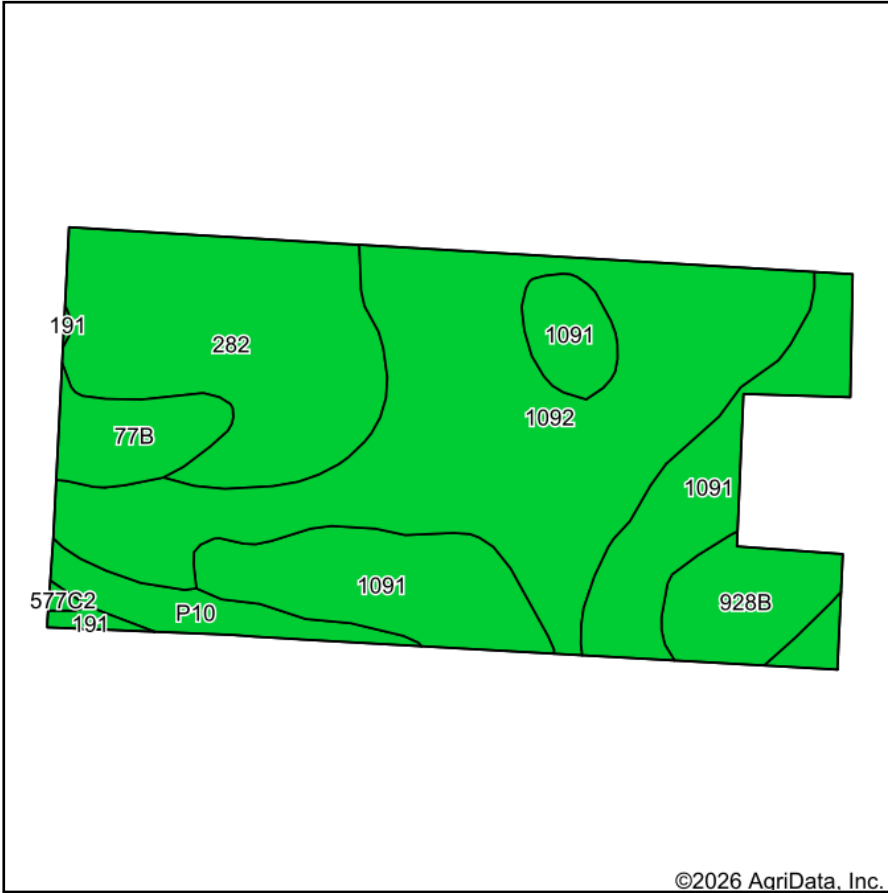
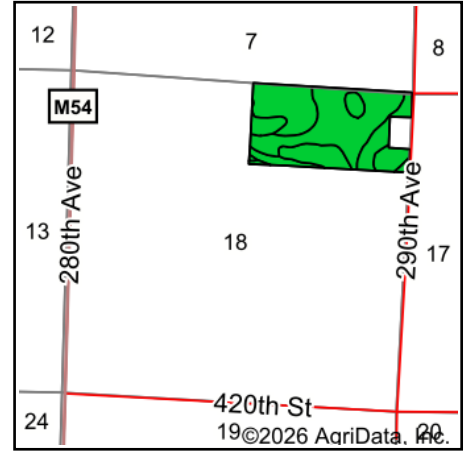


# Soils Map



Soils data provided by USDA and NRCS.



State: **Iowa**  
 County: **Clay**  
 Location: **18-95N-35W**  
 Township: **Logan**  
 Acres: **75.4**  
 Date: **2/19/2026**

**MIDWEST LAND** & REAL ESTATE, INC.  
 712-262-3110 MANAGEMENT

Maps Provided By:  
  
 CUSTOMIZED ONLINE MAPPING  
 © AgriData, Inc. 2025 www.AgriDataInc.com



Area Symbol: IA041, Soil Area Version: 35

Code	Soil Description	Acres	Percent of field	CSR2 Legend	Non-Irr Class *c	CSR2**	CSR	
1092	Gillett Grove silty clay loam, 0 to 2 percent slopes	30.70	40.7%		IIw	94	78	
1091	McCreath silty clay loam, 0 to 2 percent slopes	17.62	23.4%		Iw	98	83	
282	Ransom silty clay loam, 1 to 3 percent slopes	15.83	21.0%		Iw	95	81	
928B	Annieville silty clay loam, 2 to 5 percent slopes	4.33	5.7%		IIe	95	73	
77B	Sac silty clay loam, loam substratum, 2 to 5 percent slopes	3.37	4.5%		IIe	95	71	
P10	Afton silty clay loam, Sheldon creek formation, 0 to 2 percent slopes, occasionally flooded	2.95	3.9%		IIw	82		
191	Rushmore silty clay loam, 0 to 2 percent slopes	0.43	0.6%		IIw	95	76	
577C2	Everly clay loam, 5 to 9 percent slopes, moderately eroded	0.17	0.2%		IIIe	83	51	
<b>Weighted Average</b>						<b>1.56</b>	<b>94.8</b>	<b>*-</b>

\*\*IA has updated the CSR values for each county to CSR2.

\*- CSR weighted average cannot be calculated on the current soils data, use prior data version for csr values.

\*c: Using Capabilities Class Dominant Condition Aggregation Method